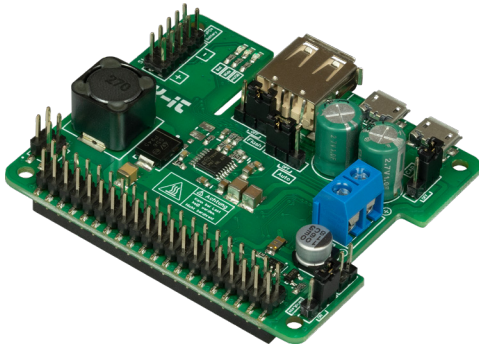


# STROMPI 3

UPS Power Solution



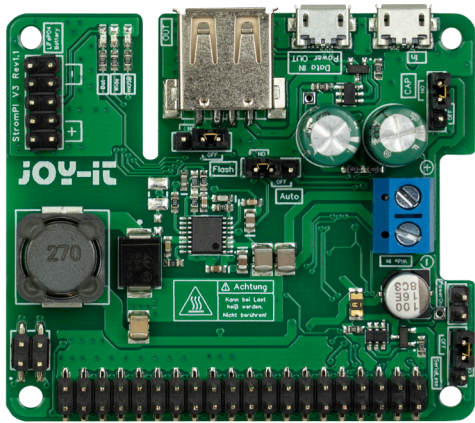
The latest addition to the "Strompi family" opens up completely new application possibilities for the Raspberry Pi.

In addition to the voltage inputs already available, the new StromPi 3 can now be supplemented with an optional, plug-in battery unit, which expands your Raspberry Pi with a LiFePO4 battery to include a rechargeable emergency power source.

Unforeseen power failures are now a thing of the past! The individual inputs can now be variably prioritised, which means that the StromPi 3 can be perfectly adapted to your project.

## MAIN FEATURES

Voltage input	Micro-USB, Wide-Range: 6V - 61V, StromPi Battery Hat (sold separately)
Voltage output	5V, 3A, RPI-PinHeader + USB
Compatible with	Raspberry Pi 4, 3B, 3B+, 3, 2B, B+, A+, Banana Pi Via USB output: many other single-board computers and Micro- controllers such as Arduino, pcDuino and many more
Microcontroller control	Programming option through prioritisation of the individual inputs in an emergency (power path)
Time-dependent functions	Programmable start & stop behaviour, Interval function, Weekend wake-up alarm, Minute wake-up alarm
Further functions	Data output & control via serial interface, Optional battery is char- ged during operation, Warning for failure of power supply, Detection of a restored- power supply, Serial-Less Mode, automatic shutdown when battery capacity is low, Energy saving mode



Optional extensions

Attachable battery pack  
(sold separately) with a  
1000 mAh or 2000 mAh  
LiFePO4 battery unit

Dimensions  
(expansion board)

55 x 64 x 20mm

Dimensions  
(optional battery unit)

66 x 57 x 20mm

Scope of delivery

StromPi 3 expansion  
board, screws, spacers

## FURTHER DETAILS

Item number

RB-StromPi3

EAN

4250236816609

Customs tariff number

8473302000

