



HEX
GS-911wifi
Diagnostic Tool for BMW Motorcycles

Thank you for buying a GS-911wifi.
Now let's register & configure it to get started!

Introduction



The GS-911wifi by HEX Microsystems is Windows PC based diagnostic tool for BMW motorcycles and is well suited to both owners and workshops. It communicates with the control units of your motorcycle and empowers you to do various maintenance and diagnostic tasks. It allows you to read and clear fault codes, see real-time sensor values, reset service reminders, do component function tests, calibrations and much more.

The GS-911wifi is the second generation of the GS-911 tool which uses wifi to connect to your phone, tablet or computer. Emergency and Cloud Functionality is supported on iOS, Android, Mac and other platforms.

Quick Start Guide



Illustration 1: The GS-911wifi

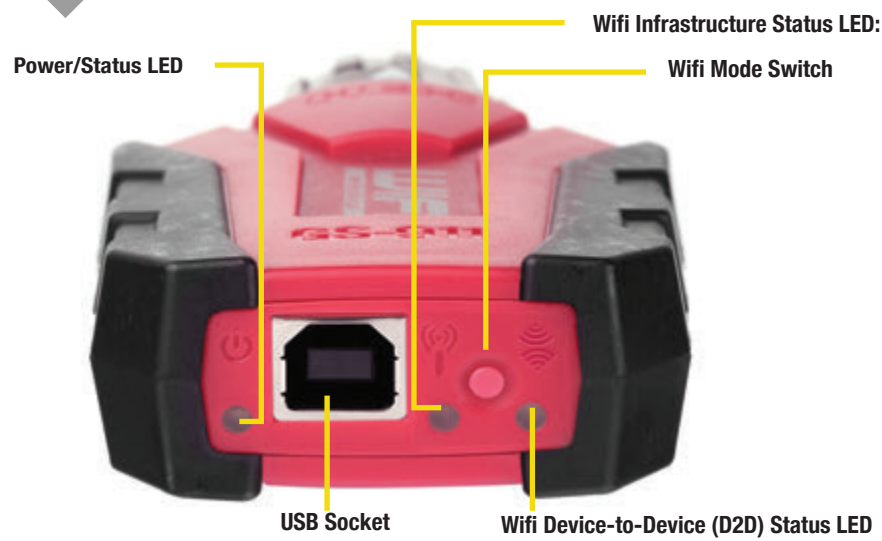


Illustration 2: The Flashing Lights

Power/Status LED

- Device is booting: 5 green LEDs
- Normal operation: 5 green LEDs
- Low power mode: 5 green LEDs
- Boot failure: 5 red LEDs

Wifi infrastructure status LED

- Scanning for wifi networks: 5 red LEDs
- Connecting to wifi network: 5 red LEDs
- Connected & waiting for IP: 5 green LEDs
- Successfully connected to Wifi: 5 green LEDs

Wifi Device-to-Device (D2D) status LED

- Device-to-Device mode activated: 1 red LED
- Device-to-Device mode ready: 1 green LED

Illustration 3: How do I plug it into my bike?

A: Make sure your interface is the correct side up with the white arrow visible on top & the connector ring twisted as far left as possible.

B: Align the receptacle (bike connector) correctly (with the red tab at the bottom), & insert.

C: After insertion, twist the connector ring as far right as possible, to lock it in place.

See our FAQ on www.hexcode.co.za to find the connector on your model.

1. Get our GS-911wifi PC/Mac Utility

Go to www.hexcode.co.za & proceed to the Downloads page. Download and install either the PC or Mac GS-911wifi Utility application. The PC & Mac utilities can register, download software updates and setup your wifi connection.



We also have GS-911wifi Launcher apps for iOS and Android on the App Store & Google Play. You can find the mobile apps by searching for "GS-911wifi" on the App Store & Google Play respectively.

Download it here:
www.hexcode.co.za/downloads

2. Register your GS-911wifi

The life of every GS-911wifi device starts with Registration. This activates your device, and links you to your GS-911wifi for support and warranty purposes. This step requires your PC or Mac to have Internet access.

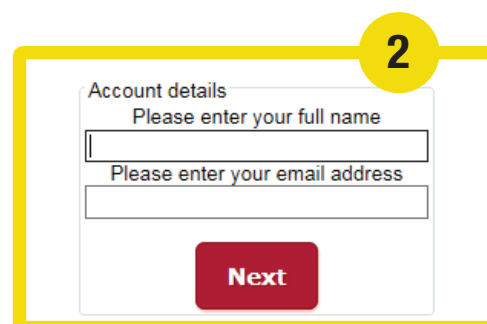
Step 1. After you have installed your PC or Mac GS-911wifi Utility, open this application. Now connect your GS-911wifi device to any open USB port on your PC or Mac. This will power your GS-911wifi device and the utility app should find it shortly, showing its Serial number. Now proceed to click the [Device registration] button.

Step 2. Submit your full name and email address. These details are required for support and warranty purposes. Please ensure you use a valid email address as a confirmation email will be sent to complete the registration process.

Step 3. Check your email inbox, once you receive your GS-911wifi Registration Email, click on the validation link in the body of the email.

Note: It may take several minutes to an hour to receive the validation email. This is out of our control and depends on your email server and Spam settings. If you still do not receive your validation email, please check your Spam folder and settings. Re-attempt the registration process and check that your email address is correct. If you still do not receive an email, please contact us at support@hexcode.co.za

See the screenshots below for easy reference.



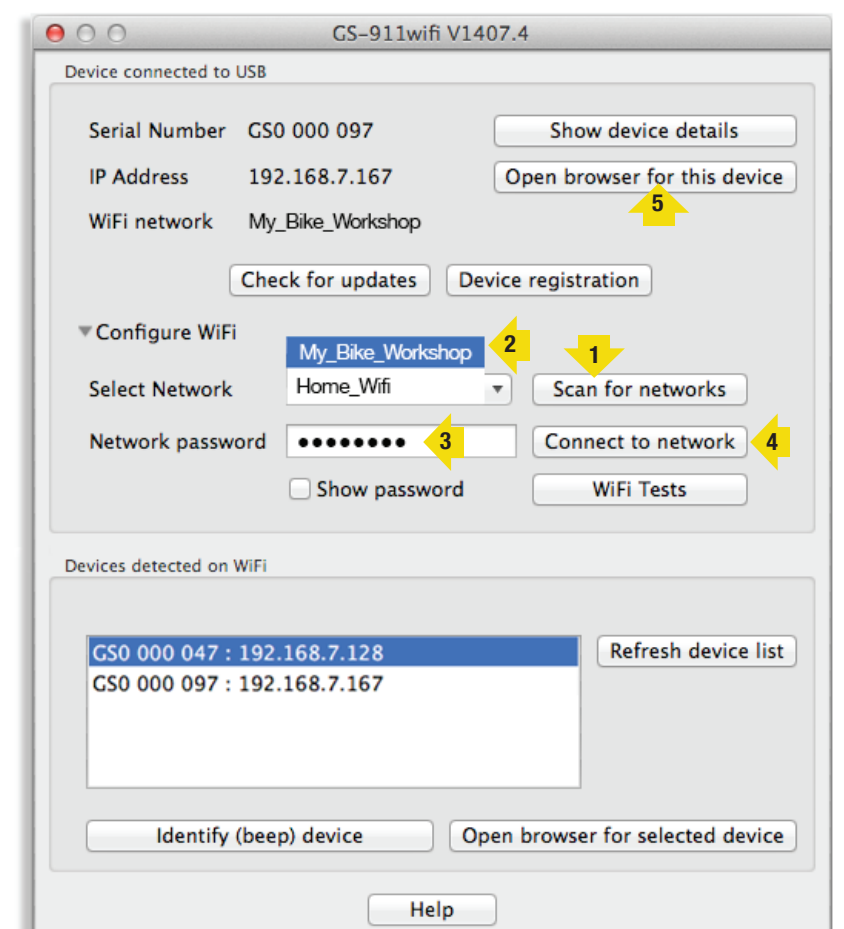
3. Configure your GS-911wifi

Make sure your GS-911wifi is connected to an open USB port on your PC or Mac. In the GS-911wifi Utility app, expand the Configure WIFI section.

Click on the [Scan for networks] button. It will list all the wifi networks that have been found in range of your GS-911wifi device. Select your network SSID and enter the WiFi network password and click the [Connect to network] button to join this network. The top section of your PC or Mac GS-911wifi Utility will show you what wifi network your GS-911wifi is connected to.

Note: The Devices detected on WIFI section, shown below, will show the Serial and IP numbers of all the GS-911wifi devices that are found on the network that your PC or Mac is connected too. Click the [Refresh device list] button to see an updated list.

See the screenshot below for easy reference.



Ready-to-Configure Checklist

To register, and to configure the wifi of your GS-911wifi device, ensure you have the following:

- ✓ GS-911wifi device, connected to your PC or Mac using the supplied USB cable.
- ✓ The GS-911wifi Utility application, downloaded, installed and running.
- ✓ Your Mac or PC is connected to the Internet.

NOTE: Android, iOS & Manual Registration

For advanced users: Your new GS-911wifi can also be set up and registered without a PC or Mac. This requires a basic understanding of networking. The detailed instructions are on www.hexcode.co.za, the basic steps are as follows:

1. Power the GS-911wifi device (USB or motorcycle connection)
2. Select D2D mode using the wifi mode button
3. Using your mobile device scan and connect to an open wifi network starting with "GS-911"
4. Using the Android or iOS Launcher apps, launch a browser to the device or open a browser and browse to 10.0.0.1
5. In the browser configure the GS-911wifi network settings and join a network that has Internet access
6. Switch your client device to the same network your GS-911wifi has joined
7. Again, using your iOS or Android Launcher apps open a browser to the device
8. Register your device!



4. Explore your GS-911wifi

- See www.hexcode.co.za for more product details
- Search for "GS-911wifi" on Google Play or App Store
- Join our forum at forum.hexcode.co.za/forum

Functionality Modes & Updates

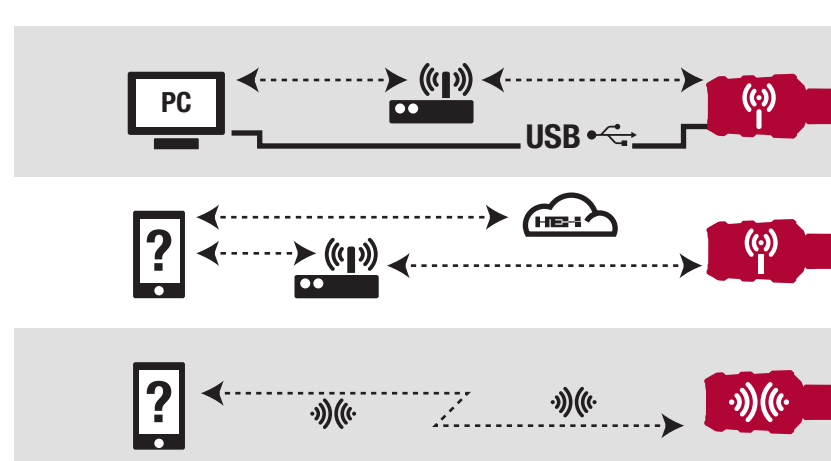
SERVICE FUNCTIONALITY includes the ability to reset Service Reminders, do output Function Tests, Calibrations, ABS Bleed Tests, Clear & Relearn Adaptations & much more. Available with the GS-911 Windows PC app.

CLOUD FUNCTIONALITY is introduced in a staged manner, aiming to provide the same Service Functionality that is found within the GS-911 Windows PC app, on any platform - MAC, LINUX, iOS & Android etc.

EMERGENCY FUNCTIONALITY is embedded in the GS-911wifi unit. It lets the user view ECU information, Read & Clear Fault Codes on ALL control units & view Real-time Live sensor data for ALL engine control units.

SOFTWARE UPDATES are done via the Internet & include regular functionality, new motorcycle models & the latest Fault Code database updates.

Functionality & Infrastructure



Service	Cloud	Emergency	Updates
Windows GS-911 PC app + wifi infrastructure or USB + Internet			
--			
Any device with browser + wifi infrastructure + Internet			
--	--		--
Any device with wifi & browser, i.e. phones & tablets			