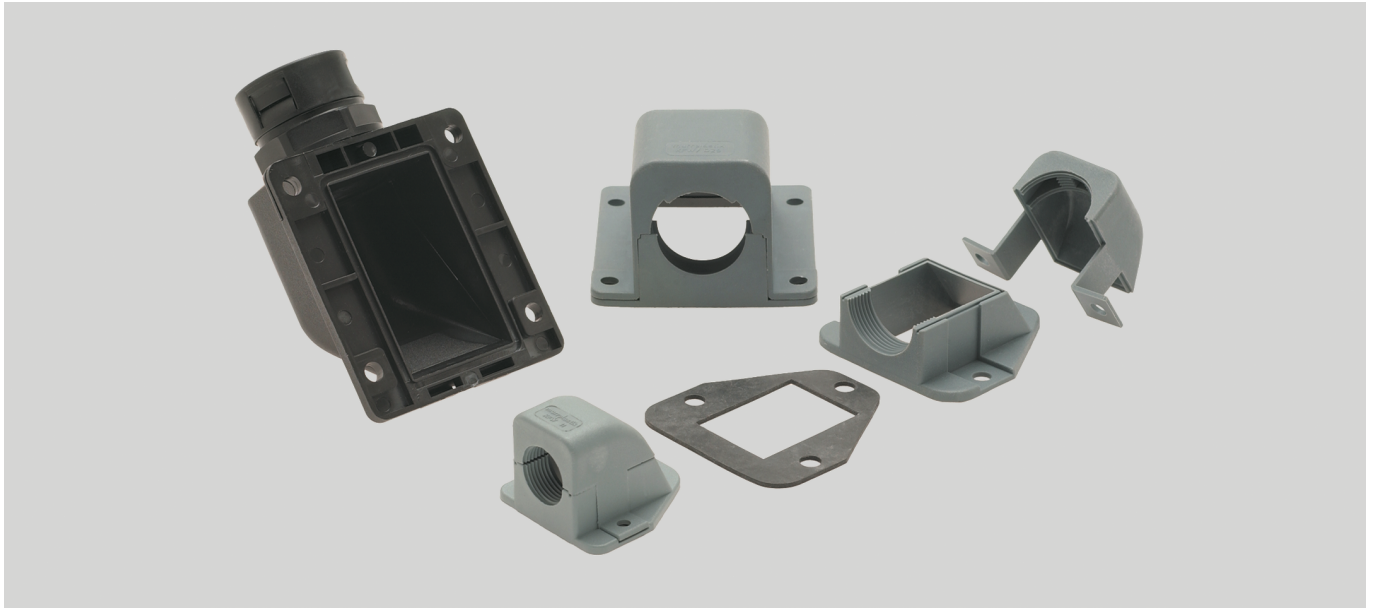


# HSSV-KF collapsible flange gland



## HSSV-KF folding flange

Opening flange angle for connection glands or cable glands.

- Flange angle opened to enable simple insertion of pre-assembled cables
- Simple assembly
- Highly stable

## Material

Polyamide PA 6

Flammability acc. to UL 94: VO

- halogen-free
- cadmium-free

## Properties

Resistant to a multitude of

- fuels
- mineral oils
- greases
- weak bases
- weak acids

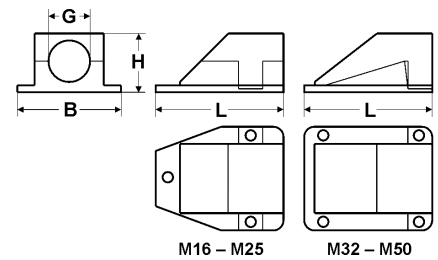
## Note

- UR-tested
- Threaded connection: metric to EN 60423

## Technical data

Protection class: IP 65

Temperature range: -40°C up to +110°C  
Temperature range temporary up to +140°C



## Dimensions

- G Thread size inside  
H Height  
B Width  
L Length

## metric thread - female

Part no. grey	Part no. black	Size metr. inside	Height mm	Width mm	Length mm	Unit	Net EUR/100 items at a purchase of		
							up to 100	101 - 500	501 - 1000
920507	920513	M16 x 1,5	35	47	49	10	o. r.	o. r.	o. r.
920508	920514	M20 x 1,5	35	47	49	10	o. r.	o. r.	o. r.
920509	920515	M25 x 1,5	44	65	69	10	o. r.	o. r.	o. r.
920510	920516	M32 x 1,5	55	78	90	10	o. r.	o. r.	o. r.
920511	920517	M40 x 1,5	66	94	99	10	o. r.	o. r.	o. r.
920512	920518	M50 x 1,5	76	101	116	10	o. r.	o. r.	o. r.

Dimensions and specifications may be changed without prior notice.

o. r. = on request