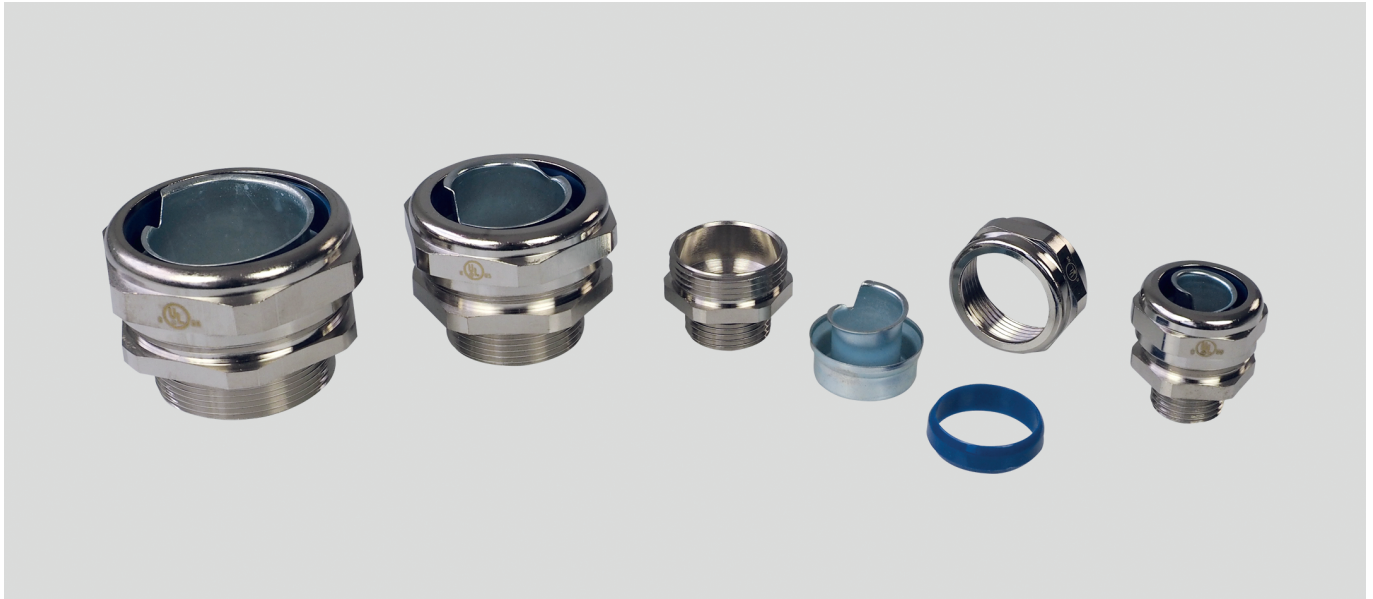


CV Compact conduit gland - straight



brass



Conduit gland CV Compact straight

Brass nickel-plated Conduit glabd.

Application

- Plant and machine construction
- Robot construction
- Automation technology
- Vehicle construction and shipbuilding
- Rail technology
- Installation technology
- Control cabinet construction

Material

Brass, nickel plated
Grounding sleeve: Steel
Seal: Polyamide

Technical data

Protection class: IP 67

Temperature range: -45°C up to +105°C

Note

Suitable for metallic protection tubes:
EF, HTDL, OR, HC, HCX, ZHLS, HFX

metric thread

Part no.	Size Metric	Suitable for tube ND	Suitable for tube outer Ø mm	Spanner size mm	Thread length mm	Unit	Net EUR/100 items at a purchase of		
							up to 100	101 - 500	501 - 1000
908473	M16 x 1,5	3/8	12,6	26,0	10,0	10	o. r.	o. r.	o. r.
908474	M20 x 1,5	3/8	12,6	26,0	10,0	10	o. r.	o. r.	o. r.
908475	M20 x 1,5	1/2	16,1	26,0	10,0	10	o. r.	o. r.	o. r.
908476	M25 x 1,5	3/4	21,1	35,0	10,0	5	o. r.	o. r.	o. r.
908477	M32 x 1,5	1	26,8	45,0	12,0	5	o. r.	o. r.	o. r.
908478	M40 x 1,5	1 1/4	35,4	53,0	13,0	2	o. r.	o. r.	o. r.
908479	M50 x 1,5	1 1/2	40,3	62,0	14,0	2	o. r.	o. r.	o. r.
908480	M63 x 1,5	2	51,6	76,0	16,0	2	o. r.	o. r.	o. r.

Dimensions and specifications may be changed without prior notice.

o. r. = on request