

Boxes and Holders

Order code	Manufacturer code	Description
18-2900	n/a	BATTERY BOX 2 X AAA WITH SWITCH

Boxes and Holders	Page 1 of 2
The enclosed information is believed to be correct, Information may change 'without notice' due to product improvement. Users should ensure that the product is suitable for their use. E. & O. E.	Revision A 04/07/2003

Batteries

2xAAA Battery Holder Switched with Flying Lead Terminals and Cover

Specification:

Material – Black ABS Resin

Spring - 0.6mm 65C Spring Wire

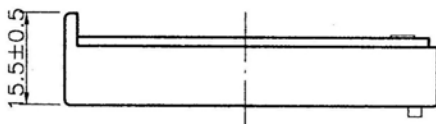
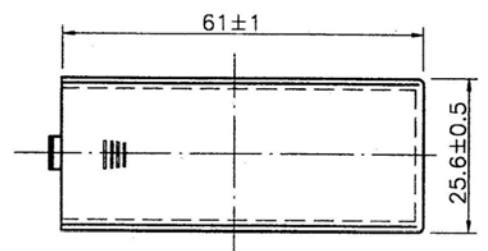
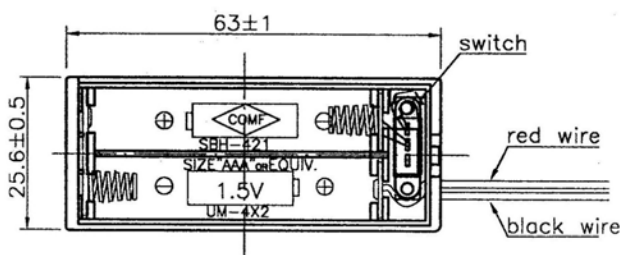
Termination: Flying Lead Terminals

Wire: UL1007 AWG#26
 Red and Black 150mm ± 5mm
 Tinned and Striped 5mm ± 1mm

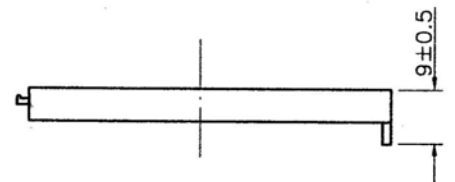
Switched with Cover

Manufacturers No	Description
SBH 421AS	2xAAA Flying Leads & Covers

Dimensions:



BOTTOM



COVER