

sygonix®

App Instructions

Micro WLAN HD camera

Item No. 1677715

Table of contents

	Page
1. Connection	3
a) Connecting the camera to your phone	3
b) Adding the camera to the app	3
c) Adding another camera	4
d) Connecting the camera to a WiFi router	5
2. Live feed	6
a) Entering the live feed	6
b) Live feed settings	6
3. Settings	7
4. App gallery	8
a) Editing the app gallery	8
b) Deleting the whole camera's app gallery	8
5. System information	9

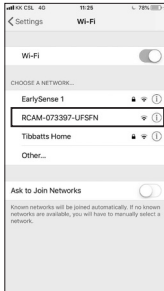
1. Connection

a) Connecting the camera to your phone

- Turn on the camera.
- The yellow LED flashes slowly (pairing mode).

→ If the LED lights up blue, the camera is in standby mode. Press the **WIFI** button to enter the pairing mode.

- Open your phone's WiFi settings. Select "RCAM-XXXXXX-XXXXX" from the list and join this network.

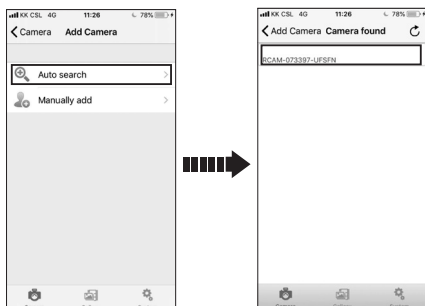


b) Adding the camera to the app

- Download and open the "Mini WiFi Cam" app on your phone.
- Tap on "Click here to add a camera".



- Tap on “Auto search” and then on the camera name “RCAM-XXXXXX-XXXXX”.



→ If the automatic search does not work, tap on “Manually add”.

Name	Enter a name of your own choice.
ID	Enter the ID number (RCAM-XXXXXX-XXXXX) from the bottom of your camera.
User name	Do not change the pre-set user name.
Password	Keep this box empty.

c) Adding another camera

To add another camera, tap “Click here to add camera”.

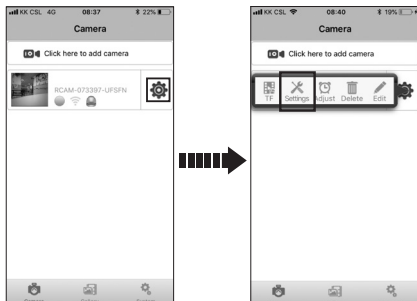


→ You can save up to 6 cameras, depending on the network condition.

d) Connecting the camera to a WiFi router

→ This action enables you to view the live feed from a remote location.

- To connect the camera to a WiFi router, it must first be connected and added to the app on your phone.
- Tap on the gear icon and select "Settings".



- Tap on "WiFi Settings".
- Select the desired WiFi network and enter the corresponding password.



- Tap "Save" and then tap "Yes" in the pop-up window.

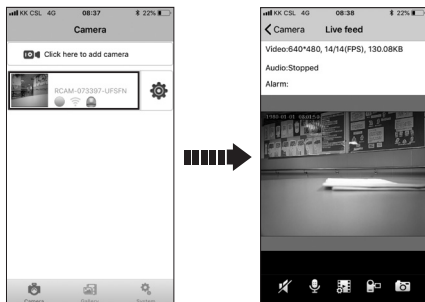


- The camera will automatically reboot and connect to the WiFi router in 1-2 minutes.






2. Live feed

a) Entering the live feed

To enter the live feed, tap on the camera window.

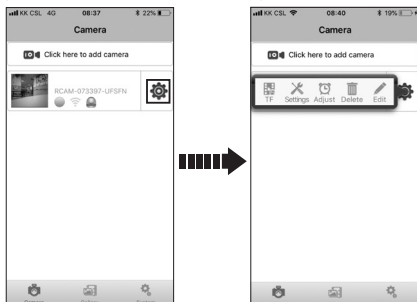






b) Live feed settings


	Audio on/off
	This icon has no function in this mode.
	TV mode / Resolution adjustment
	Manual video recording
	Snapshot

3. Settings

Tap on the gear icon to access the camera settings.

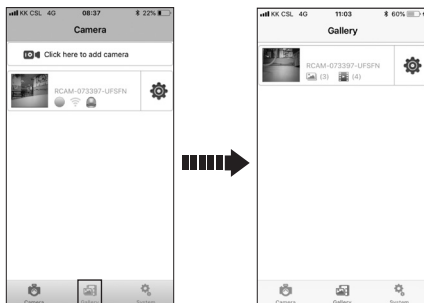


	Device record list	View, delete or share recordings.
	WiFi Settings	Choose and save a WiFi network.
	Mail Settings	Save the mail settings for email notifications. → "Authentication" must be switched on.
	Alarm Settings → Works only with activated mail settings	<ul style="list-style-type: none"> • Motion detection • Send alarm email • Alarm recording
	User Settings	You can set a new user name and password for another user. Share your camera ID, the new user name and password with the other user. The other user can download the app and add the camera manually.
	Restore default	Restore to default settings.
	Auto Upgrade System Firmware	Upgrade to the latest firmware.
	Time Adjust	Set the same time as your mobile phone.
	Delete	Delete a camera from the camera list.

	Edit	Edit camera information.
---	------	--------------------------

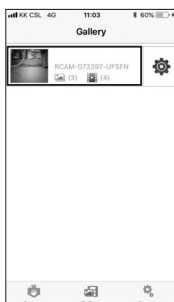
4. App gallery

Tap “Gallery” to access the app gallery settings.



a) Editing the app gallery

- Tap the camera window to enter the camera’s app gallery.
- You can delete or export a particular recording/photo.



b) Deleting the whole camera’s app gallery

To delete the whole camera’s gallery, tap the gear icon and then “Delete”.

5. System information



Tap "System" to:

- Activate/deactivate push messages
- View the system version information

This is a publication by Conrad Electronic SE, Klaus-Conrad-Str. 1, D-92240 Hirschau (www.conrad.com).

All rights including translation reserved. Reproduction by any method, e.g. photocopy, microfilming, or the capture in electronic data processing systems require the prior written approval by the editor. Reprinting, also in part, is prohibited. This publication represents the technical status at the time of printing.

Copyright 2018 by Conrad Electronic SE.