

Basic switch without actuator head Plastic enclosure, EN 50047  
 ASIsafe integrated AS-i status: 1:F-IN1, 2: F-IN2 3:AS-i/FAULT  
 Snap-action contacts 2 NC with M12 connector 4-pole Channel 1 to  
 NC, Channel 2 to NC



Product brand name	SIRIUS
Product designation	Mechanical safety switches
Product type designation	3SF12
Manufacturer's article number	
<ul style="list-style-type: none"> <li>of the supplied basic switch</li> </ul>	<a href="#">3SF1234-1LC05-1BA1</a>
Suitability for use safety switch	Yes

General technical data	
Product function	
<ul style="list-style-type: none"> <li>positive opening</li> </ul>	Yes
Degree of pollution	class 3
Surge voltage resistance rated value	0.8 kV
Protection class IP	IP65
Shock resistance	
<ul style="list-style-type: none"> <li>acc. to IEC 60068-2-27</li> </ul>	30 g / 11 ms
Mechanical service life (switching cycles)	
<ul style="list-style-type: none"> <li>typical</li> </ul>	15 000 000
Reference code acc. to DIN EN 81346-2	B
Reference code acc. to DIN EN 61346-2	B
Active principle	mechanical

Repeat accuracy	0.1 mm
Minimum actuating force in activation direction	20 N
Length of the sensor	89.7 mm
Width of the sensor	31 mm
Design of the switching contact	mechanical
Number of NC contacts for auxiliary contacts	2
Number of NO contacts for auxiliary contacts	0
Number of CO contacts for auxiliary contacts	1
Design of the interface for safety-related communication	ASIsafe via M12 plug

### Enclosure

Design of the housing	block, narrow
Material of the enclosure	plastic
Design of the housing acc. to standard	Yes

### Drive Head

Design of the operating mechanism	Other, without, ASi_basic switch with plug
Design of the switching function	positive opening
Circuit principle	snap-action contacts
Number of switching contacts safety-related	2

### Connections/ Terminals

Type of electrical connection	M12 plug, fixed, 4-pole
Design of plug-in connection	M12 plug, 4-pole: Pin 1 = ASI+ , Pin 2 = not assigned, Pin 3= ASI- , Pin 4 = not assigned
AS interface slave profile	0.B.F
ID1 code	F (hex, variable 0...F)

### Supply voltage

Type of voltage of the supply voltage	DC
• of the optional LED indicator	
Supply voltage	24 V
• of LED	

### Installation/ mounting/ dimensions

Mounting position	any
Mounting type	screw fixing

### Certificates/ approvals

General Product Approval	Functional Safety/Safety of Machinery	Declaration of Conformity	Test Certificates
--------------------------	---------------------------------------	---------------------------	-------------------



[Type Examination Certificate](#)



[Miscellaneous](#)

[Type Test Certificates/Test Report](#)

other

[Confirmation](#)

#### Further information

**Information- and Downloadcenter (Catalogs, Brochures,...)**

[www.siemens.com/sirius/catalogs](http://www.siemens.com/sirius/catalogs)

**Industry Mall (Online ordering system)**

<https://mall.industry.siemens.com/mall/en/en/Catalog/product?mlfb=3SF1234-1LC05-1BA1>

**Cax online generator**

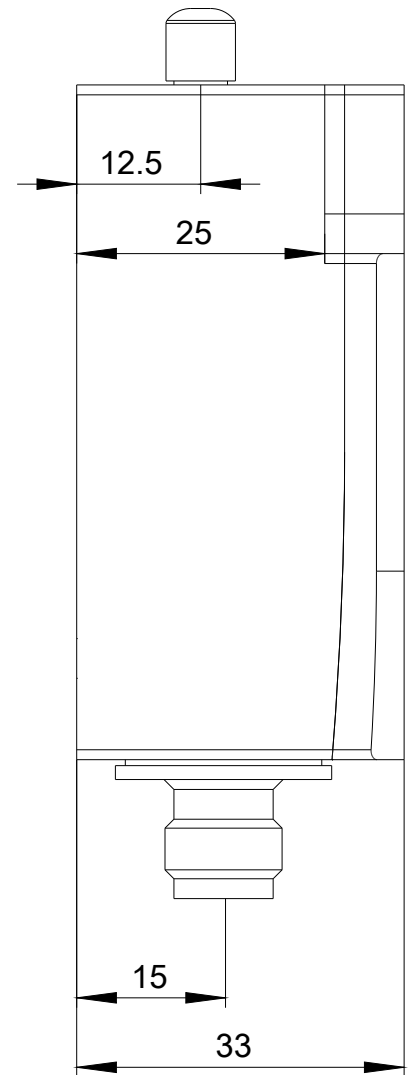
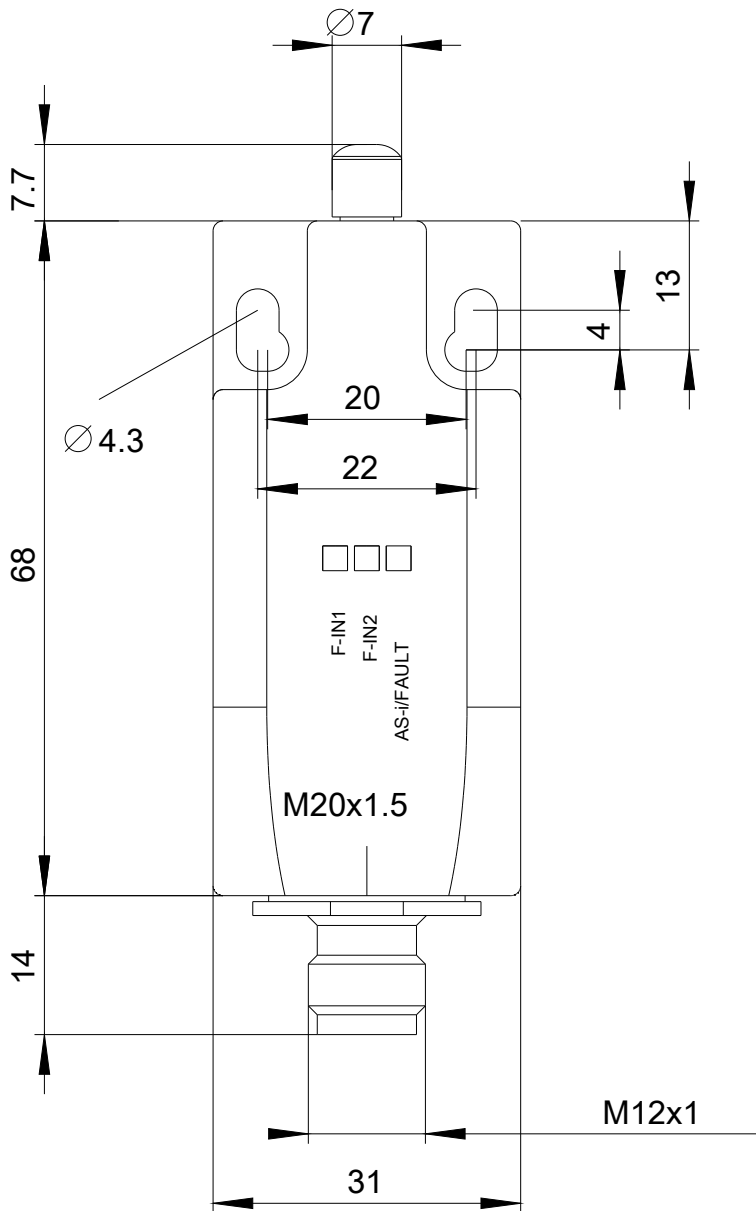
<http://support.automation.siemens.com/WW/CAXorder/default.aspx?lang=en&mlfb=3SF1234-1LC05-1BA1>

**Service&Support (Manuals, Certificates, Characteristics, FAQs,...)**

<https://support.industry.siemens.com/cs/ww/en/ps/3SF1234-1LC05-1BA1>

**Image database (product images, 2D dimension drawings, 3D models, device circuit diagrams, EPLAN macros, ...)**

[http://www.automation.siemens.com/bilddb/cax\\_de.aspx?mlfb=3SF1234-1LC05-1BA1&lang=en](http://www.automation.siemens.com/bilddb/cax_de.aspx?mlfb=3SF1234-1LC05-1BA1&lang=en)





1	→	ASI +
2	→	n. c.
3	→	ASI -
4	→	n. c.

last modified:

09/12/2019