

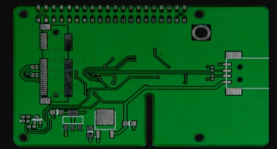
# JeVois A33

## Smart Machine Vision Camera



The JeVois A33 image processing camera combines a camera sensor, an integrated quad-core computer and a USB video connection in a tiny housing. JeVois makes it easy to integrate image processing into your own projects. The powerful 1.34 GHz processor provides enough power to run sophisticated object recognition processing algorithms.

With already more than 30 image processing modules, no programming experience is necessary to use JeVois immediately. Simply download the appropriate module and install it on your JeVois Smart Camera.



## Technical Specifications

<b>Model</b>	JeVois A33
<b>Article No.</b>	Jevois-A33
<b>CPU</b>	Quad-Core ARM Cortex A7 with 1.34 GHz with VFPv4 and NEON
<b>GPU</b>	Mali-400 Dual-Core (supports OpenGL-ES 2.0)
<b>RAM</b>	256MB DDR3-1600
<b>Memory</b>	MicroSDHC-Slot for firmware and data (up to 25MByte/s)
<b>Camera</b>	1.3 MP Camera
<b>Resolutions</b>	<p>SXGA (1280 x 1024) with up to 15 FPS</p> <p>VGA (640 x 480) with up to 30 FPS</p> <p>CIF (352 x 288) with up to 60 FPS</p> <p>QVGA (320 x 240) with up to 60 FPS</p> <p>QCIF (176 x 144) with up to 120 FPS</p> <p>QQVGA (160 x 120) with up to 60 FPS</p> <p>QQCIF (88 x 72) with up to 120 FPS</p>
<b>Interfaces</b>	<p>Mini-USB (Power-Supply &amp; Video-Streaming)</p> <p>Serial hardware connection (5V or 3,3V) for the communication with Arduino and other microcontrollers</p>
<b>Power</b>	Max. 3.5W via USB (requires USB 3.0 or an Y-Cable at to USB 2.0 Ports)
<b>Thermal Features</b>	Integrated fan
<b>Dimensions</b>	39 x 31 x 23mm (incl. case and fan)
<b>Scope of Delivery</b>	JeVois A33 Smart-Camera, Micro-Serial-Cable, MicroSD Card with preinstalled software, microSD-Card-USB-Adapter, Mini-USB-Cable, Storage box
<b>EAN</b>	4250236817002