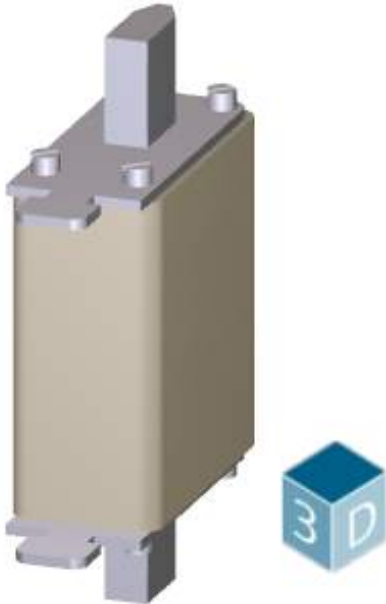


SITOR fuse link, with blade contacts, NH000, In: 32 A, gR, Un AC: 690 V, Un DC: 440 V, front indicator



Model	
Product brand name	SETRON
Product designation	SITOR fuse link
Design of the product	With blade contacts
Design of an identification indicator	front indicator
Design of the switching contact	With bolt-on links, silver-plated
Design of the fuse link	SITOR, LV HRC design
General technical data	
Size of fuse system / acc. to DIN EN 60269-1	NH000
Operating class of the fuse link	gR
Supply voltage	
Type of voltage	AC/DC
Current / at AC / rated value	32 A
Supply voltage	
• at AC / rated value	690 V
• at DC	440 V
Dissipation	
Power loss [W]	11 W

Power loss [W]	11 W
<ul style="list-style-type: none"> • for rated value of the current / at AC / in hot operating state / per pole 	

Product details

Product description	Not non-interchangeable
---------------------	-------------------------

Mechanical Design

Mounting position	Any, preferably vertical
-------------------	--------------------------

Environmental conditions

Ambient temperature	-20 ... +50 °C
Environmental category	-20 to +50 at 95% relative humidity

Certificates

Reference code	
<ul style="list-style-type: none"> • acc. to DIN EN 61346-2 • acc. to DIN EN 81346-2 	F F

Declaration of Conformity



Further information

Information- and Downloadcenter (Catalogs, Brochures,...)

<http://www.siemens.com/lowvoltage/catalogs>

Industry Mall (Online ordering system)

<https://mall.industry.siemens.com/mall/en/en/Catalog/product?mlfb=3NE8801-0MK>

Service&Support (Manuals, Certificates, Characteristics, FAQs,...)

<https://support.industry.siemens.com/cs/ww/en/ps/3NE8801-0MK>

Image database (product images, 2D dimension drawings, 3D models, device circuit diagrams, ...)

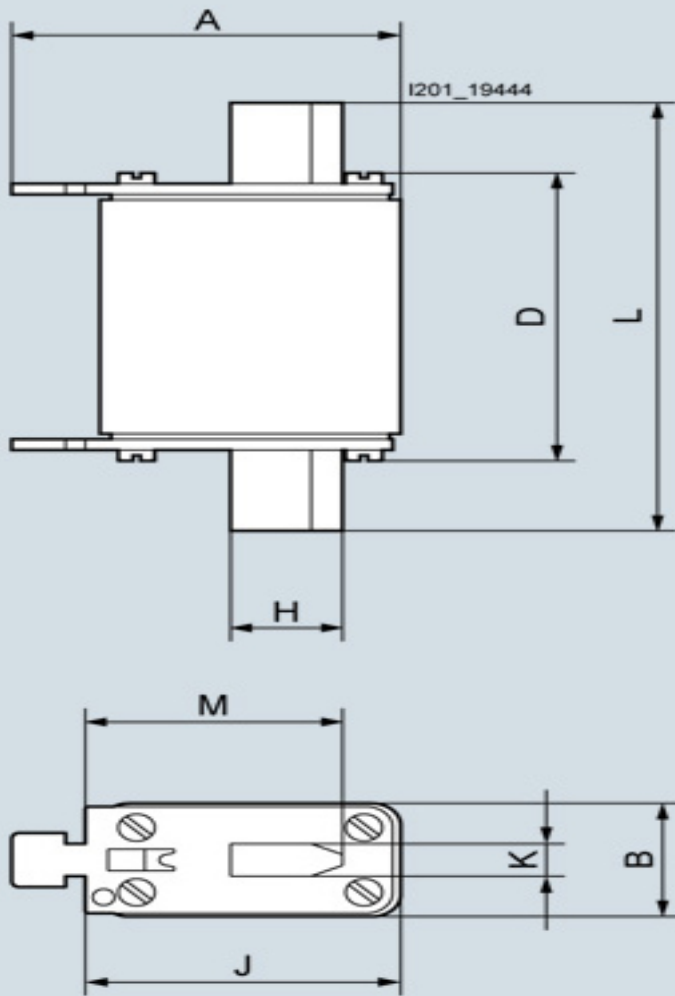
http://www.automation.siemens.com/bilddb/cax_en.aspx?mlfb=3NE8801-0MK

CAX-Online-Generator

<http://www.siemens.com/cax>

Tender specifications

<http://www.siemens.com/specifications>



Type	Dimensions							
	A	B	D	H	J	K	M	L
3NE88..-0MK	53	21	51,5	15	43	6	35	78,5
3NE82..-0MK	62,5	44	70,5	20	53	6	40	135
3NE83..-0MK	68	50	70,5	25	61	6	48	150

