




Product information GML 209 NJ GB1 schwarz/black

Industrial Connecting Solutions:Rectangular Connectors:Valve Connectors (Type A -B -C):Type B:Field Attachable Valve Connectors:Valve Connectors with electronic insert (Industrial standard):GML 209

NJ GB1 schwarz/black

<http://e-catalog.hirschmann.com/link/57078-24228-256261-256266-256271-276218-24327-35196/en/conf/ui/state>

Name	GML 209 NJ GB1 schwarz/black
	
	Bridge-type rectifier with protective circuit (varistor)
Delivery informations	
Availability	available
Product description	
Description	Bridge-type rectifier with protective circuit (varistor)
Type	GML 209 NJ GB1 schwarz/black
Order No.	933 398-100
Other standard types	grey housing, Order No. 933 398-106
Number of contacts	2 + PE
Cable gland	PG 9
Conductor size	max. 0.75 mm ²
Standard	industrial standard (11 mm)
Housing Color	black
Construction type	B
Description of Wiring	
Voltage rectifier	bridge-type rectifier
Suppressor	Varistor
Technical data	
Pin dimensions	6.3 mm x 0.8 mm
Rated voltage	AC/DC 250 V
Rated current	2 A
Contact resistance	<= 4 mOhm
Type of termination	screw / cable shoe / cable eye
Suitable cables	4.5 mm to 7 mm diameter
Mounting	central screw
Material	
Contact surface material	Sn
Contact bearer material	PA
Housing material	PA
Environmental conditions	
Protection class (IEC 60529)	IP 65
Pollution severity	3
Temperature range	-40 °C to +90 °C
Inflammability class	
Housing	94 V-1
Contact bearer	94 HB
Approvals	
UR	UR
VDE	VDE
Packing unit	
Packaging unit	200 pieces



HIRSCHMANN

A BELDEN BRAND

Industrial Connecting Solutions:Rectangular Connectors:Valve Connectors (Type A -B -C):Type B:Field Attachable Valve Connectors:Valve Connectors with electronic insert (Industrial standard):GML 209

NJ GB1 schwarz/black

<http://e-catalog.hirschmann.com/link/57078-24228-256261-256266-256271-276218-24327-35196/en/conf/ulistate>

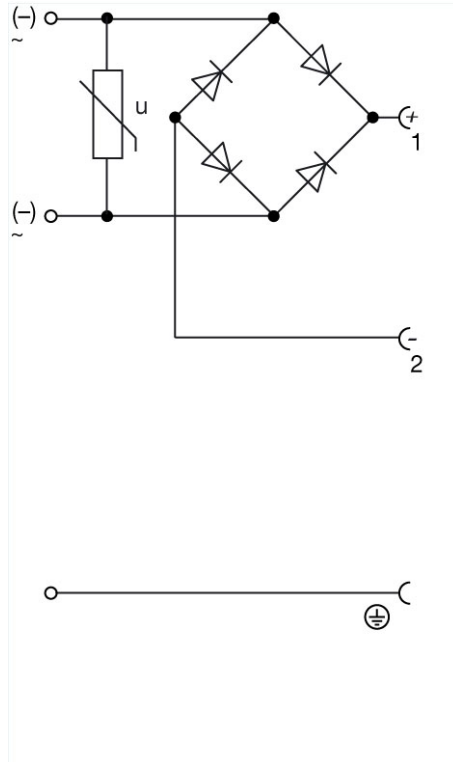
Scope of delivery and accessories

Accessories to order separately

(NBR) flat gasket GM 207-3, Order No. 731 423-002; (EPDM) flat gasket GM 207-7, Order No. 731 755-004; knurled screw GDM 3011-8, Order No. 732 574-001; stainless steel screw GDM 3011 RF-1, Order No. 734 363-001

Picture

Drawing



Belden Deutschland GmbH

Im Gewerbepark 2
58579 Schalksmühle
Germany
Phone: +49 7127/14-1806
E-Mail: icos-sales@belden.com

The information published in the websites has been compiled as carefully as possible. It is subject to alteration without notice in technical as well as in price-related/commercial respect. The complete information and data were available on user documentation. Mandatory information can only be obtained by a concrete query.