

LV HRC fuse element, NH2, In: 224 A, gG, Un AC: 690 V, Un DC: 440 V, Front indicator, live grip lugs



Model	
Product brand name	SETRON
Product designation	LV HRC fuse link
Design of the product	With blade contacts
Design of an identification indicator	Front indicators
Design of the switching contact	Non-corroding, silver-plated
Design of the fuse link	LV HRC fuse link
General technical data	
Size of fuse system / acc. to DIN EN 60269-1	NH2
Operating class of the fuse link	gG
circuit-breaker / Design	3NA3
Type of voltage	AC/DC
Current / at AC / rated value	224 A
Supply voltage	
• at AC / rated value	690 V
• at DC	440 V
Protection class	
Protection class IP	IP20, with connected conductors

Switching capacity

Switching capacity current

- at DC / acc. to IEC 60947-2 / rated value 25 kA
- acc. to IEC 60947-2 / rated value 120 kA

Dissipation

Power loss [W] 19.9 W

Power loss [W] / for rated value of the current / at AC / in hot operating state / per pole 19.9 W

Current

Tripping residual / rated value / derated current / at 40 Cel 212.8 A

Diken-export / Let-through energy DE_3NA_2_690_gG_224

Mechanical Design

Width

- of the enclosure 57.8 mm

Mounting position Any, preferably vertical

Net weight 615 g

Environmental conditions

Ambient temperature -5 ... +40 °C

- during storage Air humidity 90% at 20 °C

Environmental category -20 to +50 at 95% relative humidity

Certificates

Reference code

- acc. to DIN EN 61346-2 F
- acc. to DIN EN 81346-2 F

General Product Approval

Declaration of Conformity

Test Certificates



CCC



VDE



EG-Konf.

[Type Test Certificates/Test Report](#)

[Special Test Certificate](#)

[Miscellaneous](#)

Shipping Approval

other



GL

[Environmental Conformations](#)

[Miscellaneous](#)

Further information

Information- and Downloadcenter (Catalogs, Brochures,...)

<http://www.siemens.com/lowvoltage/catalogs>

Industry Mall (Online ordering system)

<https://mall.industry.siemens.com/mall/en/en/Catalog/product?mlfb=3NA3242-6>

Service&Support (Manuals, Certificates, Characteristics, FAQs,...)

<https://support.industry.siemens.com/cs/ww/en/ps/3NA3242-6>

Image database (product images, 2D dimension drawings, 3D models, device circuit diagrams, ...)

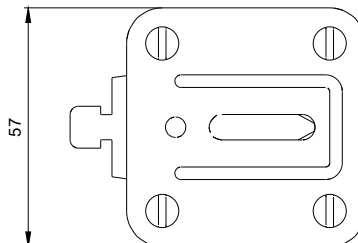
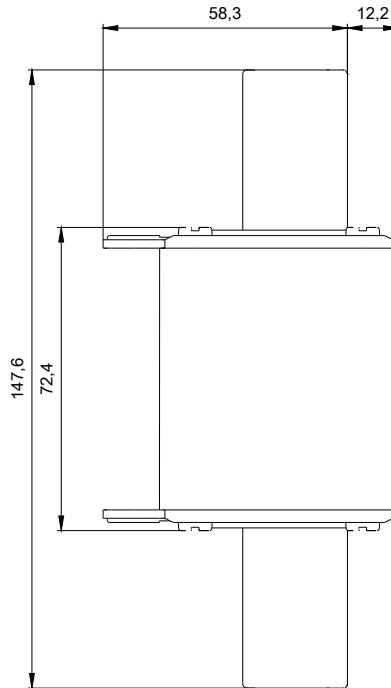
http://www.automation.siemens.com/bilddb/cax_en.aspx?mlfb=3NA3242-6

CAX-Online-Generator

<http://www.siemens.com/cax>

Tender specifications

<http://www.siemens.com/specifications>



1

-F1



2