

LV HRC fuse element, NH2, In: 300 A, gG, Un AC: 500 V, Un DC: 440 V, Front indicator, live grip lugs



| Model | |
|--|---------------------------------|
| Product brand name | SETRON |
| Product designation | LV HRC fuse link |
| Design of the product | With blade contacts |
| Design of an identification indicator | Front indicators |
| Design of the switching contact | Non-corroding, silver-plated |
| Design of the fuse link | LV HRC fuse link |
| General technical data | |
| Size of fuse system / acc. to DIN EN 60269-1 | NH2 |
| Operating class of the fuse link | gG |
| circuit-breaker / Design | 3NA3 |
| Type of voltage | AC/DC |
| Current / at AC / rated value | 300 A |
| Supply voltage | |
| • at AC / rated value | 500 V |
| • at DC | 440 V |
| Protection class | |
| Protection class IP | IP20, with connected conductors |

Switching capacity

Switching capacity current

- at DC / acc. to IEC 60947-2 / rated value 25 kA
- acc. to IEC 60947-2 / rated value 120 kA

Dissipation

| | |
|---|--------|
| Power loss [W] | 19.4 W |
| Power loss [W] / for rated value of the current / at AC / in hot operating state / per pole | 19.4 W |

Current

| | |
|---|---------------------|
| Tripping residual / rated value / derated current / at 40 Cel | 285 A |
| Diken-export / Let-through energy | DE_3NA_2_500_gL_300 |

Mechanical Design

| | |
|--|--------------------------|
| Width <ul style="list-style-type: none">• of the enclosure | 57.8 mm |
| Mounting position | Any, preferably vertical |
| Net weight | 655 g |

Environmental conditions

| | |
|--|--|
| Ambient temperature <ul style="list-style-type: none">• during storage | -5 ... +40 °C Air humidity 90% at 20 °C |
| Environmental category | -20 to +50 at 95% relative humidity |

Certificates

| | |
|--|--------|
| Reference code <ul style="list-style-type: none">• acc. to DIN EN 61346-2• acc. to DIN EN 81346-2 | F F |
|--|--------|

| General Product Approval | Declaration of Conformity | Test Certificates | Shipping Approval |
|--------------------------|---------------------------|-------------------|-------------------|
|--------------------------|---------------------------|-------------------|-------------------|



[Type Test Certificates/Test Report](#)

[Special Test Certificate](#)

[Miscellaneous](#)



GL

other

[Environmental Confirmations](#)

[Miscellaneous](#)

Further information

Information- and Downloadcenter (Catalogs, Brochures,...)

<http://www.siemens.com/lowvoltage/catalogs>

Industry Mall (Online ordering system)

<https://mall.industry.siemens.com/mall/en/en/Catalog/product?mlfb=3NA3250>

Service&Support (Manuals, Certificates, Characteristics, FAQs,...)

<https://support.industry.siemens.com/cs/ww/en/ps/3NA3250>

Image database (product images, 2D dimension drawings, 3D models, device circuit diagrams, ...)

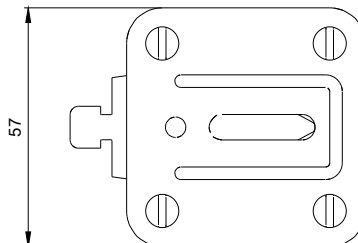
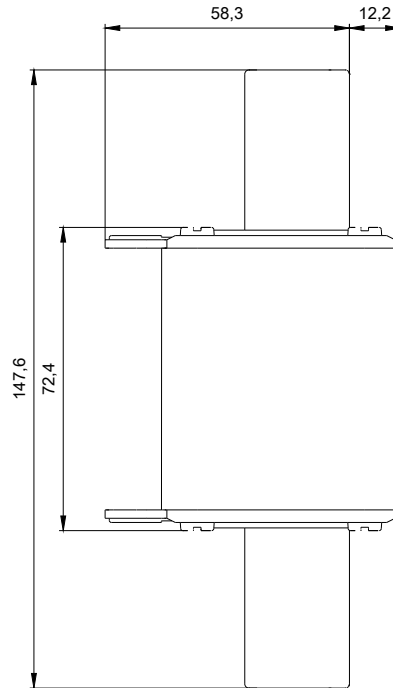
http://www.automation.siemens.com/bilddb/cax_en.aspx?mlfb=3NA3250

CAX-Online-Generator

<http://www.siemens.com/cax>

Tender specifications

<http://www.siemens.com/specifications>



1

-F1



2

