

Residual current operated circuit breaker, 2-pole, Type AC, In: 16 A, 30 mA, Un AC: 24-125 V



| Model  |                              |
|--|------------------------------|
| Product brand name   | SENTRON                      |
| Product designation  | RCCB                         |
| Design of the product  | Instantaneous                |
| Product variations   | Un AC: 24-125 V              |
| General technical data   |                              |
| Number of poles  | 2                            |
| Size of installation devices / acc. to DIN 43880   | 1                            |
| Protection against electrical shock  | Finger and back-of-hand safe |
| Short-circuit current rating   | 10 kA                        |
| circuit-breaker / Design   | 5SV4                         |
| Mechanical service life (switching cycles) / typical   | 10 000                       |
| Switching function / short-term delayed  | No                           |
| Overvoltage category   | III                          |
| Supply voltage   |                              |
| Current / at AC / rated value  | 16 A                         |
| <ul style="list-style-type: none"> <li>Supply voltage / for testing equipment / minimum</li> </ul> | 24 V                         |

• rated value

50 Hz

### Protection class

Protection class IP IP20, if the distribution board is installed, with connected conductors

### Switching capacity

Switching capacity current / according to IEC 61008-1 / rated value 0.5 kA

### Dissipation

Power loss [W] / for rated value of the current / at AC / in hot operating state / per pole 0.4 W

### Current

Tripping residual current / rated value 30 mA

Tripping residual / rated value / derated current

- at 40 Cel 16 A
- at 45 Cel 16 A
- at 50 Cel 16 A
- at 55 Cel 16 A
- at 60 Cel 16 A
- at 65 Cel 16 A
- at 70 Cel 16 A

Type of fault current AC

I<sub>2t</sub>-value / permissible 58 000 A<sup>2</sup>·s

### Product details

Product feature / silicon-free Yes

Product extension / can be installed / supplementary devices Yes

### Connections

Connectable conductor cross-section

- solid 0.75 ... 35 mm<sup>2</sup>
- stranded 0.75 ... 35 mm<sup>2</sup>

Tightening torque / with screw-type terminals 2.5 ... 3 N·m

Position / of power supply cord top or bottom

### Mechanical Design

Height 90 mm

Width 36 mm

Depth 70 mm

Installation depth 70 mm

Number of width units 2

Mounting type DIN rail (REG)

Mounting position any

|            |       |
|------------|-------|
| Net weight | 202 g |
|------------|-------|

### Environmental conditions

|                     |                |
|---------------------|----------------|
| Ambient temperature | -25 ... +45 °C |
| • during storage    | -40 ... +75 °C |

### Certificates

|                          |   |
|--------------------------|---|
| Reference code           |   |
| • acc. to DIN EN 61346-2 | F |
| • acc. to DIN EN 81346-2 | F |

|                                 |                                  |              |                |
|---------------------------------|----------------------------------|--------------|----------------|
| <b>General Product Approval</b> | <b>Declaration of Conformity</b> | <b>other</b> | <b>Railway</b> |
|---------------------------------|----------------------------------|--------------|----------------|

[Miscellaneous](#)



EG-Konf.

[Miscellaneous](#)

[Vibration and Shock](#)

[Confirmation](#)

### Further information

**Information- and Downloadcenter (Catalogs, Brochures,...)**

<http://www.siemens.com/lowvoltage/catalogs>

**Industry Mall (Online ordering system)**

<https://mall.industry.siemens.com/mall/en/en/Catalog/product?mlfb=5SV4311-0KK13>

**Service&Support (Manuals, Certificates, Characteristics, FAQs,...)**

<https://support.industry.siemens.com/cs/ww/en/ps/5SV4311-0KK13>

**Image database (product images, 2D dimension drawings, 3D models, device circuit diagrams, ...)**

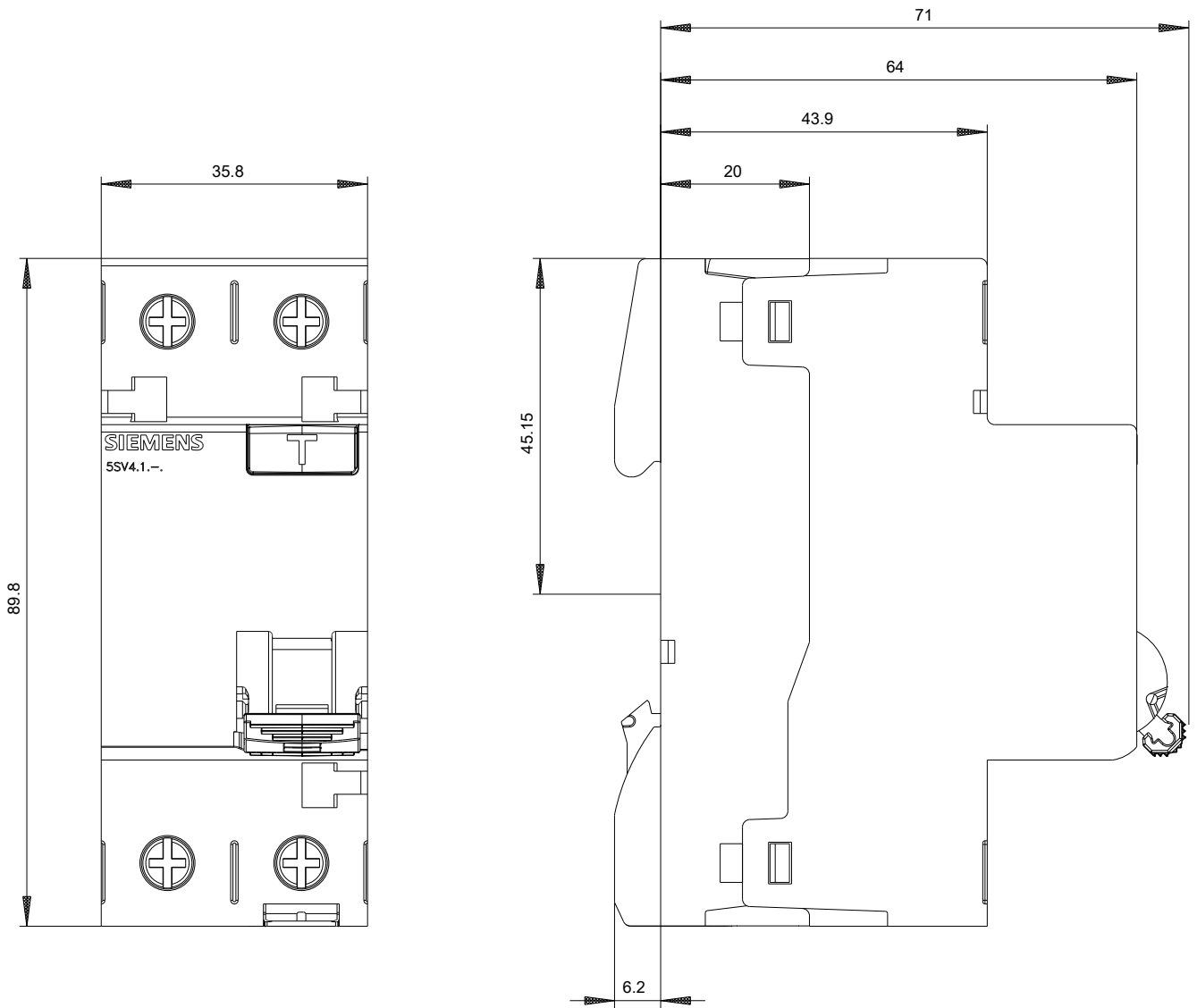
[http://www.automation.siemens.com/bilddb/cax\\_en.aspx?mlfb=5SV4311-0KK13](http://www.automation.siemens.com/bilddb/cax_en.aspx?mlfb=5SV4311-0KK13)

**CAX-Online-Generator**

<http://www.siemens.com/cax>

**Tender specifications**

<http://www.siemens.com/specifications>



-CB





