

Residual current operated circuit breaker, 2-pole, Type AC, In: 63 A, 30 mA, Un AC: 24-125 V



Model	
Product brand name	SETRON
Product designation	RCCB
Design of the product	Instantaneous
Product variations	Un AC: 24-125 V
General technical data	
Number of poles	2
Size of installation devices / acc. to DIN 43880	1
Protection against electrical shock	Finger and back-of-hand safe
Short-circuit current rating	10 kA
circuit-breaker / Design	5SV4
Mechanical service life (switching cycles) / typical	10 000
Switching function / short-term delayed	No
Overvoltage category	III
Supply voltage	
Current / at AC / rated value	63 A
<ul style="list-style-type: none"> <li>Supply voltage / for testing equipment / minimum</li> </ul>	24 V

- rated value

50 Hz

### Protection class

Protection class IP	IP20, if the distribution board is installed, with connected conductors
---------------------	---

### Switching capacity

Switching capacity current / according to IEC 61008-1 / rated value	0.8 kA
---	--------

### Dissipation

Power loss [W] / for rated value of the current / at AC / in hot operating state / per pole	5.3 W
---	-------

### Current

Tripping residual current / rated value	30 mA
Tripping residual / rated value / derated current	
<ul style="list-style-type: none"> <li>• at 40 Cel</li> <li>• at 45 Cel</li> <li>• at 50 Cel</li> <li>• at 55 Cel</li> <li>• at 60 Cel</li> <li>• at 65 Cel</li> <li>• at 70 Cel</li> </ul>	63 A 63 A 63 A 63 A 63 A 56.96 A 48.19 A
Type of fault current	AC
I <sub>2t</sub> -value / permissible	110 000 A <sup>2</sup> ·s

### Product details

Product feature / silicon-free	Yes
Product extension / can be installed / supplementary devices	Yes

### Connections

Connectable conductor cross-section	
<ul style="list-style-type: none"> <li>• solid</li> <li>• stranded</li> </ul>	0.75 ... 35 mm <sup>2</sup> 0.75 ... 35 mm <sup>2</sup>
Tightening torque / with screw-type terminals	2.5 ... 3 N·m
Position / of power supply cord	top or bottom

### Mechanical Design

Height	90 mm
Width	36 mm
Depth	70 mm
Installation depth	70 mm
Number of width units	2
Mounting type	DIN rail (REG)
Mounting position	any

Net weight	200 g
------------	-------

### Environmental conditions

Ambient temperature	-25 ... +45 °C
• during storage	-40 ... +75 °C

### Certificates

Reference code	
• acc. to DIN EN 61346-2	F
• acc. to DIN EN 81346-2	F

<b>General Product Approval</b>	<b>Declaration of Conformity</b>	<b>other</b>	<b>Railway</b>
---------------------------------	----------------------------------	--------------	----------------

[Miscellaneous](#)



EG-Konf.

[Miscellaneous](#)

[Vibration and Shock](#)

[Confirmation](#)

### Further information

**Information- and Downloadcenter (Catalogs, Brochures,...)**

<http://www.siemens.com/lowvoltage/catalogs>

**Industry Mall (Online ordering system)**

<https://mall.industry.siemens.com/mall/en/en/Catalog/product?mlfb=5SV4316-0KK13>

**Service&Support (Manuals, Certificates, Characteristics, FAQs,...)**

<https://support.industry.siemens.com/cs/ww/en/ps/5SV4316-0KK13>

**Image database (product images, 2D dimension drawings, 3D models, device circuit diagrams, ...)**

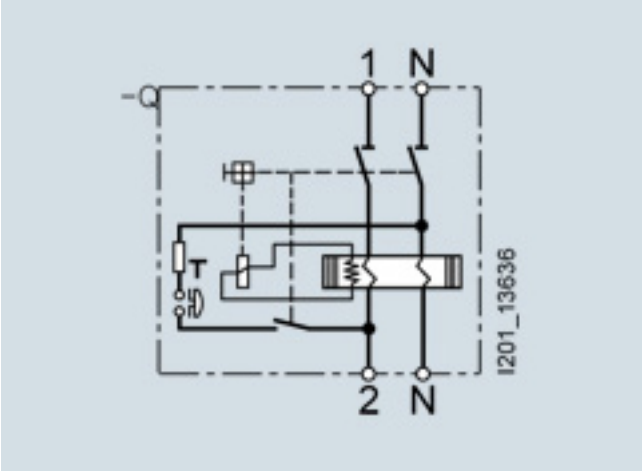
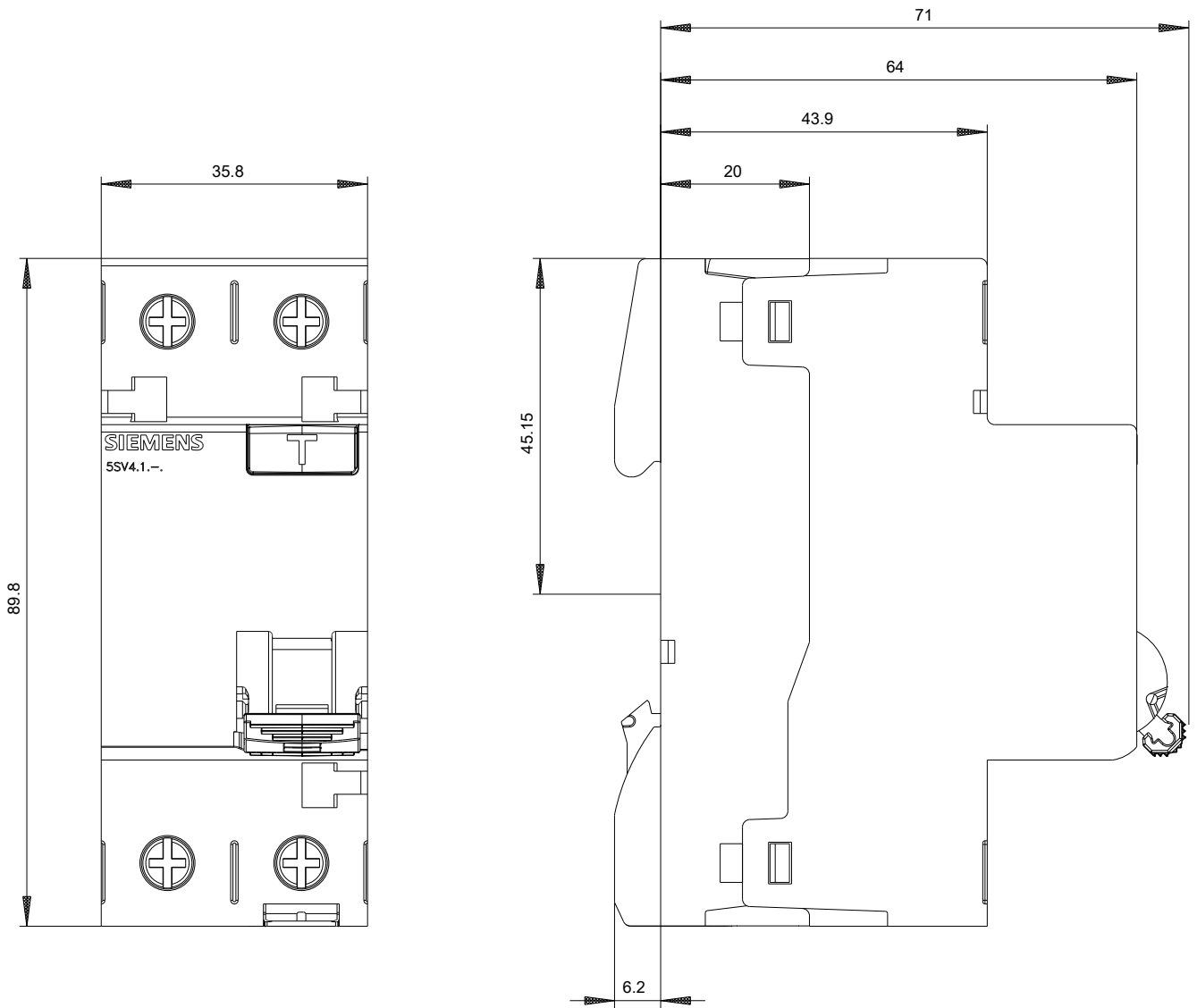
[http://www.automation.siemens.com/bilddb/cax\\_en.aspx?mlfb=5SV4316-0KK13](http://www.automation.siemens.com/bilddb/cax_en.aspx?mlfb=5SV4316-0KK13)

**CAX-Online-Generator**

<http://www.siemens.com/cax>

**Tender specifications**

<http://www.siemens.com/specifications>



-CB





