

Residual current operated circuit breaker, 2-pole, Type AC, In: 40 A, 300 mA, Un AC: 230 V, N left



| Model  |                              |
|--|------------------------------|
| Product brand name                                   | SENTRON                      |
| Product designation                                  | RCCB                         |
| Design of the product                                | Instantaneous                |
| Product variations                                   | N left                       |
| General technical data                               |                              |
| Number of poles                                      | 2                            |
| Size of installation devices / acc. to DIN 43880     | 1                            |
| Protection against electrical shock                  | Finger and back-of-hand safe |
| Short-circuit current rating                         | 10 kA                        |
| circuit-breaker / Design                             | 5SV4                         |
| Mechanical service life (switching cycles) / typical | 10 000                       |
| Switching function / short-term delayed              | No                           |
| Overvoltage category                                 | III                          |
| Supply voltage                                       |                              |
| Current / at AC / rated value                        | 40 A                         |
| • Supply voltage / at AC / rated value               | 230/400 V                    |

|  |       |
|--|-------|
| • Supply voltage / for testing equipment / minimum | 100 V |
| • rated value                                      | 50 Hz |

### Protection class

|                     |   |
|---------------------|---|
| Protection class IP | IP20, if the distribution board is installed, with connected conductors |
|---------------------|---|

### Switching capacity

|   |        |
|---|--------|
| Switching capacity current / according to IEC 61008-1 / rated value | 0.5 kA |
|---|--------|

### Dissipation

|   |       |
|---|-------|
| Power loss [W] / for rated value of the current / at AC / in hot operating state / per pole | 1.6 W |
|---|-------|

### Current

|   |        |
|---|--------|
| Tripping residual current / rated value | 300 mA |
|---|--------|

|   |         |
|---|---------|
| Tripping residual / rated value / derated current |         |
| • at 40 Cel                                       | 40 A    |
| • at 45 Cel                                       | 38.1 A  |
| • at 50 Cel                                       | 35.59 A |
| • at 55 Cel                                       | 32.29 A |
| • at 60 Cel                                       | 28.19 A |
| • at 65 Cel                                       | 23.3 A  |
| • at 70 Cel                                       | 17.62 A |

|                       |    |
|-----------------------|----|
| Type of fault current | AC |
|-----------------------|----|

|                                      |                          |
|--------------------------------------|--------------------------|
| I <sup>2</sup> t-value / permissible | 58 000 A <sup>2</sup> ·s |
|--------------------------------------|--------------------------|

### Product details

|                                |     |
|--------------------------------|-----|
| Product feature / silicon-free | Yes |
|--------------------------------|-----|

|  |     |
|--|-----|
| Product extension / can be installed / supplementary devices | Yes |
|--|-----|

### Connections

|                                     |                             |
|-------------------------------------|-----------------------------|
| Connectable conductor cross-section |                             |
| • solid                             | 0.75 ... 35 mm <sup>2</sup> |
| • stranded                          | 0.75 ... 35 mm <sup>2</sup> |

|   |               |
|---|---------------|
| Tightening torque / with screw-type terminals | 2.5 ... 3 N·m |
|---|---------------|

|                                 |               |
|---------------------------------|---------------|
| Position / of power supply cord | top or bottom |
|---------------------------------|---------------|

### Mechanical Design

|        |       |
|--------|-------|
| Height | 90 mm |
|--------|-------|

|       |       |
|-------|-------|
| Width | 36 mm |
|-------|-------|

|       |       |
|-------|-------|
| Depth | 70 mm |
|-------|-------|

|                    |       |
|--------------------|-------|
| Installation depth | 70 mm |
|--------------------|-------|

|                       |   |
|-----------------------|---|
| Number of width units | 2 |
|-----------------------|---|

|                   |                |
|-------------------|----------------|
| Mounting type     | DIN rail (REG) |
| Mounting position | any            |

### Environmental conditions

|                     |                |
|---------------------|----------------|
| Ambient temperature | -25 ... +45 °C |
| • during storage    | -40 ... +75 °C |

### Certificates

|                          |   |
|--------------------------|---|
| Reference code           |   |
| • acc. to DIN EN 61346-2 | F |
| • acc. to DIN EN 81346-2 | F |

| General Product Approval | Declaration of Conformity | other | Railway |
|--------------------------|---------------------------|-------|---------|
|--------------------------|---------------------------|-------|---------|



CCC

[Miscellaneous](#)



EG-Konf.

[Miscellaneous](#)

[Vibration and Shock](#)

[Confirmation](#)

### Further information

#### Information- and Downloadcenter (Catalogs, Brochures,...)

<http://www.siemens.com/lowvoltage/catalogs>

#### Industry Mall (Online ordering system)

<https://mall.industry.siemens.com/mall/en/en/Catalog/product?mlfb=5SV4614-0KL>

#### Service&Support (Manuals, Certificates, Characteristics, FAQs,...)

<https://support.industry.siemens.com/cs/ww/en/ps/5SV4614-0KL>

#### Image database (product images, 2D dimension drawings, 3D models, device circuit diagrams, ...)

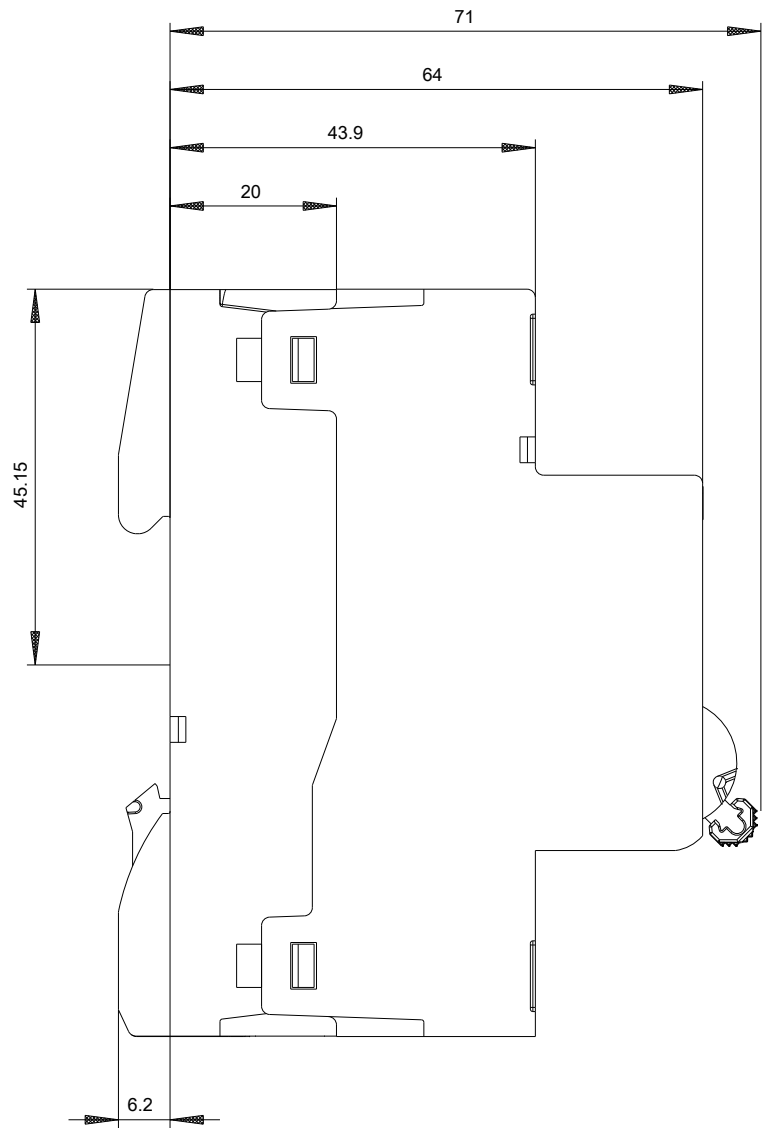
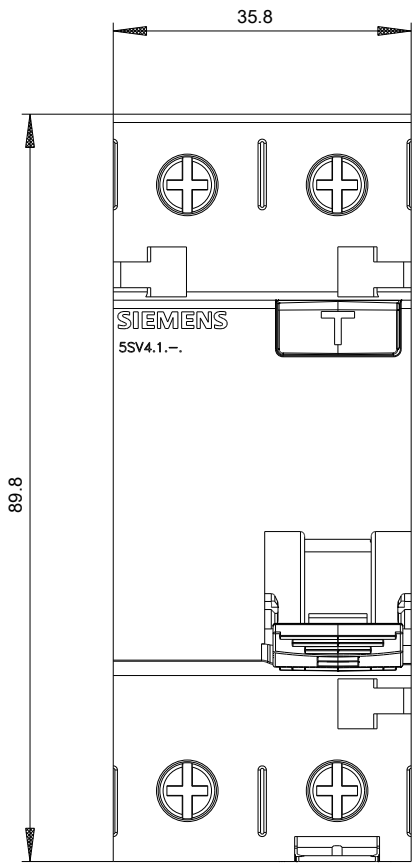
[http://www.automation.siemens.com/bilddb/cax\\_en.aspx?mlfb=5SV4614-0KL](http://www.automation.siemens.com/bilddb/cax_en.aspx?mlfb=5SV4614-0KL)

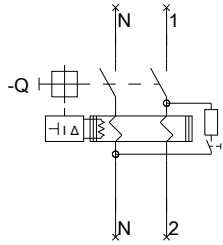
#### CAX-Online-Generator

<http://www.siemens.com/cax>

#### Tender specifications

<http://www.siemens.com/specifications>





Siemens

5SV(3,4)x1x-x

Format / Size: Hybrid quer

-CB

