

Latest operating instructions

Download the latest operating instructions via the link www.conrad.com/downloads or scan the QR code shown. Follow the instructions on the website.



Explanation of symbols



The lightning symbol inside a triangle is used when there is a potential risk of personal injury, such as electric shock.



An exclamation mark in a triangle indicates important instructions in this operating manual that absolutely have to be observed.



The arrow symbol indicates specific tips and advice on operation.

Delivery content

- RSL wireless wall switch
- Battery 12 V/27 A
- Operating instructions

Intended use

This radio wall switch can be used for programming and controlling a suitable radio receiver. With optimal ambient conditions the range is up to 70 meters.

The radio wall switch is powered by a 12 V battery (type: 27A).

It is intended for indoor use only. Do not use it outdoors. Contact with moisture, e.g. in bathrooms, must be avoided under all circumstances.

For safety and approval purposes, you must not rebuild and/or modify this product. If you use the product for purposes other than those described above, the product may be damaged. In addition, improper use can cause hazards such as short circuiting, fire, electric shock etc. Read the instructions carefully and keep them. Make this product available to third parties only together with its operating instructions.

This product complies with the statutory national and European requirements. All company names and product names are trademarks of their respective owners. All rights reserved.

Safety instructions



Read the operating instructions carefully and especially observe the safety information. If you do not follow the safety instructions and information on proper handling in this manual, we assume no liability for any resulting personal injury or damage to property. Such cases will invalidate the warranty/guarantee.



a) General

- The device is not a toy. Keep it out of the reach of children and pets.
- Do not leave packaging material lying around carelessly. This may become dangerous playing material for children.

- Protect the product from extreme temperatures, direct sunlight, strong jolts, high humidity, moisture, flammable gases, vapours and solvents.
- Do not place the product under any mechanical stress.
- If it is no longer possible to operate the product safely, take it out of operation and protect it from any accidental use. Safe operation can no longer be guaranteed if the product:
 - is visibly damaged,
 - is no longer working properly,
 - has been stored for extended periods in poor ambient conditions or
 - has been subjected to any serious transport-related stresses.
- Please handle the product carefully. Jolts, impacts or a fall even from a low height can damage the product.
- Also observe the safety and operating instructions of any other devices which are connected to the product.
- Check the product for damage before each use! If you notice any damage, do not use the product any longer! There is a risk of a life-threatening electric shock!
- Ensure that the insulation for the entire product is neither damaged nor destroyed. Never disassemble the product! There are no serviceable parts inside.
- Do not use this product in hospitals or medical institutions. Although the product emits only relatively weak radio signals, these may lead to the malfunction of life-support systems. The same may also be the case in other areas.
- Keep the product away from strong magnetic fields occurring near machines, electric motors or loudspeakers.

- Consult an expert when in doubt about operation, safety or connection of the device.
- Maintenance, modifications and repairs are to be performed exclusively by an expert or at a qualified shop.
- If you have questions which remain unanswered by these operating instructions, contact our technical support service or other technical personnel.

b) Batteries

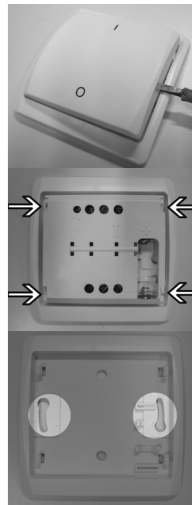
- Correct polarity must be observed while inserting the battery.
- The battery should be removed from the device if it is not used for a long period of time to avoid damage through leaking. Leaking or damaged batteries might cause acid burns when in contact with skin, therefore use suitable protective gloves to handle corrupted batteries.
- Batteries must be kept out of reach of children. Do not leave batteries lying around, as there is risk, that children or pets swallow them.
- Batteries must not be dismantled, short-circuited or thrown into fire. Never recharge non-rechargeable batteries. There is a risk of explosion!

Connection and installation



The wireless wall switch is only intended for use in dry indoor locations. Make sure that cables or wires are not damaged when drilling or bolting in place.

- Lift the front plate of the radio wall switch (e.g. using a screw driver) carefully and remove it (see figure to the right).
- Remove the mounting plate. The mounting plate of the radio wall switch is attached to the electronic component of the radio wall switch with 4 clips (see figure to the right).
- The mounting plate disposes of the mounting holes (see figure to the right). Use the mounting plate to mark the mounting holes on the wall.
- Drill the mounting holes.
- Fix the mounting plate with suitable installation material to the desired mounting location.
- Fasten the electronic component of the radio wall switch to the mounting plate.
- Insert a 12V-battery (type: 27A) into the battery compartment of the radio wall switch with the correct polarity.
- Attach the front plate to the wireless wall switch.



Programming of a suitable radio receiver for the radio wall switch

- Switch on the power supply of the radio wall switch. Set the radio receiver to the programming mode. Observe the operating manual of the radio receiver.
- Activate button ON (=“I”) of the radio wall switch.
- The programming has been completed successfully.

→ In order to delete a radio wall switch from a radio receiver, observe the operating manual of the radio receiver.

Activating / deactivating the electrical devices

In order to activate the programmed radio receiver briefly press button “I” of the radio wall switch once. In order to deactivate the radio receiver briefly press button “O” once.

The dimmer function of the radio wall switch

The dimmer function can only be used together with a suitable dimmer.

- Turn on the dimmer by briefly pressing the “I” button on the radio wall switch once.
- Press the “I” button on the wall transmitter again. The dimmer function is activated.
- Press the “I” button again. The dimmer function is deactivated.

Range

- With optimal conditions, the range of the radio signals is up to 70 m.

→ This value, however, is the so-called “open space range” (the range when transmitter and receiver are visible to each other, without interfering influences).

In practical operation, however, there are walls, ceilings of rooms etc. between the transmitter and the receiver, which reduce the range accordingly.

Due to the different influences on the radio transmission, no specific range can be guaranteed.

However, trouble-free operation is usually possible in a detached house.

The range can sometimes be limited considerably by:

- Walls, reinforced concrete ceilings
- Coated/metallised insulated glass
- Proximity to metal & conducting objects (e.g. radiators)
- Proximity to human bodies
- Broadband interferences, e.g. in residential areas (DECT telephones, mobile phones, radio-controlled headphones, radio-controlled speakers, radio-controlled weather stations, baby phones etc.)
- Proximity to electric motors, transformers, power-supply units, computers
- The proximity to improperly shielded or uncovered operating computers or other electric appliances

Care and cleaning



Besides battery replacement, the product is maintenance-free. Never open/dismantle it.

- Only clean the product with a soft, clean, dry cloth.
- Never use aggressive cleaning agents or chemical solutions since these might damage the surface of the casing or impair the operation.

Declaration of Conformity (DOC)

Conrad Electronic SE, Klaus-Conrad-Straße 1, D-92240 Hirschau hereby declares that this product conforms to the 2014/53/EU directive.



Click on the following link to read the full text of the EU declaration of conformity: www.conrad.com/downloads

Select a language by clicking on a flag symbol and enter the product order number in the search box. You can then download the EU declaration of conformity in PDF format.

Disposal

a) Product



Electronic devices are recyclable waste and must not be disposed of in the household waste. At the end of its service life, dispose of the product according to the relevant statutory regulations.

Remove any inserted batteries and dispose of them separately from the product.

b) Batteries



You as the end user are required by law (Battery Ordinance) to return all used batteries. Disposing of them in the household waste is prohibited.

Contaminated batteries are labelled with this symbol to indicate that disposal in the domestic waste is forbidden. The designations for the heavy metals involved are: Cd = Cadmium, Hg = Mercury, Pb = Lead (name on batteries, e.g. below the trash icon on the left).

Used batteries can be returned to collection points in your municipality, our stores or wherever batteries are sold.

You thus fulfil your statutory obligations and contribute to the protection of the environment.

Technical data

Power supply1x 12V battery, type “27A”

Transmission frequency433.05 - 434.79 MHz

Rangemax. 70 m (open space, see chapter “Range”)

Transmission power4.98 dBm

Internal LEDLights up briefly, when the buttons are used

Operating temperature0 to +35 °C

Dimensions (L x W x D)approx. 80 x 80 x 14 mm

Weightapprox. 53 g (excl. batteries)

This is a publication by Conrad Electronic SE, Klaus-Conrad-Str. 1, D-92240 Hirschau (www.conrad.com).

All rights including translation reserved. Reproduction by any method, e.g. photocopy, microfilming, or the capture in electronic data processing systems require the prior written approval by the editor. Reprinting, also in part, is prohibited. This publication represent the technical status at the time of printing.

Copyright 2019 by Conrad Electronic SE. *1761735_V2_0419_02_mxs_m_en