

sygonix®

Operating Instructions
Wireless Motion Detector RSL
Item No. 1761752

CE

Intended use

This wireless motion detector serves to switch a corresponding receiver (e.g. wireless power socket, wireless external power socket switch, etc.) on or off. The mount dimmer has a horizontal movement detection range of 90° (max. detection range up to 8 metres). The movement detection range can be limited with the diffuser lens included in the delivery. Moreover, the activation duration upon movement detection (6 s, 15 s, 1 min, 5 min) and the brightness sensitivity can be adjusted.

The wireless motion detector is only intended for use in dry indoor locations.

It is powered by 2 x 1.5 V batteries (type: AAA).

All the safety and operating instructions in this manual must be followed carefully. These instructions not only protect the device but, in particular, your health. Please read the entire operating manual before using the product.

This product complies with the applicable National and European requirements. All names of companies and products are the trademarks of the respective owner.

All rights reserved.

Up-to-date operating instructions

Download the latest operating instructions at www.conrad.com/downloads or scan the QR code shown. Follow the instructions on the website.

Delivery Contents

- Motion detector
- 2 x 1.5 V type-A batteries
- Operating instructions



Safety instructions



The warranty will be void in the event of damage caused by failure to observe these safety instructions. We do not assume any liability for any consequential damage!

Nor do we assume liability for damage to property or personal injury caused by improper use or failure to observe the safety instructions. The warranty will be null and void in such cases.

a) General

- The unauthorised conversion and/or modification of the product is inadmissible because of safety and approval reasons.
- Do not use this product in hospitals or medical institutions. Although the product emits only relatively weak radio signals, these may lead to the malfunction of life-support systems. The same may possibly be the case in other areas.

- The wireless motion detector is powered by 2 x 1.5 V micro batteries (type: AAA).
- The product is not a toy and must be kept out of the reach of children. Therefore, be especially careful when children are around.
- Never expose the motion detector to extremely high or extremely low temperatures, humidity or vibrations.
- Do not leave packing materials unattended. They may become dangerous playthings for children.
- Handle the product with care, it can be damaged by impacts, blows, or accidental drops, even from a low height.

b) Batteries

- Batteries should be kept out of the reach of children.
- Please pay attention to the correct polarity (plus/+ and minus/-) when inserting the battery.
- Do not leave batteries lying around in the open; there is a risk of them being swallowed by children or domestic animals. If swallowed, consult a doctor immediately.
- Leaking or damaged batteries can lead to caustic burning of the skin. Therefore, use suitable protective gloves.
- Make sure that batteries is neither short-circuited nor thrown into a fire. There is a risk of explosion!
- Do not recharge normal batteries. There is a risk of explosion! Only charge rechargeable batteries that are intended for this purpose; use a suitable battery charger.
- Remove the batteries when not in use over long periods (e.g., storage). Aging batteries may leak, which might cause dam-

age to the product and loss of guarantee/warranty!

- For environment friendly disposal of batteries and rechargeable batteries, please read the chapter "Disposal".
- Because rechargeable batteries have a lower voltage (rechargeable battery = 1.2 V battery = 1.5 V), we recommend using high-quality alkaline batteries for the wireless motion sensor to ensure long and safe operation.

c) Handling

- The wireless motion detector must not get damp or wet.
- Avoid the following unfavourable environmental conditions in the during use and during transportation:
 - Humidity and dampness may cause damage to the motion detector.
 - Direct sunlight
 - Extreme cold or heat
 - Dust or flammable gases, fumes or solvents
 - Strong vibrations
 - Strong magnetic fields such as those found in the vicinity of machinery or loudspeakers

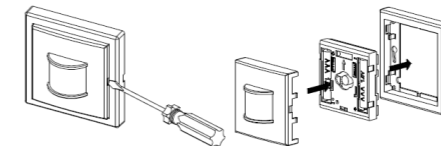
- Ensure that the enclosure of the entire product is neither damaged nor destroyed. Never disassemble the product! Except for changing the battery, there are no serviceable parts inside.
- Check the product for damage before use!
- If you notice any damage, do not use the product any longer!
- Safe operation must be presumed to be no longer possible:
 - if the device is visibly damaged

- if the device no longer works
- if the device was stored under unfavourable conditions for a long period of time
- the device was exposed to extraordinary stress caused by transport.

Description of functions

This motion detector responds to heat radiation, which is emitted by objects entering the detection area of the motion detector. The motion detector must "see" the area it is to keep under surveillance. Heat radiation travels in straight lines but is obstructed, for example, by glass or other fixed objects. Before mounting, therefore, pay attention to this, or other problem sources. If the detection area of the motion detector is entered, the programmed receiver (e.g. wireless power socket) is activated. The activation duration can be adjusted at the motion detector. In addition, the ambient brightness, at which the motion detector shall be activated, can be adjusted.

Installation



When selecting the position for installing the motion detector, please note that it must not be subjected to direct sunlight, humidity, vibrations, dust, heat or cold. This can lead to faulty activation, defects or functional impairment.

The motion detector is only suitable for use in dry, closed indoor locations.

Do not place devices with strong magnetic or electric fields, such as mobile phones, electric motors, etc. in the immediate vicinity.

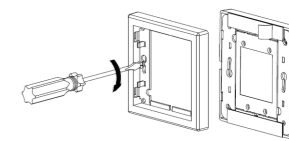
Recommended installation height: 1 to 1.5 metres



To ensure optimal motion detection, the motion detector must be placed so that the object to be detected does not approach the motion detector directly but passes from left to right or vice versa.

Proceed as follows, to ensure the correct installation:

- Use a flat screw driver to remove the front plate with the diffuser lens.
- The mounting plate at the back has two mounting holes. Take the mounting plate and indicate the mounting holes at the intended mounting position.
- Drill the holes.
- Fix the mounting plate with suitable installation material.



- Insert the electronic component into the mounting plate.
- Attach the front plate with the diffuser lens (so that it engages).

Timer and brightness setup

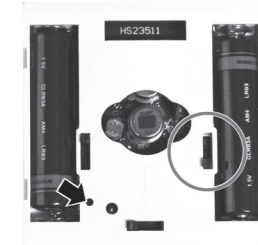
The motion detector has two sliding switches for adjustment of activation duration and brightness sensitivity.

Slide switch for activation duration:	Slide switch: brightness sensitivity:
Explanation: 6 s: Activation duration of 6 seconds 15 s: Activation duration of 15 seconds 1 m: Activation duration of 1 minute 5 m: Activation duration of 5 minutes	Explanation: The closer the sliding switch is positioned to the sun symbol, the brighter the ambient area upon activation due to motion detection.

Inserting/replacing the batteries

- Use a flat screw driver to remove the front plate with the diffuser lens.
- Remove the used batteries, if necessary.
- Insert 2 x 1.5 V micro batteries observing the correct polarity (Type: AAA) into the battery compartment.
- Attach the front plate with the diffuser lens (so that it engages).

Programming a receiver



- First, move the slide switch for the learning code (see circle in the picture) to the position "Learning Code". This should be pre-set already in the basic setting of the motion detector.
- The other 3 switch positions are not needed.
- Insert 2 type AAA/micro batteries, if not already done.

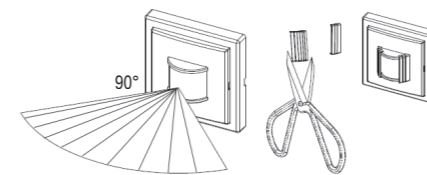
- Then initiate the learning mode, starting with the receiver that should learn the motion (e.g., for a wireless switch socket press the button "Learning Code" until the LED on the button starts flashing).
- Now, for example, using a toothpick, press the button „Learning" on the motion sensor (see arrow in the picture) for about 2-3 seconds.
- The LED on the receiver (e.g., a wireless socket switch) will go out, which indicates that the radio signal of the motion sensor has been detected and has learned that now.

→ If the receiver does not recognize the motion detector, check whether the batteries in the motion sensor are inserted correctly. Make sure that the receiver is in learning mode, while holding down the button "Learning" on the motion sensor.

- If the motion sensor is for instance intended to control a further (second, third....) wireless socket switches, please repeat the steps described above. That way the motion sensor can activate several RSL receivers.

Limiting the motion detection range

The movement detection range can be limited with the diffuser lens included in the delivery. The cover can be fitted e.g. with scissors. Then the diffuser lens cover is attached to the diffuser lens.



Maintenance and care

The product does not require any maintenance and should never be opened or disassembled for any reason.

Clean the product with a soft, clean and dry cloth. Never use aggressive cleaning agents or chemical solutions since these might damage the surface of the casing or impair the operation.

Transmission range

The transmission range of the radio signals between the wireless motion detector and the corresponding receiver is up to 70m under optimum conditions.

→ This value, however, is the so-called "open space range" (the range the transmitter and receiver are visible to each other, without interfering influences).

In practical operation, however, there are walls, ceilings of rooms etc. between the transmitter and the receiver, which reduce the range accordingly.

Due to the different influences on the radio transmission, no specific range can be guaranteed.

However, trouble-free operation is usually possible in a detached house.

The coverage can partly be limited considerably by:

- walls, reinforced concrete ceilings
- coated/metallised insulated glass
- proximity to metal & conducting objects (e.g. radiators)
- proximity to human bodies
- Broadband interferences, e.g. in residential areas (DECT telephones, mobile phones, radio-controlled headphones, radio-controlled speakers, radio-controlled weather stations, baby phones etc.)
- Proximity to electric motors, transformers, power-supply units, computers
- The proximity to improperly shielded or uncovered operating computers or other electric appliances

Declaration of Conformity (DOC)

Conrad Electronic SE, Klaus-Conrad-Straße 1, D-92240 Hirschau hereby declares that this product conforms to the 2014/53/EU directive.

→ Click on the following link to read the full text of the EU declaration of conformity: www.conrad.com/downloads

Select a language by clicking on a flag symbol and enter the product order number in the search box. You can then download the EU declaration of conformity in PDF format.

Disposal

a) Product



Electronic devices are recyclable waste and must not be disposed of in the household waste. At the end of its service life, dispose of the product in accordance with applicable regulatory guidelines.

Remove any inserted batteries and dispose of them separately from the product.

b) Batteries



You as the end user are required by law (Battery Ordinance) to return all used batteries. Disposing of them in the household waste is prohibited.

Contaminated batteries are labeled with this symbol to indicate that disposal in the domestic waste is forbidden. The designations for the heavy metals involved are: Cd = Cadmium, Hg = Mercury, Pb = Lead (name on batteries, e.g. below the trash icon on the left).

Used batteries can be returned to collection points in your municipality, our stores or wherever batteries are sold.

You thus fulfill your statutory obligations and contribute to the protection of the environment.

Technische Daten

Power supply	2x 1.5 V type-A batteries
Transmission power.....	<10 dBm
Transmission distance.....	max. 30 m (line of sight)
Transmission frequency.....	433.05 - 434.79 MHz
Motion detection angle	90° (horizontal)
Detection range	up to 8 metres
Operating temperature	0 °C to +35°C
Weight without batteries	approx. 56 g
Dimensions (L x W x H)	approx. 80 x 80 x 28 mm

This is a publication by Conrad Electronic SE, Klaus-Conrad-Str. 1, D-92240 Hirschau (www.conrad.com).

All rights including translation reserved. Reproduction by any method, e.g. photocopy, microfilming, or the capture in electronic data processing systems require the prior written approval by the editor. Reprinting, also in part, is prohibited. This publication represent the technical status at the time of printing.

Copyright 2020 by Conrad Electronic SE.

1761752_v1_0220_02_dh_m_en