

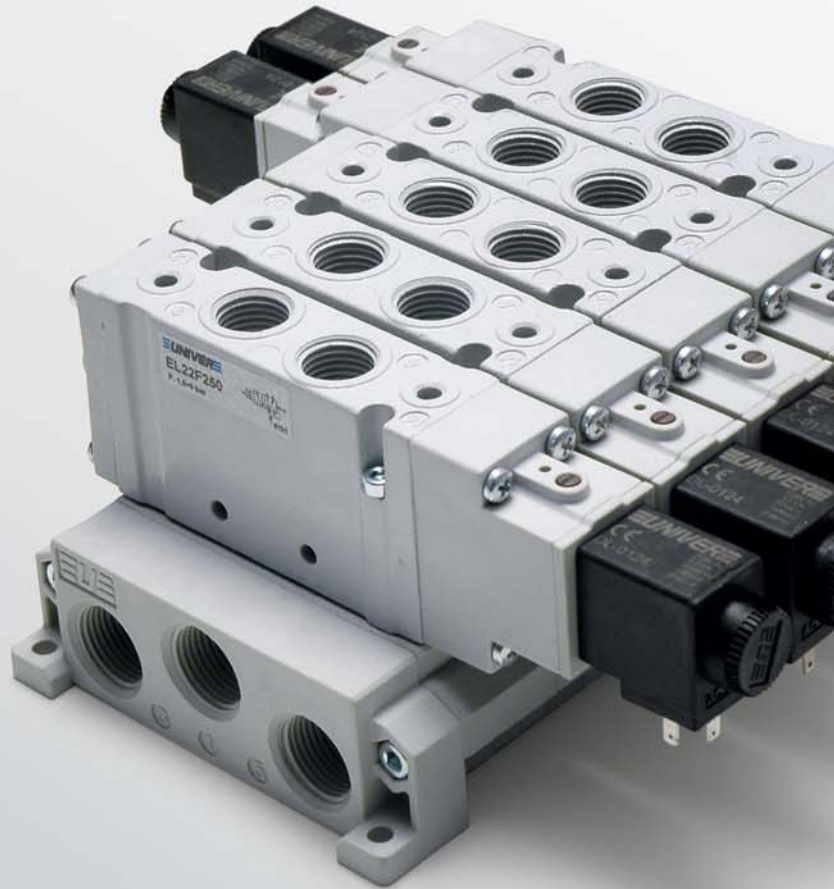
ESSENTIAL

Valves

EL series

18 mm - G1/8

22 mm - G1/4





ESSENTIAL Valves EL series 18 mm (G1/8) 22 mm (G1/4)

HIGH FLOW RATE

800 NI/min (G1/8) 1700 NI/min (G1/4)

REDUCED DIMENSIONS

18 mm (G1/8) 22 mm (G1/4)

COMPLETE SOLUTION

5/2 Monostable/Bistable

5/3 Closed centers/Open centers/Pressurized centers

3/2 NC+3/2 NC

3/2 NC+3/2 NO

3/2 NO+3/2 NO

STRONG

Metallic body

G1/8



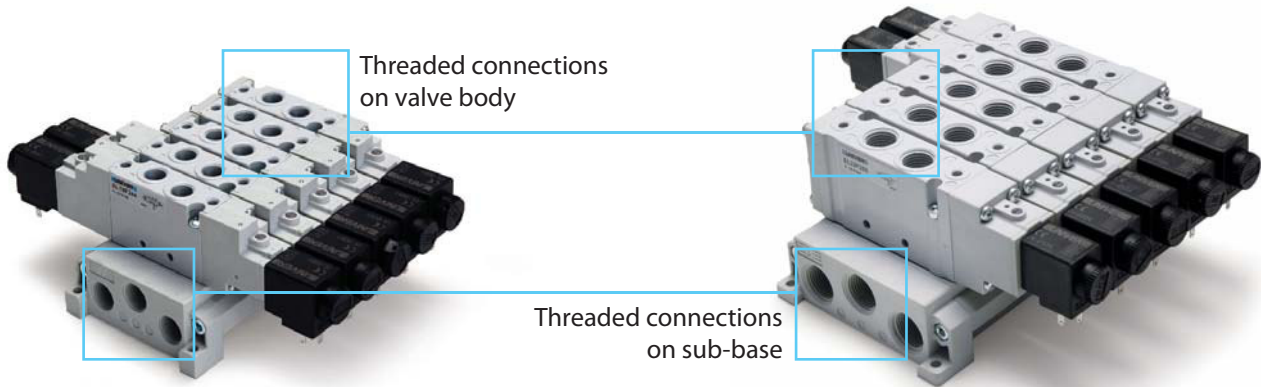
G1/4



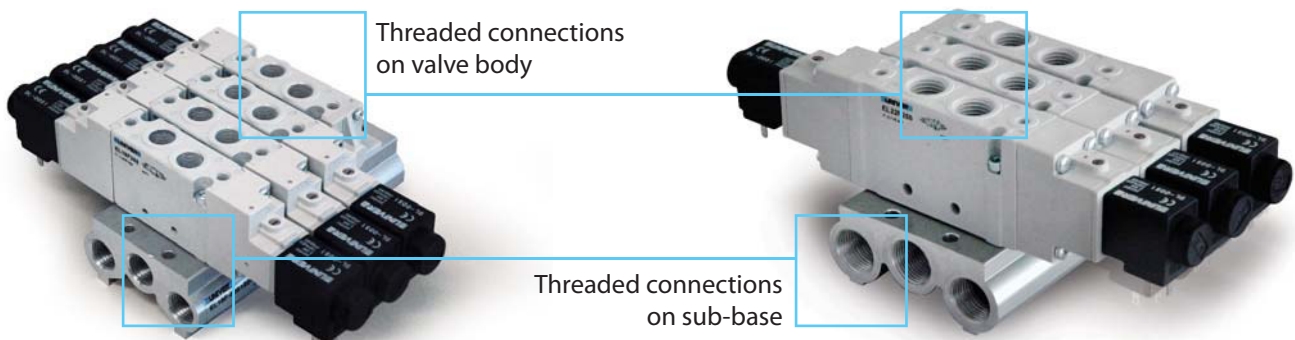
EL18F G1/8

EL22F G1/4

Modular sub-base in technopolymer

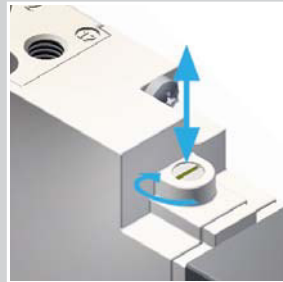


Aluminum Sub-base

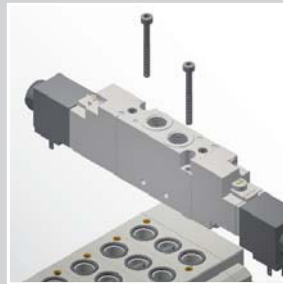




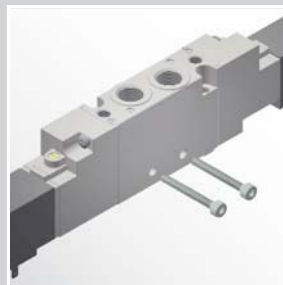
**Interchangeable
U6 coil**
12 - 24 V DC
24 - 110 - 220 V AC



**Manual override
(standard)**
1/2 position impulse



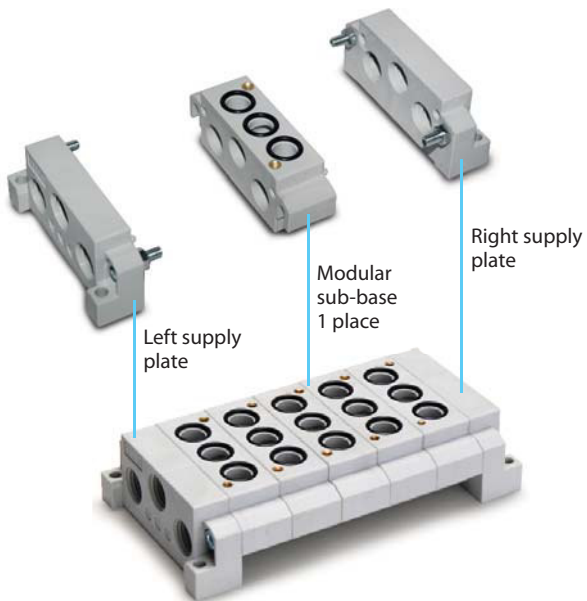
Sub-base mounting
Easy installation by means
of 2 screws



Individual mounting
Side holes on valve body



**Traditional UNIVER
technology**
The dynamic spool
guarantees a long life and
reliability

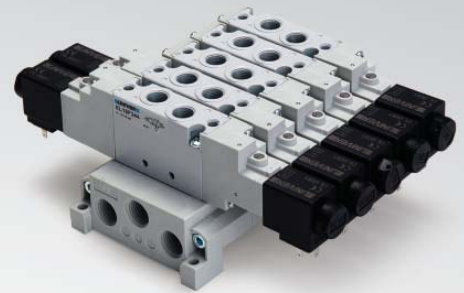


1 ÷ 10 positions



EL18F

ESSENTIAL Valves 18 mm - G1/8



TECHNICAL CHARACTERISTICS

Ambient temperature	-5 ÷ 50 °C
Fluid temperature	Max 50 °C
Fluid	filtered air 10 µm, with or without lubrication
Commutation system	spool
Ways/positions	5/2 - 5/3 - 3/2+3/2
Max pressure	8 bar (electrical override) 10 bar (pneumatic override)
Control	indirect electropneumatic, pneumatic
Return	mechanical spring, pneumomechanical spring, pneumatic amplified, electrical amplified
Connections	G1/8
Nominal flow rate (Nl/min)	800 (5/2) 720 (5/3) 720 (3/2+3/2)

CONSTRUCTIVE CHARACTERISTICS

Valve body	zamak
Seals	nitrile rubber
Actuators	technopolymer
Sub-base	technopolymer/aluminum
Spool	aluminum

ELECTRICAL CHARACTERISTICS

Electropilot	electropilot U6
Coil	DL series
Voltage	12 V DC - 24 V DC - 24 V AC - 48 V AC - 110 V AC - 230 V AC
Power consumption	2,5 W 5 VA
Protection degree	IP65
Manual override	impulse 1/2 positions

CODIFICATION KEY

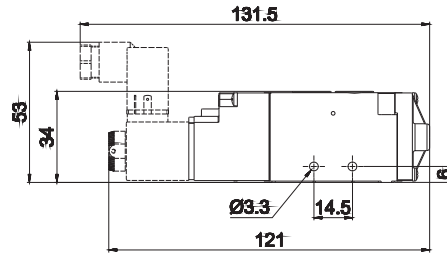
E	L	1	8	F	2	5	0	
		1	2	3	4	5		

1 Series EL18F = ESSENTIAL Valves 18 mm - G1/8	2 Type 2 = 5/2 3 = 5/3 c.c. 4 = 5/3 o.c. 5 = 5/3 p.c. 6 = 3/2+3/2 NC-NC 7 = 3/2+3/2 NC-NO 8 = 3/2+3/2 NO-NO
--	---

3 Control 14 3 = Pneumatic amplified 5 = Electrical amplified DC/AC	4 Return 12 0 = Pneumomechanical spring 1 = Mechanical spring 3 = Pneumatic amplified 5 = Electrical amplified DC/AC	5 Variant D = External pilot supply
--	---	---

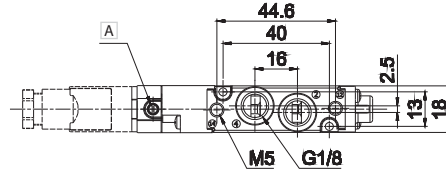
c.c. = closed centers o.c. = open centers p.c. = pressurized centers

Single electrical impulse



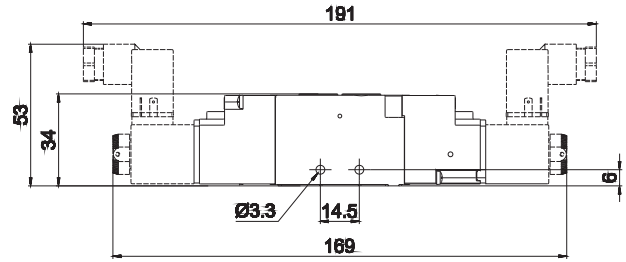
A Manual override

2 - 4 = Use
14 = Control
12 = Return



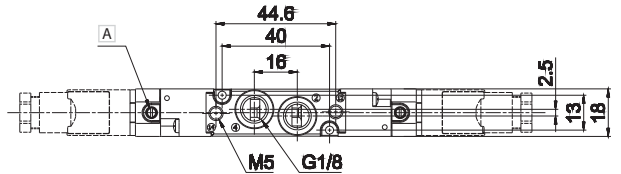
Symbol	Type	Control	Return	Pressure bar	Weight Kg	Part No.
	5/2	electrical amplified	pneumomechanical spring	1,9÷8	0,168	EL18F250
	5/2	electrical amplified	mechanical spring	2-8	0,168	EL18F251

Double electrical impulse



A Manual override

2 - 4 = Use
14 = Control
12 = Return

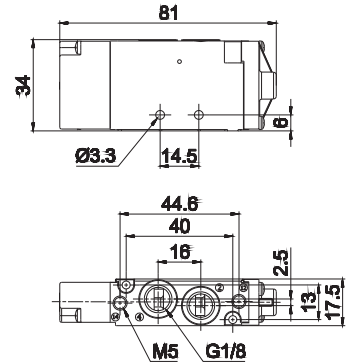


Symbol	Type	Control	Return	Pressure bar	Weight Kg	Part No.
	5/2	electrical amplified	electrical amplified	1-8	0,192	EL18F255
	5/3 c.c.	electrical amplified	electrical amplified	1,9÷8	0,192	EL18F355
	5/3 o.c.	electrical amplified	electrical amplified	1,9÷8	0,192	EL18F455
	5/3 p.c.	electrical amplified	electrical amplified	1,9÷8	0,192	EL18F555
	3/2 NC + 3/2 NC	electrical amplified	electrical amplified	1,5÷8	0,192	EL18F655
	3/2 NC + 3/2 NO	electrical amplified	electrical amplified	1,5÷8	0,192	EL18F755
	3/2 NO + 3/2 NO	electrical amplified	electrical amplified	1,5÷8	0,192	EL18F855

c.c. = closed centers o.c. = open centers p.c. = pressurized centers

Solenoid valves are supplied without coil and connector

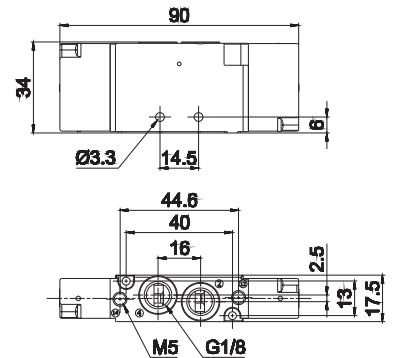
Single pneumatic impulse



2 - 4 = Use
14 = Control
12 = Return

Symbol	Type	Control	Return	Pressure bar	Weight Kg	Part No.
	5/2	pneumatic amplified	pneumomechanical spring	1,9÷10	0,149	EL18F230
	5/2	pneumatic amplified	mechanical spring	2÷10	0,149	EL18F231

Double pneumatic impulse

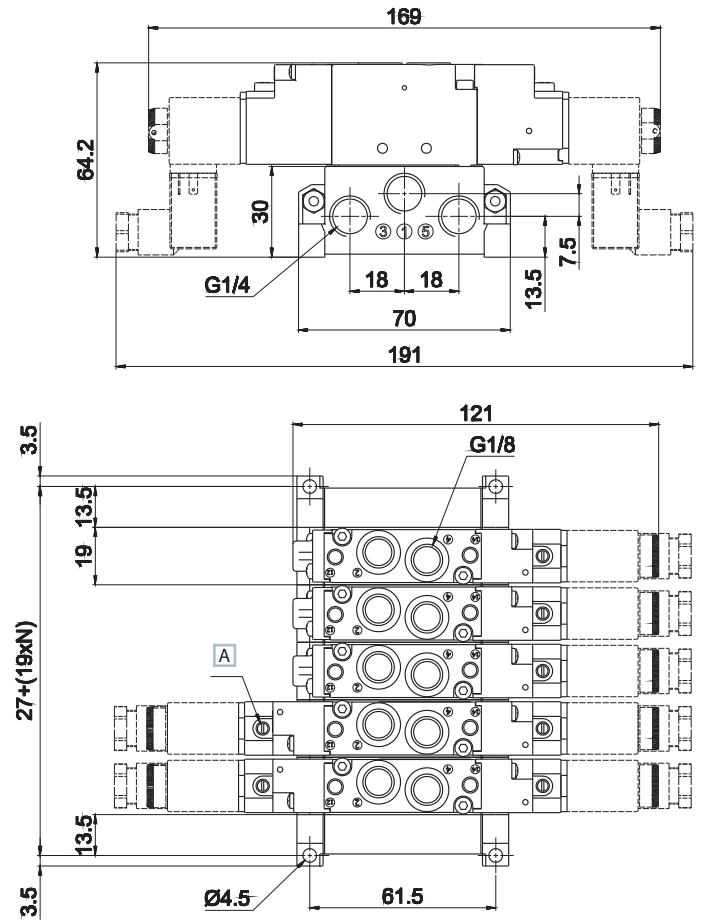
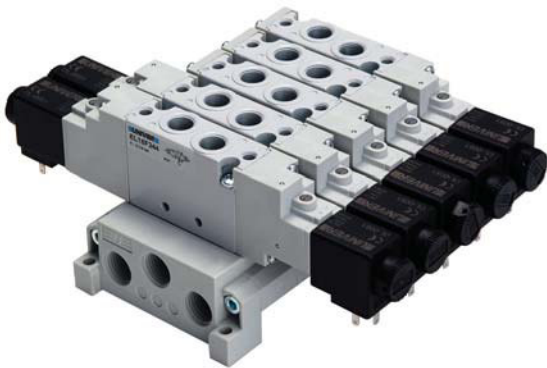


2 - 4 = Use
14 = Control
12 = Return

Symbol	Type	Control	Return	Pressure bar	Weight Kg	Part No.
	5/2	pneumatic amplified	pneumatic amplified	0,7÷10	0,154	EL18F233
	5/3 c.c.	pneumatic amplified	pneumatic amplified	1,9÷10	0,154	EL18F333
	5/3 o.c.	pneumatic amplified	pneumatic amplified	1,9÷10	0,154	EL18F433
	5/3 p.c.	pneumatic amplified	pneumatic amplified	1,9÷10	0,154	EL18F533
	3/2 NC + 3/2 NC	pneumatic amplified	pneumatic amplified	1,5÷10	0,154	EL18F633
	3/2 NC + 3/2 NO	pneumatic amplified	pneumatic amplified	1,5÷10	0,154	EL18F733
	3/2 NO + 3/2 NO	pneumatic amplified	pneumatic amplified	1,5÷10	0,154	EL18F833

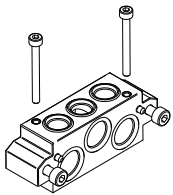
c.c. = closed centers o.c. = open centers p.c. = pressurized centers

Modular sub-base in technopolymer

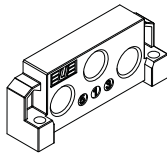


- A** Manual override
- 1 = Supply
- 2 - 4 = Use
- 3 - 5 = Exhaust
- 14 = Control
- 12 = Return
- N = Number of valve places

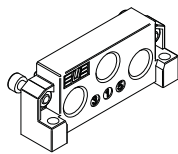
EL18SF300 EL18SF515 EL18SF516 EL18SF518 EL18SF560 EL18SF570



Sub-base 1 place
Screws and seals are included



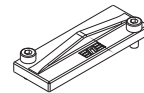
Left supply plate G1/4



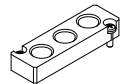
Right supply plate G1/4
Screws and seals are included



Fixing spring for DIN rail
Screws are included



Closing plate for unused
valve place
Screws are included



Intermediate supply plate
Screws are included

Coil and connector

■ Coil



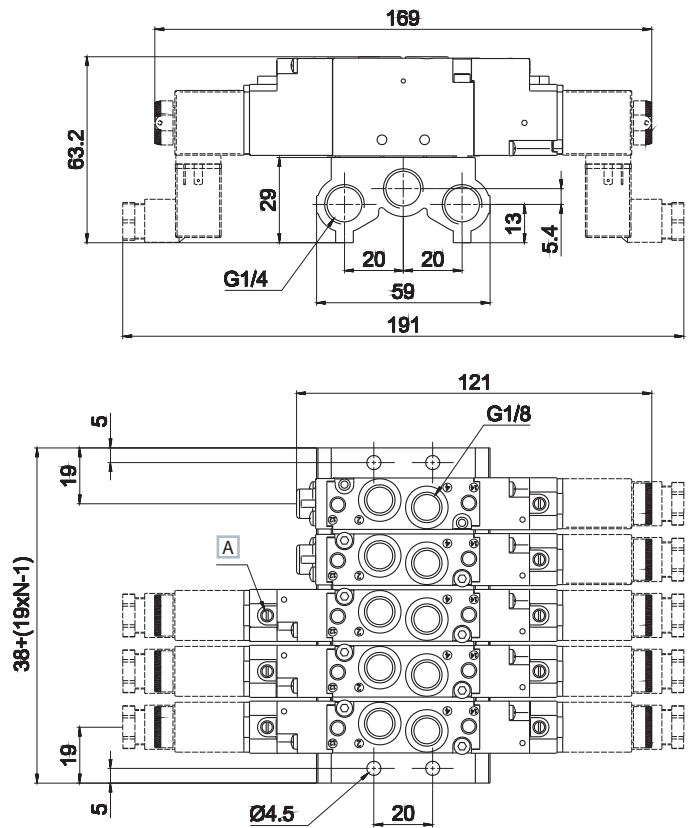
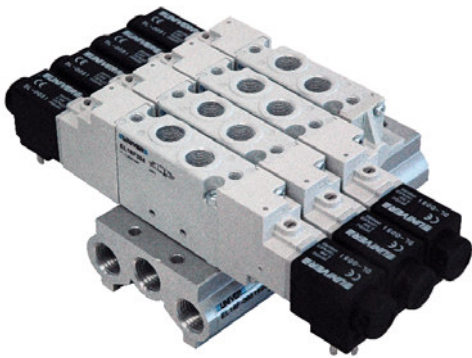
- DL-0050 12 V DC 2,5 W
- DL-0051 24 V DC 2,5 W
- DL-0106 24 V AC 50/60 Hz 5 VA
- DL-0108 110 V AC 50/60 Hz 5 VA
- DL-0124 230 V AC 50/60 Hz 5 VA

■ Connector



AM-5109

Aluminum sub-base



Part No.	No. Positions
EL18SF900-02	2
EL18SF900-03	3
EL18SF900-04	4
EL18SF900-05	5
EL18SF900-06	6
EL18SF900-07	7
EL18SF900-08	8
EL18SF900-09	9
EL18SF900-10	10

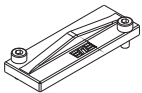
The sub-base includes gaskets and screws for mounting valves

A Manual override

- 1 = Supply
- 2 - 4 = Use
- 3 - 5 = Exhaust
- 14 = Control
- 12 = Return

N = Number of valve places

EL18SF560



Closing plate for unused valve place
Screws are included