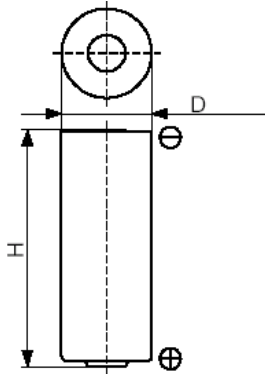


Cell Type CR17450E-R Specifications



Nominal Voltage (V)		3
Nominal Capacity (mAh) ^{*1}		2400
Standard Discharge Current (mA)		5
Max. Discharge Current (mA)	Continuous ^{*2}	800
	Pulse ^{*3}	2500
Operating Temperature Range (°C)		-40 ~ +85
Max. Dimensions (mm)	Diameter (D)	17.0
	Height (H)	45.0
Weight (g)		23

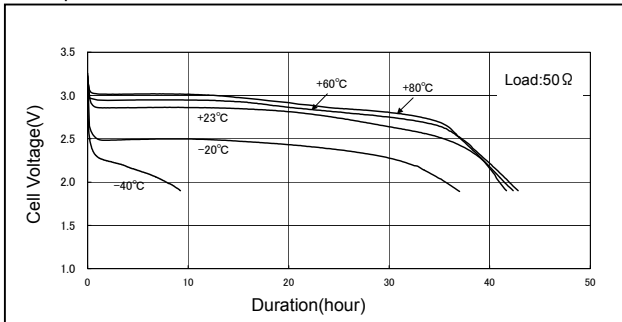
*1 Nominal capacity is determined at an end voltage of 2.0V when the battery is allowed to discharge at a standard current level at +23°C.

*2 Current value is determined to be the level at which 50% of the nominal capacity is obtained with an end voltage of 2.0V at +23°C.

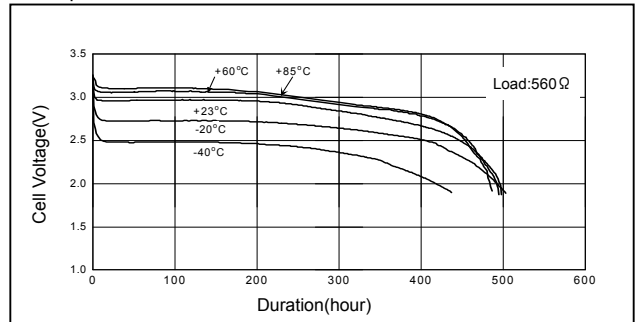
*3 Current value for obtaining 1.0V cell voltage when pulse is applied for 15 seconds at 50% discharge depth (50% of the nominal capacity) at +23°C.

Typical Characteristics

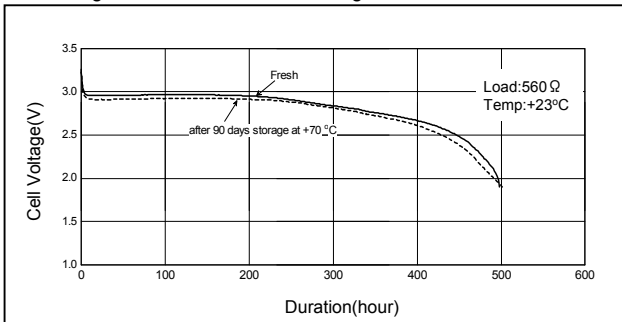
Temperature Characteristics of CR17450E-R



Temperature Characteristics of CR17450E-R



Discharge Characteristics after storage of CR17450E-R



Discharge Load vs. Cell Capacity of CR17450E-R

