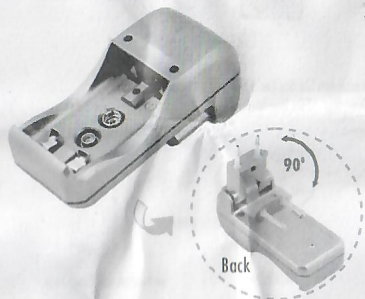


# Camelion®

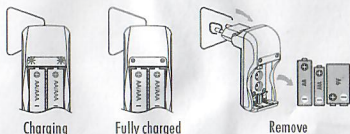
## Travel Charger

Model No.: BC1001A



### OPERATING INSTRUCTIONS

3. When the batteries are fully charged the LED will turn off. Disconnect the charger from the power source and remove the batteries. This prevents overcharging the batteries and reduces wear and tear on the charger.



For best results and maximum efficiency please use only Camelion chargers and batteries.

### For your safety

To prevent damage to this charger or injury to yourself or to others, please read the following operating instructions before usage. Keep these operating instructions for your reference when needed.

### ⚠ CAUTIONS

1. This charger is for indoor use only. Always keep it dry and avoid exposure to even light moisture.
2. This charger is intended for use with CAMELION rechargeable Nickel Metal Hybride (Ni-MH) and Nickel Cadmium (Ni-CD) batteries.
3. Do not charge non-rechargeable batteries (e.g. zinc-carbon, alkaline, lithium), as this may cause personal injury, and damage to the charger.
4. Do not operate this charger with a damaged plug or cable.
5. Do not charge different types of batteries and/or capacities together, unless the charger has appropriate individual charging channels.
6. Do not repair this charger and/or the batteries under any circumstances.
7. This appliance is not intended for use by persons (including children) with reduced physical, sensory or mental capabilities, or lack of experience and knowledge, unless they have been given supervision or instruction concerning use of the appliance by a person responsible for their safety.
8. Children should be supervised to ensure that they do not play with the appliance.

### Care & Troubleshooting Tips:

- Children should use this product only under adult supervision.
- Clean the charger with a clean dry cloth. Keeping the metal contacts clean will also help maintain performance.
- If the LED status indicator does not light up make sure that the unit is properly plugged into the wall. If the indicator still fails to light up or flashes the battery may be defective, improperly inserted or the presence of a short circuit. **If a short circuit is suspected please do not attempt to repair the unit yourself and bring the unit to an authorized Camelion repair center.**
- When charging different capacity/type batteries, the charging time should be calculated based on the charging times of similar capacity/type batteries. Refer to the appropriate charging table.
- Correctly insert the batteries and avoid reversing the +/- polarities.
- The charger is intended for use with Ni-MH/Ni-CD batteries only. Charging other battery types may cause explosions, breakage, personal injury or property damage.
- Incorrect use may result in electric shock
- For indoor use only. Keep away from humid and hot places.
- Do not disassemble or reassemble the charger.
- During use in your device, avoid mixing batteries of different sizes and capacities.

### Introduction

Congratulations on your purchase of a Camelion Product. The Camelion Travel Charger offers you the following convenient functions.

#### Charges 1 to 2 AA/AAA, 1 9V Ni-MH/Ni-Cd batteries

#### Slim and Portable

The slim design and foldable plug allows easy transport and usage when one is traveling.

#### 3 Independent Charging Channels

Allows one to choose to simultaneously charge any combination of AA, AAA and 9V batteries

#### Trickle Charge Feature

#### 12 Hours Timer Control Protection

After 12 hours charging, the main Charge current is cut off.

#### AA/AAA Reverse Polarity Protection

To help prevent inserting batteries the wrong way and thus damaging the batteries, the unit or yourself, the unit is specially designed to prevent incorrect battery polarity insertion.

#### 3 LED Indicators

The red LED light up to indicate charging is in progress. The LED will turn off when charging is complete.

For additional inquiries, comments or to explore Camelion charger solutions, visit our website at [www.camelion.com](http://www.camelion.com) or email us at [info@camelion.com](mailto:info@camelion.com)

### How to Use

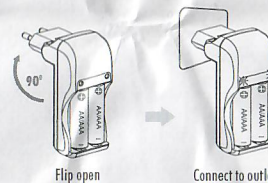
The Travel Charger will charge AA,AAA and 9V batteries.

1. Insert Batteries.



2. Connect the unit to a power outlet.

Red LEDs will turn on to indicate charging is in progress.



### Specifications

Input: 100-240V ~ 50Hz/60Hz 4W MAX

Output: 2 x (1.4V ~ 200mA) AA/AAA Size

1 x (9V ~ 25mA) 9V Size (BC1001A)

Operating Temperature: 0°C - + C 40°C, 25°C Optimal

Storage Temperature: -20°C - + 65°C, 25°C Optimal

### Some Standard Charging Times\*

Batteries types&sizes	Charging time (Hours)
Ni-MH AA 2000mAh	12
Ni-MH AA 1500mAh	11
Ni-MH AAA 1000mAh	5.5
Ni-MH 9V 200mAh	11

\*These charging times are only a small selection of the batteries you can charge up. Please refer to the Camelion charging table on [www.camelion.com](http://www.camelion.com) for a full list of battery capacities and charging times.

Camelion © 2007  
BC1001A201706GB(S007)

