



BL-1000GT

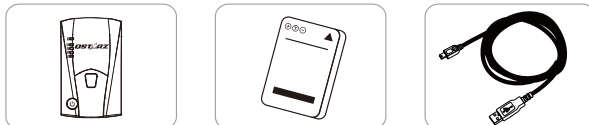
GNSS Support



Quick Start Guide

01 What's in the box

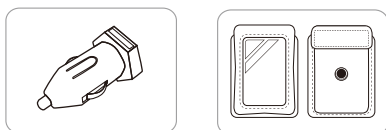
Please make sure you have everything included in the package



BL-1000GT unit

Li-Ion Rechargeable Battery

Micro USB cable



Car Charger

Leather Case



Product operation guide and download info, please find the Download Index file stored in the memory of BL-1000GT and you can read or install accordingly under internet connection.

02 Installing the Battery

- Remove the back cover by pushing the battery cover release tab with your thumbnail.
- Insert the battery, and align the battery contacts with the terminals in the battery compartment.
- Place the back cover over the battery compartment, and press it downward until it clicks into place.



03 Charging the BL-1000GT

Please FULLY charge the BL-1000GT for the first time use by connecting the supplied Micro USB cable through computer or car's cigarette adaptor.

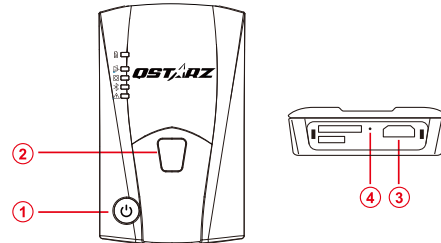


- Green LED On: On Charging
- Green LED Off: Fully Charged



Risk of explosion if Battery is replaced by an incorrect type. Dispose of used batteries according to the instructions.

04 BL-1000GT Function Buttons



- Power button:**
Press 3 seconds to power On/Off.
Press to show battery status.
(Top to down each LED indicates 20%.)
- POI(G Button) button:**
Press to record point of interest.
Press & hold 1 second to calibrate g-sensor.
- Micro USB Jack:**
Device charging/ Downloading/ Updating firmware.
- Reset Button:**
Shut down the device (Inside the rubber cover).

05 LED Indicators

LED symbol	LED Color	Status	Description
Power	Orange	Flashing	Low Power
	Green	On	Recharging under power off
	Off	N/A	1. Fully charged. 2. Device power off or sleep mode
Memory	Orange	Flash 3 times	POI pressed , POI(Point of Interest) is recorded
	Orange	Flash per 2 sec.	Low memory (less than 20% left)
	Orange	On	Memory is full or SD card error
	Off	N/A	1. Memory has adequate capacity 2. Device power off or sleep mode
GPS	Green	Flash	GPS fixed but not logging
	Green	On	GPS position is fixed, device is logging
	Off	N/A	1.GPS position not fixed 2.Memory is full 3.Device power off or sleep mode
Bluetooth	Blue	Flash	Searching for device
	Blue	On	Bluetooth connected
Alarm	Orange	On	1.GPS is not connected with satellite 2.Memory is full
	Orange	Flash	Device enter into sleep mode
	Off	N/A	1.GPS position is fixed 2.Device power off

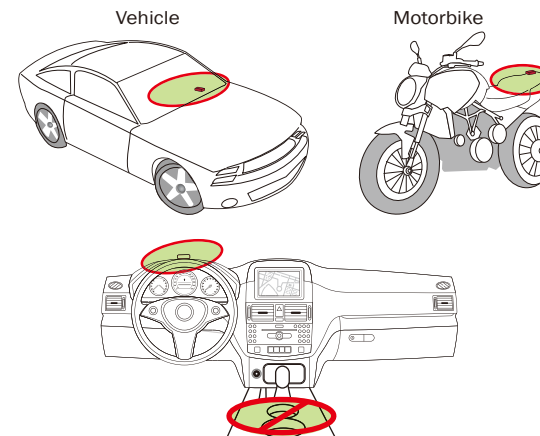
06 Beep Code

*Beep can be turned off from software -> Config GPS.

Status	Beep code	Description
Power On	1 short beep	1 short beep when device switch On.
Power Off / Sleep Mode	1 long and 1 short beep	1 long and 1 short beep when the device switch off.
Memory Full	3 long beep	3 long beep when the device is out of memory.
G-Sensor Calibration	2 Long beep	2 long beep with G-Sensor button being pressed.
POI button	3 short beep	3 short beep when POI button being pressed.
GPS fixed	2 short beep	2 short beep when GPS location is fixed.
Memory error	Long continuous beep	Micro SD Card error or is not detected.

07 Mount the BL-1000GT on Car or Motorcycle

Best location to install the External GPS Antenna:



08 Acquiring Satellite Signal

- Hold on Power button to power on BL-1000GT.
- Place the device outside under clear view of sky to acquire GPS signals.
- Acquiring GPS signals may take few minutes. The GPS LED is solid green when it starts logging data. The GPS LED flashes green when it has connected when GPS satellites.

09 Set up /Firmware Update

- All function must be set up before use. As following: time zone, start recording time, Bluetooth and Buzzer enabled.
- Download and extract the firmware from Qstarz web site <http://racing.qstarz.com/Download.html>
- Power off BL-1000GT and connect with computer via Micro USB cable.
- Copy the firmware file **FW.qst** to the root directory of BL-1000GT Micro SD card.
- Unplug the Micro USB cable, and firmware update will begin automatically. LEDs will light on alternately during the update process.
- Once firmware update is completed, the device will turn off automatically.

10 Product Compatibility

- BL-1000GT is compatible with most iOS and Android devices via the Qstarz BLE GPS View App.
- BL-1000GT is compatible with iOS and Android via the Qstarz BLE GPS View App. Exception for no brand and newest mobile phone.

* Download the Qstarz BLE GPS View APP on the App Store or Google Play.

11 QRacing APP (iOS version and Android version)



QRacing



Please download QRacing APP on App Store or Google Play. QRacing APP is a racing data analysis APP combining logged data with video overlay support. Read the operating guide on the manual of QRacing APP.

*Supported versions please refer to Qstarz website.

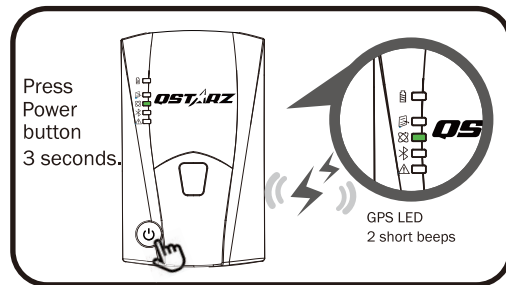
Please download the QRacing App to complete the QWS account of application and activation.

12 Start Racing

① Switch On BL-1000GT.

Please switch on BL-1000GT power and confirm Bluetooth of LED flashing for connection.

* The mobile phone photo is illustrated by iPhone only. The support OS and versions for QRacing APP, please refer to the description on Qstarz website.



② Confirm GPS gets fix.

③ Turn on your mobile device's Bluetooth feature iPhone Setting > General > Bluetooth > On Android phone Settings > Wireless & Networks > Bluetooth: On

Note

BL-1000GT will start to log once GPS get fix. When BL-1000GT power off, it will enter the saving process.

④ Start QRacing APP on your Mobile Phone.



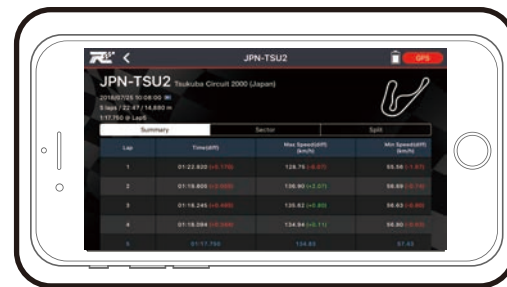
Note

Register a new account. Login and add your BL-1000GT in Setting Page of QRacing APP.

⑤ Start to real-time Racing.



⑥ View Analysis Data on your QRacing APP.



Note

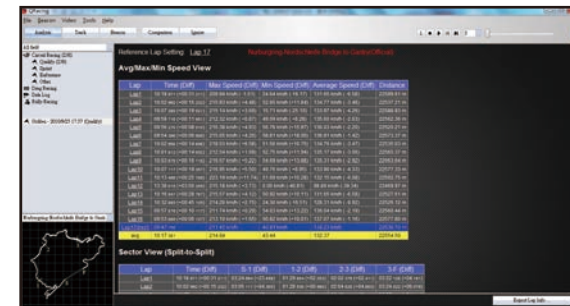
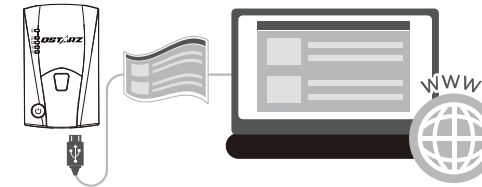
Picture Screens might be slightly varied according to different APP version. For detail operation, please refer to the operating guide on manual of QRacing APP.

13 Install QRacing Software

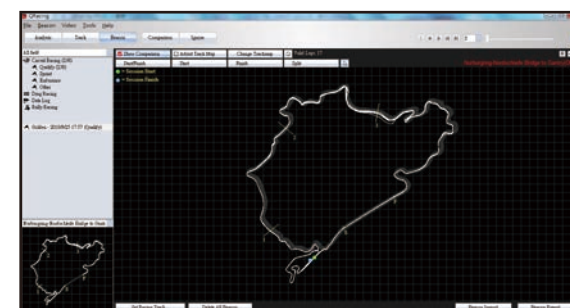
First make sure to power off your BL-1000GT device and connect it with Computer, and browse the root directory of BL-1000GT in My Computer. Find the "Download Index_BL-1000GT.html" file and click it with internet connection. A download webpage will pop-up, then click on the link and follow the on screen steps to install QRacing software and read related information. (For the first time use of QRacing, please input software key which is located at Qstarz warranty card.)

*QRacing lap timing analysis software is for PC Windows OS only.

*Read log to QRacing PC software, please make sure to turn off your BL-1000GT first.



Turn off the BL-1000GT and connect to your computer. Read log from device and QRacing will detect trackmap automatically to have further analysis.



QRacing beacon editor to set start/finish splits, adjust trackmap, or import/export beacons.



QRacing lap timing graph analysis and playback up to 3 laps.

*Read the detail operation on QRacing User Manual: Click Help > Users Manual

14 Product Specifications

- Adopt high sensitivity GNSS chip and 3-axis accelerometer
- Bluetooth LE 4.0 enabled device.
- Log rate up to 10Hz excellent for High speed racing (recording 1 waypoint per 0.1 second)
- POI button design to record your point of interest immediately
- 5 LED indications to view device status
- Device recognized as USB removable disk for data access with computer conveniently
- Case: Rugged, without water-resistant
- Power Supply: Rechargeable Lithium-Ion battery, 20 hours operation (typical use)
- Temperature: Operating -10~60°C/ Charging 0~45°C/ Storage -20~60°C

15 Product Care

- Please take out the battery and store it in dry/cool places when not use for a long period.
- If the device isn't used in temperature between -10°C ~ 60°C, its battery charging capability will decrease.
- Leave the device far from heat or high temperature environment. And also, do not expose your device in temperature higher than 145°F/60°C to prevent the inside battery from overheating, exploding or burning itself. The Lithium battery inside the device should be recycled.
- Do not attempt to open the device by yourself. Unauthorized hacking may damage the unit, and void your warranty.
- Micro SD Card error: If you encounter this error, please take micro SD card reader and plug-in your micro SD card. Use "SD Card Formatter" tool to execute Quick format to FAT32 format.