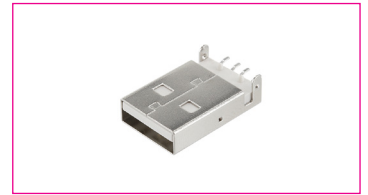


**SPECIFICATION:**

Operating Voltage (Max.):	250 Vac
Operating Current (Nom.):	1.5 A
Operating Temperature:	-55°C to 85°C
Insulation Resistance (Min.):	1000 MΩ
Contact Resistance (Max.):	30 mΩ
Dielectric Strength:	750 Vac
Insertion Force (Max.):	35 N
Extraction Force:	10 N



**MATERIAL:**

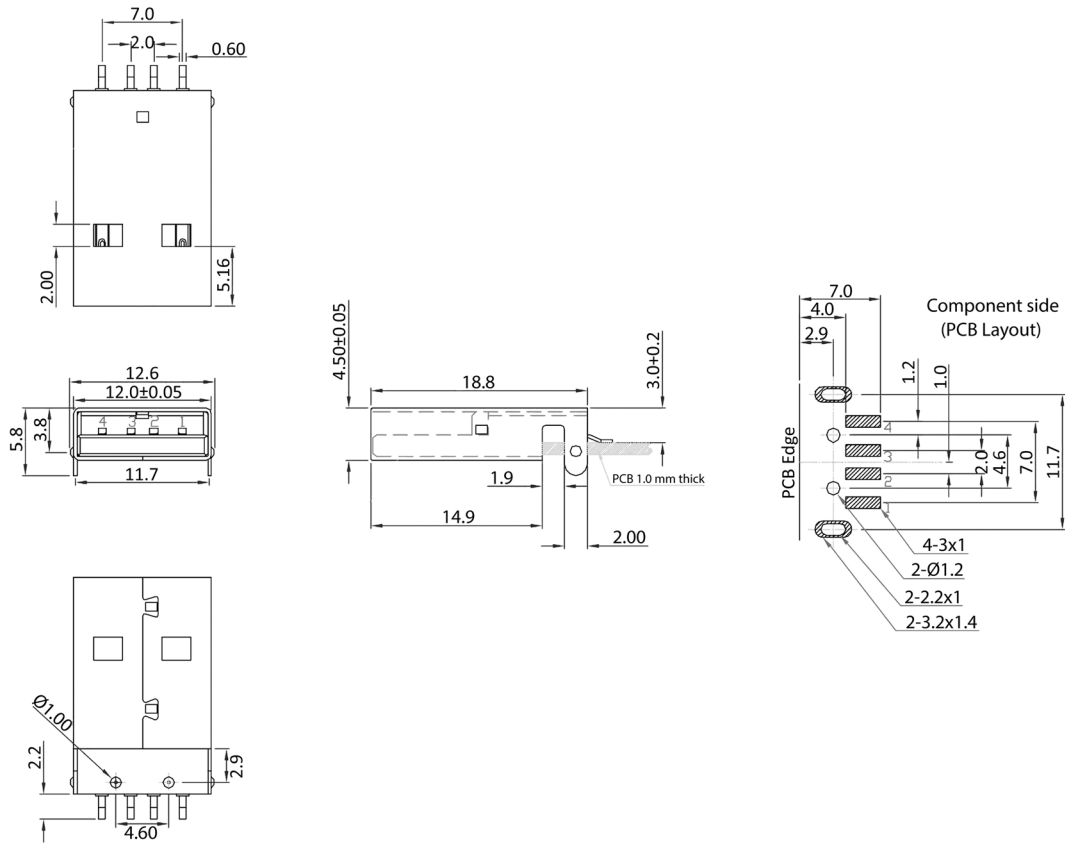
Material (Terminal):	brass, tin plated
Material (Housing):	brass, nickel plated
Flammability Class:	UL 94 V-0
Material (Insulation):	nylon PA 9T
Material (Contact Area):	Messing, vergoldet

**HANDLING:**

Packaging:	tray
------------	------

**TOLERANCE:**

.X:	± 0.38
.XX:	± 0.25



**Order Information**

Identifier:

**US1AFSN**

Chassis plug type A SMT