

SPECIFICATION:

AWG (Max.):	AWG 22
AWG (Min.):	AWG 28
Operating Voltage (Max.):	250 V
Operating Current (Nom.):	3 A
Operating Temperature:	-25°C to 85°C
Cable Diameter (Max.):	1.6 mm
Contact Resistance (Max.):	20 mΩ
Dielectric Strength:	800 Vac



MATERIAL:

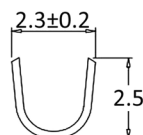
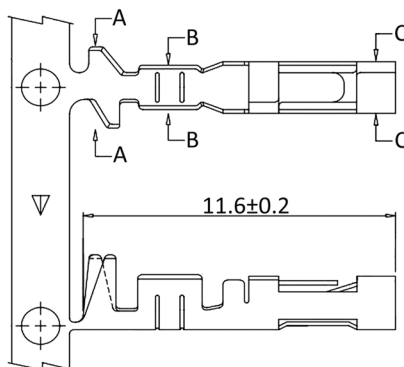
Material (Contact Area): brass, gold plated

HANDLING:

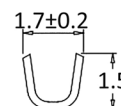
Packaging: taped

TOLERANCE:

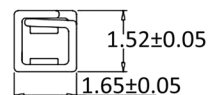
.X: ± 0.25
.XX: ± 0.13



Section A-A



Section B-B



Section C-C

Order Information

Identifier:

CKA

Terminal for CG series

Packing Unit:

#

empty: 100 pcs. separately cut
/10K: roll with 10.000 pieces