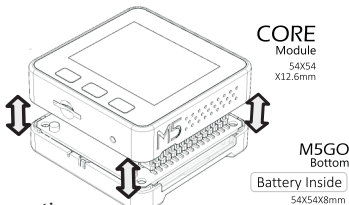


M5 CORE FIRE DEVELOPMENT KIT

- ESP32-Microcontroller with Wifi and Bluetooth
- 5.08 cm (2.0") LCD, 1W speaker, microSD slot, I2C port, 3D antenna
- 16 MB-Flash and 4 MB-PSRAM, MPU9250 9DoF motion sensor
- 600 mAh battery, LED Bar, MIC, LEGO compatible
- Includes magnet charging base and USB-C cable



- ESP32 Wi-Fi BLE FLASH 9DOF 3D-Antenna
- 5.08 cm (2") LCD 320x240 TYPE-C USB SD-Reader
- 1W Speaker MEMS MIC RGB LED x 10 3 Buttons
- 600 mAh Battery GROVE I2C GROVE I/O GROVE UART
- MicroPython LEGO Compatible Arduino Compatible



Operation

- single press **POWER ON** when using battery, and **RESET**.
- double press **POWER OFF** when using battery.

- C** TYPE Power Supply Charge UART/Upload

- GROVE PH2.0-4 SCL SDA **5V** GND

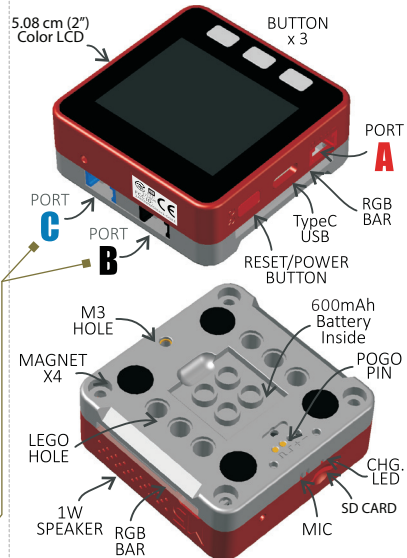
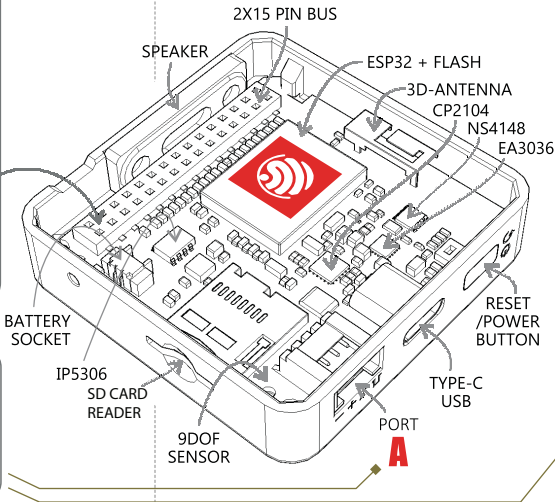
- MicroSD Carte (SD-Card) ≤16GB

M BUS

GND	ADC	G35	
GND	ADC	G36	
GND	RST	EN	
G23	MOSI	DAC/SPKG25	
G19	MISO	DAC	G26
G18	SCK	3.3V	
G3	RXD0	TXD0	G1
G16	RXD2	TXD2	G17
G21	SDA	SCL	G22
G2	GPIO	GPIO	G5
G12	IIS_SK	IIS_WS	G13
G15	IISOUT	IIS_MK	G0
HPWR	IIS_IN	G34	
HPWR	5V		
HPWR	BATTERY		

GROVE PORT	CABLE				
A	I2C	GND	5V	SDA	SCL
B	I/O	GND	5V	G26 In/Out	G36 Input
C	UART	GND	5V	TXD	RXD

Internal View



Item no. 1888211

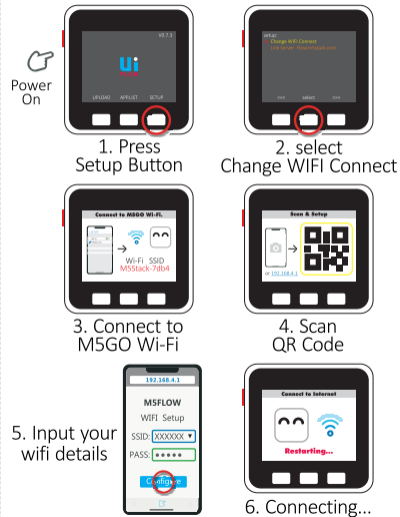


<https://www.conrad.de/>



<https://docs.makerfactory.io/>

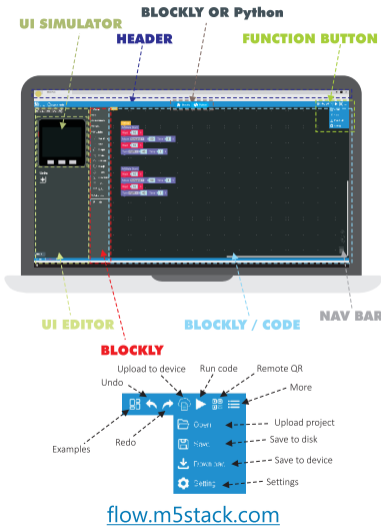
Connect WiFi



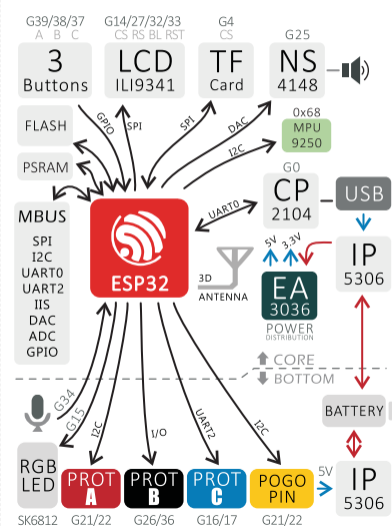
Configuring UIFLOW



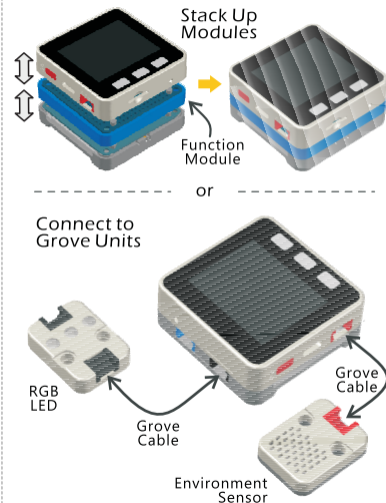
UI FLOW



Schematic



Extension



Specifications

Model	FIRE
ESP32	240 MHz dual core Tensilica LX6 microcontroller with 600 DMIPS, Integrated 520 KB SRAM, Integrated 802.11 b/g/n HT40 Wi-Fi transceiver, baseband, stack and LWIP, Integrated dual mode Bluetooth.
Flash	16M FLASH + 4M PSRAM
Input	5V @ 500mA
Interface	TypeC x 1, GROVE(I2C+I/O+UART), Pogo Pin x 1
LCD	5.08 cm (2") LCD 320x240, color TFT LCD, ILI9342
Speaker	1W-0928
Mic	MEMS Analog BSE3729 Microphone
LED	SK6812 3535 RGB LED x 10
9DOF	MPU9250
Battery	600 mAh@3.7V, inside.
Op.Temp.	0 to +40 °C (+32 to +104 °F)
Size	54 x 54 x 21 mm
C.A.S.E	Plastic (PC)
Weight	56g