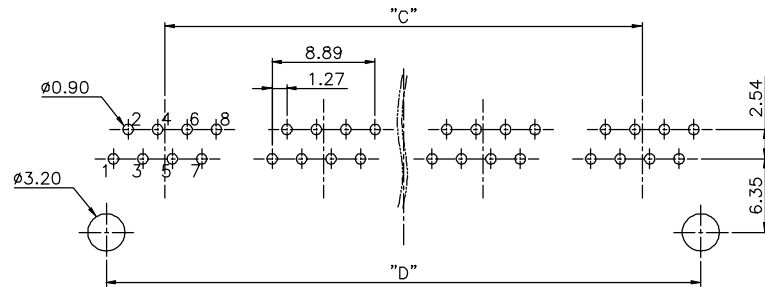
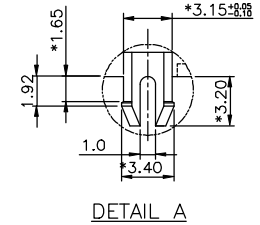
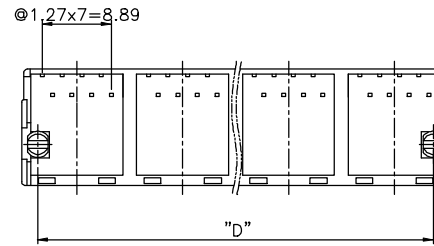
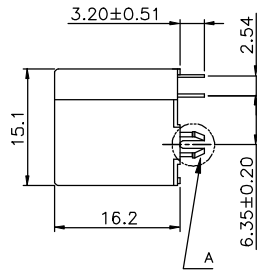
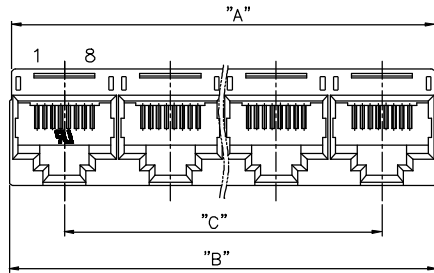




THIS IS A RoHS COMPLIANT COMPONENT/PRODUCT.



PC Board Layout
Component Side Shown

NOTES:

ELECTRICAL:

1. VOLTAGE RATING : 125 VAC.
2. CURRENT RATING : 1.5 AMP.
3. CONTACT RESISTANCE : 35 MILLIOHMS MAX.
4. INSULATION RESISTANCE : 1000 MEGOHMS MIN. @ 500 VDC.
5. DIELECTRIC STRENGTH : 1000 VAC 60Hz, 1MIN.

MECHANICAL:

1. HOUSING MATERIAL : HIGH TEMP. UL94V-0.
2. CONTACT MATERIAL : PHOSPHOR BRONZE t=0.35 mm.
3. PLATING : GOLD PLATING OVER NICKEL.
- Δ 4. OPERATING LIFE : 1500 CYCLES MIN.
5. PCB RETENTION PRE-SOLDER : 1 LB MIN.
6. PCB RETENTION POST-SOLDER : 10 LBS MIN.

ENVIRONMENTAL:

1. STORAGE : -40°C TO +85°C.
2. OPERATION : -40°C TO +85°C.

Δ MATES WITH MODULAR PLUG CONFORMING TO TIA-1096-A.

ORDERING INFORMATION

PART NUMBER	PRODUCT CODE	CONFIGURATION
325I-0008-02	RJJU-88-222-EIV-004	6U" GOLD PLATING, IX2 PORTS
325I-0008-04	RJJU-88-422-EIV-004	6U" GOLD PLATING, IX4 PORTS
325I-0008-05	RJJU-88-522-EIV-004	6U" GOLD PLATING, IX5 PORTS
325I-0008-06	RJJU-88-622-EIV-004	6U" GOLD PLATING, IX6 PORTS
325I-0008-08	RJJU-88-822-EIV-004	6U" GOLD PLATING, IX8 PORTS
325I-0008-12	RJJU-88-242-EIV-004	30U" GOLD PLATING, IX2 PORTS
325I-0008-14	RJJU-88-442-EIV-004	30U" GOLD PLATING, IX4 PORTS
325I-0008-15	RJJU-88-542-EIV-004	30U" GOLD PLATING, IX5 PORTS
325I-0008-16	RJJU-88-642-EIV-004	30U" GOLD PLATING, IX6 PORTS
325I-0008-18	RJJU-88-842-EIV-004	30U" GOLD PLATING, IX8 PORTS

PORTS	DIM	A	B	C	D
	1x2	27.40	28.00	13.70	23.80
	1x4	54.80	55.40	41.10	51.20
	1x5	68.50	69.10	54.80	64.9
	1x6	82.20	82.80	68.50	78.6
	1x8	109.60	110.20	95.90	106.0

Δ X 1		ADD PART NO.	Jacky	051515'
Δ X 3	N1212E06	ADD PART NO.	ROCK	121312'
Δ X 1		ADD PART NO.(3)	YANG	042710
Δ X 1		ADD PART NO.(3)	SAIL	101907
Δ X 0	0000000	NEW DESIGN	LINGER	010807
MARK	ECN-NO.	REVISION RECORD	DRAWN	DATE

UNLESS OTHERWISE SPECIFIED TOLERANCE		SCALE	CHECKED
Dimension Range	Tolerance	1/1	
X.X	±0.20	UNIT	APPROVED
X.XX	±0.15	mm	
X.XXX	±0.10	SIZE	
ANGLE	±5°	A3	SHEET 1/1

Material/Plated/Notes
SEE NOTE

Tool/Tag No.	PART NO.	SEE NOTE	REV.
	DOC. NO.		E

UL RECOGNIZED - FILE #E465899