

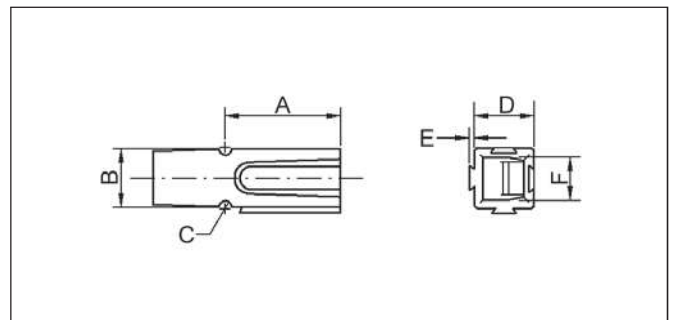
**TECHNICAL SPECIFICATIONS**

|                               |                                     |
|-------------------------------|-------------------------------------|
| Housing:                      | Polycarbonate                       |
| Contacts:                     | Copper                              |
| Contact Plating:              | Silver                              |
| Spring:                       | Stainless Steel                     |
| Flammability Rating:          | UL94 V-0                            |
| Operating Temperature Range:  | -20°C to 105°C                      |
| Insulation Withstanding Test: | 2200 VDC                            |
| Vibration Resistance:         | Excellent                           |
| Mating Cycles:                | 10,000<br>(For disconnect use only) |









**Features:**

- Cost Effective Reliability
- Genderless Connectors
- Provides 600 Volts Continuous AC or DC



| Model: | A     | B     | C    | D    | E    | F     |
|--------|-------|-------|------|------|------|-------|
| 75 A   | 29,70 | 16,30 | 2,50 | 16,0 | 1,00 | 11,40 |

**Order Codes:**

| 75A           | Part No:     | Description: | Colour:   |   |
|---------------|--------------|--------------|-----------|---|
| Housings:     | 1130-0101-01 | ET5916       | Blue      |  |
|               | 1130-0101-02 | ET5916G4     | Black     |  |
|               | 1130-0101-03 | ET5916G5     | White     |  |
|               | 1130-0101-04 | ET5916G7     | Red       |  |
|               | 1130-0101-05 | ET5916G6     | Green     |  |
| Contact pins: | 1130-0111-01 | ET5900       | 6 AWG     |  |
|               | 1130-0111-02 | ET5915       | 10-12 AWG |   |
|               | 1130-0111-03 | ET905-1      | 8 AWG     |   |

