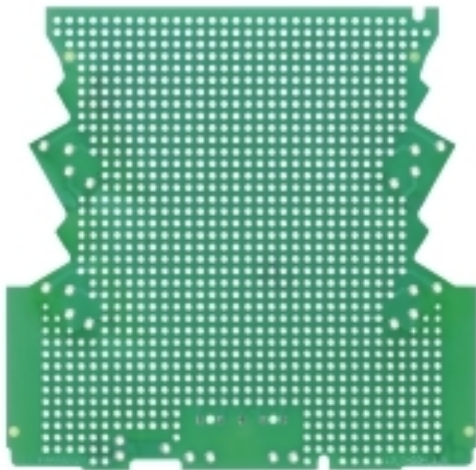


**OMNIMATE Housing - series CH20M
SAMPLE LP CH20M6**

Weidmüller Interface GmbH & Co. KG
 Klingenbergstraße 16
 D-32758 Detmold
 Germany
 Fon: +49 5231 14-0
 Fax: +49 5231 14-292083
 www.weidmueller.com

Similar to illustration**The electronics world in a single slice**

With a width of only 6.1 mm, a wide range of compact applications originates from this electronic development expertise.

The modular housing design supports the engineering with many intelligent features:

- **Maximum freedom of design** with large total surface area (6800 mm²) on the PCB – enabling the maximum component assembly with the space-saving form of the reflow-compatible THR terminals.
- **Customised design opportunities** with laser printing and housing colours, individual processing options, variable printing, and easily labelled hinged cover
- **Maximum processing efficiency** with reflow-compatible connection elements for reflow soldering in machine-ready tape packaging.
- **Error-free assembly and solder processes** with optimised frame and connecting adapter shapes on the PCB resulting in a perfect fit and positioning of the connection elements
- **Quick installation** with features such as "Wire Ready" or the all-purpose Multi-Tool screw head

The combination of extensive knowledge from electronics developers and Weidmüller competence - creating innovative synergy for electronics applications.

General ordering data

Type	SAMPLE LP CH20M6
Order No.	1171090000
Version	Electronics housing sample, OMNIMATE Housing - series CH20M , PCB for self-assembly, CH20M22, Width: 6.1 mm
GTIN (EAN)	4032248962778
Qty.	1 pc(s).

Creation date May 27, 2019 3:57:57 PM CEST

**OMNIMATE Housing - series CH20M
SAMPLE LP CH20M6**

Weidmüller Interface GmbH & Co. KG
 Klingenbergstraße 16
 D-32758 Detmold
 Germany
 Fon: +49 5231 14-0
 Fax: +49 5231 14-292083
 www.weidmueller.com

Technical data
Dimensions and weights

Width	6.1 mm	Width (inches)	0.24 inch
Net weight	22 g		

System characteristics

Version	PCB for self-assembly, CH20M22
---------	-----------------------------------

Material data

Insulating material	PA 66 GF 30	Insulating material group	II
CTI	≥ 550	Storage temperature, min.	-40 °C
Storage temperature, max.	85 °C	Max. relative humidity during storage	80 %
Operating temperature, min.	-40 °C	Operating temperature, max.	120 °C
Temperature range, installation, min.	-25 °C	Temperature range, installation, max.	85 °C

Classifications

ETIM 5.0	EC002504	ETIM 6.0	EC001031
eClass 6.2	27-18-05-05	eClass 7.1	27-18-05-05
eClass 8.1	27-18-05-05	eClass 9.0	27-18-27-02
eClass 9.1	27-18-27-92		

Notes

Notes

Approvals

ROHS	Conform
------	---------

Downloads

Brochure/Catalogue	MB DEVICE MANUF. EN FL 72H SAMPLE SER EN PO OMNIMATE EN
Engineering Data	PCB Reference Layout