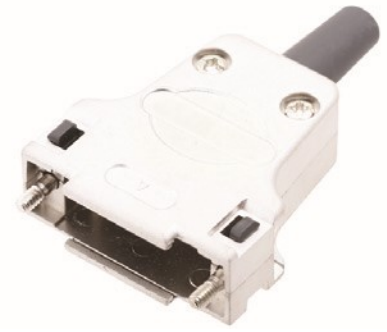


D-Sub Full Metal, Top cable entry

TECHNICAL SPECIFICATIONS

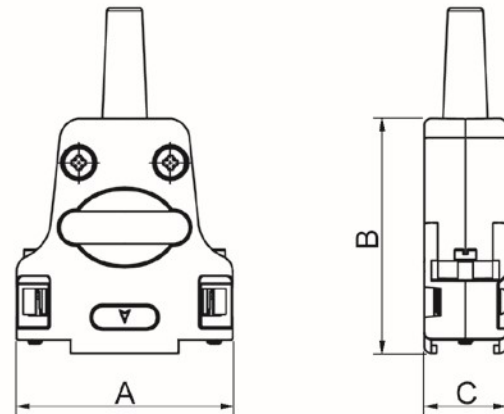
Material: Zinc, Nickel Plated
 Operating Temperature: -45°C to + 105°C
 Cable Entry: Top Entry
 Thumbscrews: UNC 4-40 (Standard)
 M2.5 and M3 on request



Cable O.D - Large:
 15-Way: Up to 9,0mm with grommet - 12,5mm without grommet
 25-Way: Up to 9.0mm with grommet - 12,5mm without grommet
 37-Way: Up to 11,5mm with grommet - 15,0mm without grommet

Features:

- Available in sizes 5-25-37
- Excellent EMI Shielding
- Re-openable
- Spring-Clip mounted Jackscrews
- Available without rubber grommet on request



| Size D45ZF | Dim A | Dim B | Dim C |
|------------|-------|-------|-------|
| 15-way | 40,0 | 41,0 | 15,2 |
| 25-way | 53,7 | 47,5 | 15,2 |
| 37-way | 70,2 | 48,0 | 15,2 |
| | | | |

Ordering information - Large Grommet Size:

| Size: | P/N - Kitted: | Product Code: |
|--------|---------------|---------------|
| 15-way | 7960-0207-02 | DTZF15-RGL-K |
| 25-way | 7960-0207-03 | DTZF25-RGL-K |
| 37-way | 7960-0207-04 | DTZF37-RGL-K |

