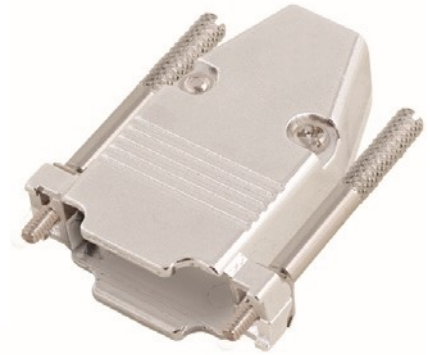


D-Sub Full Metal cover, Top entry, Long Jackscrews + Rubber inserts

**TECHNICAL SPECIFICATIONS**

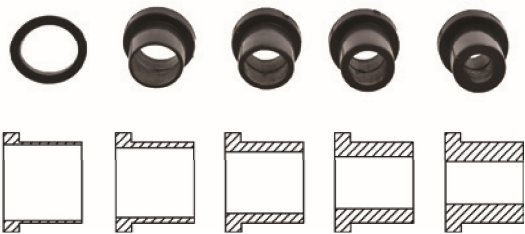
Material: Zinc, Nickel Plated  
 Operating Temperature: -25°C to +90°C  
 Cable Entry: Top Entry  
 Cable O.D.:  
 Jackscrews: UNC 4-40



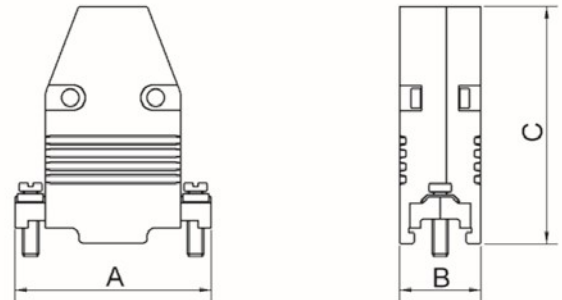
**Features:**

- Available in sizes 9, 15, 25, 37 and 50
- Suitable for any common Sub-D connector
- Re-Openable
- Also available with Short Jackscrews (ME-RG)

Compression inserts - Inner Diameters:



Size	A	B	C	D	E
9/15	8,00	7,50	7,00	6,00	4,50
25	9,50	8,30	7,90	6,75	5,80
37/50	13,50	13,00	11,00	9,00	8,00



Size CCOV	Dim A	Dim B	Dim C
9-way	31,4	16,2	53,0
15-way	40,2	16,2	48,3
25-way	53,0	16,2	48,3
37-way	69,2	16,2	48,3
50-way	67,0	18,4	48,3

**Ordering information:**

Size:	P/N - Kitted:	Product Code:
9-way	2360-0107-11	CCOV 9-MEL-RG
15-way	2360-0107-12	CCOV15-MEL-RG
25-way	2360-0107-13	CCOV25-MEL-RG
37-way	2360-0107-14	CCOV37-MEL-RG
50-way	2360-0107-15	CCOV50-MEL-RG



**Encitech AB**  
 Rörkullsvägen 4  
 SE-302 41 HALMSTAD, Sweden

Tel: +46-(0)35-15 13 90  
 e-mail: connectors@encitech.com

**www.encitech.com**