

D-Sub Plastic cover, Slide Lock with Top and Side cable entry

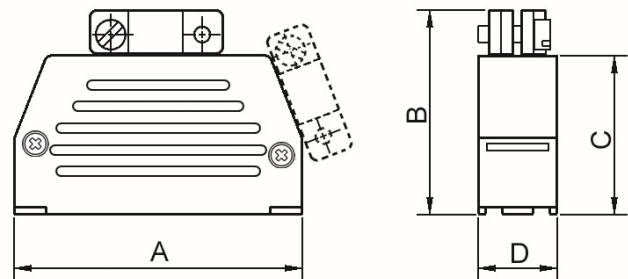
TECHNICAL SPECIFICATIONS

Material: UL Recognised Plastic Material  
 Operating Temperature: -55°C to +110°C  
 Cable Entry: Top + Side Entry  
 Cable O.D:  
 9-way Up to 6,0mm  
 15-way Up to 7,0mm  
 25-way Up to 8,0mm  
 37-way Up to 7x16 - (FLAT Clamp)  
 50-way Up to 10x16 - (FLAT Clamp)  
 Colour: Black



Features:

- Suitable for sizes 9, 15, 25, 37 and 50-way
- Easy to re-open
- Slide-Lock system integrated inside hood with special spring and slide lever
- Hood without Slide-Lock delivered on request
- Metalized version available on special request



Size	A	B	C	D
9	32,2	28,6	22,1	15,0
15	39,8	34,1	26,1	15,0
25	54,2	38,3	30,3	15,0
37	70,7	46,2	38,2	15,0
50	68,0	46,2	38,2	18,0

Ordering information:

Size:	P/N - Kitted:	Product Code:
9-way	2801-0101-01	ED-DS09S-K
15-way	2801-0101-02	ED-DS15S-K
25-way	2801-0101-03	ED-DS25S-K
37-way	2801-0101-04	ED-DS37S-K
50-way	2801-0101-05	ED-DS50S-K

