

It's getting  
warm in here!



# Meet Strips Comfort

TEMPERATURE & LIGHT SENSOR

## Makes energy saving comfortable!

Introducing Strips Comfort, the next member of the Strips ultra-thin family of sensors! Joining Strips Guard for your windows and doors and Strips Drip for water detection, Strips Comfort measures temperature and light. Strips' unique design allows placement almost anywhere and the custom battery lasts up to 10 years! This means peace of mind and no need to replace or recharge batteries, saving you time, money and energy.

- ✓ Temperature & light sensor
- ✓ Discreet mounting (ultra-thin design)
- ✓ Easy set up & installation
- ✓ Two-way communication (Z-Wave Plus®)
- ✓ Water resistant
- ✓ Indoor or outdoor use

## BENEFITS - 2 SENSORS IN 1

Two sensors in one, designed to maximize your comfort

Communicates with other Z-Wave devices like blinds and thermostats

Assists in energy saving

Extremely thin design for flexible and discreet mounting

Simple connection to your Z-Wave smart home system

Convenient, no changing or charging batteries

Suitable for outdoor use (-20 to +60°C)

## STRIPS

1



2



1. Top view

2. Side view

Actual size: 195 x 15 x 5.7 mm (Scale 1:3)

## LEARN MORE

[www.stripsbysensative.com](http://www.stripsbysensative.com)

# Strips by SENSATIVE



## CONTENTS

- Sensor
- Screws & plugs
- Mounting plate
- Cleaning Sachet
- Magnet
- Manual
- Quick Start Guide

## PARTNER WITH US!

Strips represent the next generation of sensors for the Smart Home market. Elegant design and flawless performance in extreme conditions sets them apart with an elevated value that commands a premium price. Take your product line to the next level and watch your profits soar. Connect with us today to discover the possibilities!

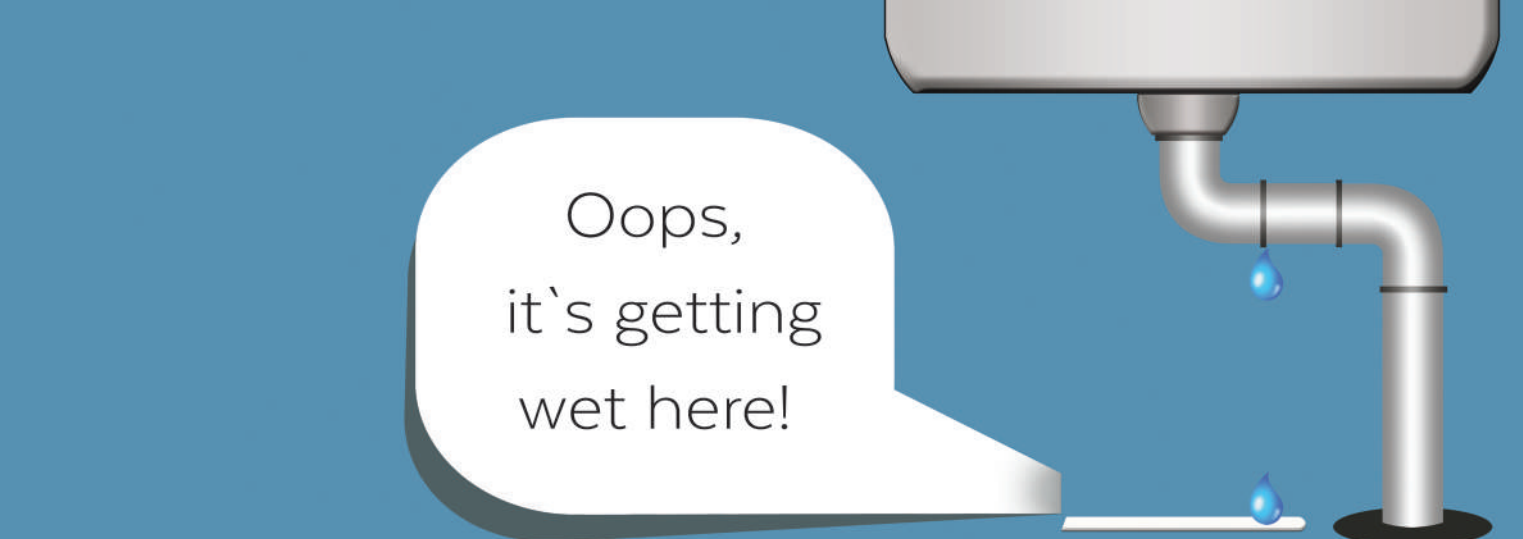
Contact our sales team  
[sales@sensative.com](mailto:sales@sensative.com)

## TECHNICAL DATA

<b>Product</b>	<b>Strips Comfort</b>
<b>Features</b>	Temperature reporting & alarms Accuracy: +/- 0.5°C Ambient light reporting (0-64 000 LUX)
<b>General</b>	
<b>Regions</b>	EU (868.4/869.85 MHz) US/Can (908.4/916 MHz)
<b>Range</b>	Up to 40 meters point to point. Non-battery Z-Wave devices will act as repeaters and may extend the range up to 150 m
<b>Dimensions</b>	Sensor: 195*15*3 mm Mounting plate: 193*14.7*2.7 mm
<b>Operating conditions</b>	-20 to + 60°C. Indoor and outdoor usage
<b>Power Supply</b>	Built-in 3.0 V LiMnO2 battery

## Z-WAVE SPECIFICATIONS

<b>Associations</b>	Group 1 (Lifeline). Max 1 node.
<b>Notification type</b>	Multilevel Sensor Report, Notification Report
<b>Wake up intervals</b>	30 min - 24 hours (default 24 h)
<b>Device class</b>	GENERIC_TYPE_SENSOR_MULTILEVEL
<b>Specific device class</b>	SPECIFIC_TYPE_ROUTING_SENSOR_MULTILEVEL
<b>Command classes</b>	COMMAND_CLASS_ZWAVEPLUS_INFO_V2 COMMAND_CLASS_ASSOCIATION_V2 COMMAND_CLASS_ASSOCIATION_GRP_INFO COMMAND_CLASS_VERSION_V2 COMMAND_CLASS_MANUFACTURER_SPECIFIC COMMAND_CLASS_SENSOR_MULTILEVEL_V5 COMMAND_CLASS_DEVICE_RESET_LOCALLY COMMAND_CLASS_POWERLEVEL COMMAND_CLASS_BATTERY COMMAND_CLASS_CONFIGURATION COMMAND_CLASS_NOTIFICATION_V4 COMMAND_CLASS_WAKE_UP_V2



Oops,  
it's getting  
wet here!

# Meet Strips Drip

WATER LEAK & TEMPERATURE SENSOR

## Watches for water, so you don't have to!

Introducing Strips Drip, the newest member of the Strips ultra-thin family of sensors! Joining Strips Guard for your windows and doors and Strips Comfort for temperature and light sensing, Strips Drip detects water in very small spaces where other sensors won't fit. Can be mounted on pipes and alert you of freezing conditions. Strips' unique design allows placement almost anywhere and the custom battery lasts up to 10 years! This means peace of mind and no need to replace or recharge batteries, saving you time, money and energy.

- ✓ Water and freeze sensor
- ✓ Discreet mounting (ultra-thin design)
- ✓ Easy set up & installation
- ✓ Two-way communication (Z-Wave<sup>®</sup> Plus)
- ✓ Water resistant
- ✓ Indoor or outdoor use

## BENEFITS - 2 SENSORS IN 1

Easy to place in hard to reach places, such as under a washing machine or sink

Early notification of water or freezing conditions prevents damage

Notification when water is gone

Simple connection to your Z-Wave smart home system

Convenient, no changing or charging batteries

Suitable for outdoor use (-20 to +60°C)

## STRIPS



1. Top view

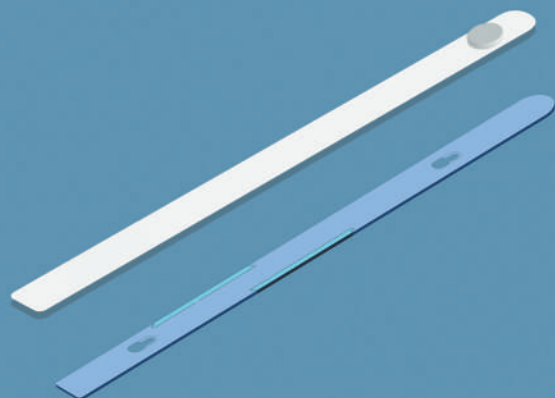
2. Side view

Actual size: 195 x 15 x 5.7 mm (Scale 1:3)

## LEARN MORE

[www.stripsbysensitive.com](http://www.stripsbysensitive.com)

# Strips by SENSATIVE



## CONTENTS

- Sensor
- Screws & plugs
- Mounting plate
- Cleaning Sachet
- Magnet
- Manual
- Quick Start Guide

## PARTNER WITH US!

Strips represent the next generation of sensors for the Smart Home market. Elegant design and flawless performance in extreme conditions sets them apart with an elevated value that commands a premium price. Take your product line to the next level and watch your profits soar. Connect with us today to discover the possibilities!

Contact our sales team  
[sales@sensative.com](mailto:sales@sensative.com)

## TECHNICAL DATA

<b>Product</b>	<b>Strips Drip</b>
<b>Key Features</b>	Water leakage alarm Ambient light reporting (0-64 000 LUX) Temperature reporting & alarm Accuracy: +/- 2 °C (-20 to 0°C) +/- 1 °C (0 to +30°C) +/- 2 °C (+30 to +60°C)
<b>General</b>	
<b>Regions</b>	EU (868.4/869.85 MHz) US/Can (908.4/916 MHz)
<b>Range</b>	Up to 40 meters, point to point. Non-battery Z-Wave devices will act as repeaters and may extend the range up to 150 m
<b>Dimensions</b>	Sensor: 195*15*3 mm Mounting plate: 193*14.7*2.7 mm
<b>Operating conditions</b>	-20 to + 60°C, indoor and outdoor usage
<b>Power Supply</b>	Built-in 3.0 V LiMnO2 battery

## Z-WAVE SPECIFICATIONS

<b>Associations</b>	Group 1 (Lifeline), Max 1 node.
<b>Notification type</b>	Multilevel Sensor Report, Notification Report
<b>Wake up intervals</b>	30 min - 24 hours (default 24 h)
<b>Device class</b>	GENERIC_TYPE_SENSOR_MULTILEVEL
<b>Specific device class</b>	SPECIFIC_TYPE_ROUTING_SENSOR_MULTILEVEL
<b>Command classes</b>	COMMAND_CLASS_ZWAVEPLUS_INFO_V2 COMMAND_CLASS_ASSOCIATION_V2 COMMAND_CLASS_ASSOCIATION_GRP_INFO COMMAND_CLASS_VERSION_V2 COMMAND_CLASS_MANUFACTURER_SPECIFIC COMMAND_CLASS_SENSOR_MULTILEVEL_V5 COMMAND_CLASS_DEVICE_RESET_LOCALLY COMMAND_CLASS_POWERLEVEL COMMAND_CLASS_BATTERY COMMAND_CLASS_CONFIGURATION COMMAND_CLASS_NOTIFICATION_V4 COMMAND_CLASS_WAKE_UP_V2

Psst, your window is open.



# Meet Strips Guard

DOOR, WINDOW & ACTIVITY SENSOR

## You won't believe what you're not seeing

Strips Guard is a revolutionary magnet sensor designed to protect doors, windows, and other valuables. So thin and sleek, Strips can be mounted almost anywhere and virtually disappears into the architecture of any room. Strips are completely weatherproof, dust proof and water resistant, operating flawlessly in extreme temperatures and so thin, they can be mounted inside or out on cabinets, drawers, artwork and even on exterior gates. With a custom battery that lasts up to 10 years just mount and never worry about charging or replacing batteries again.

- ✓ Door & Window Sensor
- ✓ Two-way communication (Z-Wave Plus® or ZigBee®)
- ✓ Discreet mounting (ultra-thin design)
- ✓ Water resistant
- ✓ Easy set up & installation
- ✓ Indoor or outdoor use

## BENEFITS

Notifies you if a door or window opens

Alerts you if something unexpected happens, such as a drawer or cabinet is opened

Ultra-thin design virtually disappears into the architecture of any room

Adhesive mounting can be attached to paintings and other valuables to alert you of suspicious activity

Up to 10 year battery life means no more changing batteries

Protects the perimeter of your home with reliable and secure Z-Wave Plus technology

## STRIPS

1



2



1. Top view

2. Side view

Actual size: 195 x 15 x 5.7 mm (Scale 1:3)

## LEARN MORE

[www.stripsbysensative.com](http://www.stripsbysensative.com)

# Strips by SENSATIVE



## CONTENTS

- Sensor
- Cleaning Sachet
- Magnets
- Manual
- Quick Start Guide

## TECHNICAL DATA

Product	Strips-MaZw (Z-Wave Plus)	Strips-MaZi (Zigbee)
<b>Features</b>	Magnet sensor, Tamper alert, LED indication	Magnet sensor, Temperature sensor, Tamper alert, LED indication. OTA (Upgrade over-the-air)
<b>Regions</b>	Europe (868.4 MHz), North America (908.4/916.0 MHz)	Global (2.4 GHz)
<b>Range</b>	Up to 40 meters. Non-battery Z-Wave devices will act as repeaters and may extend the range up to 150m	Up to 100 meters (8 dBm output power)
<b>Dimensions</b>	Sensor: 195*15*2.98 mm Magnets: A: 30*11*1 mm, B: Diameter 12 * 3 mm	Sensor: 195*15*2.98 mm Magnets: A: 30*11*1 mm, B: Diameter 12 * 3 mm
<b>Operating conditions</b>	-20 to + 60 degree C. In- and outdoor usage	-20 to + 60 degree C. In- and outdoor usage
<b>Power supply</b>	Built-in battery (LiMnO2). Life span up to 10 years *	Built-in battery (LiMnO2) Life span up to 10 years
<b>Magnetic range</b>	Approx. 15 mm	Approx. 15 mm

\* Note: Usage of range extenders, short wake up intervals and usage in low or high temperatures will shorten the battery life

## Z-WAVE SPECIFICATIONS

<b>Associations</b>	Group 1 (Lifeline). Max 1 node.
<b>Notification type</b>	Supports Binary sensor report, Notification report and Basic report
<b>Wake up intervals</b>	30 min - 24 hours (default 24 h)
<b>Device class</b>	GENERIC_TYPE_SENSOR_NOTIFICATION
<b>Specific device class</b>	SPECIFIC_TYPE_NOTIFICATION_SENSOR
<b>Command classes</b>	COMMAND_CLASS_ZWAVEPLUS_INFO_V2 COMMAND_CLASS_VERSION_V2 COMMAND_CLASS_MANUFACTURER_SPECIFIC COMMAND_CLASS_SENSOR_BINARY COMMAND_CLASS_CONFIGURATION COMMAND_CLASS_NOTIFICATION_V4 COMMAND_CLASS_DEVICE_RESET_LOCALLY COMMAND_CLASS_ASSOCIATION_V2 COMMAND_CLASS_ASSOCIATION_GRP_INFO COMMAND_CLASS_BATTERY COMMAND_CLASS_WAKE_UP_V2 COMMAND_CLASS_POWERLEVEL

## ZIGBEE SPECIFICATIONS

<ul style="list-style-type: none"> <li>· ZigBee Home Automation 1.2 compliant (certification pending)</li> <li>· Single endpoint IAS Zone</li> </ul>	
<b>Cluster support</b>	<ul style="list-style-type: none"> <li>· Basic server</li> <li>· Power configuration server</li> <li>· Identify server</li> <li>· OTA bootloading client</li> <li>· Poll control server</li> <li>· Temperature measurement server</li> <li>· IAS Zone server</li> <li>· Diagnostics server</li> </ul>

## PARTNER WITH US!

Strips represent the next generation of magnetic sensors for the Smart Home and Strips represent the next generation of magnetic sensors for the Smart Home and Security market. Elegant design and flawless performance in extreme conditions sets Guard apart with an elevated value that commands a premium price. Take your product line to the next level and watch your profits soar. Connect with us today to discover the possibilities!

[sales@sensative.com](mailto:sales@sensative.com)