

**D-SERIES DRM  
SCM 4CO P**

**Weidmüller Interface GmbH & Co. KG**  
Klingenbergstraße 16  
D-32758 Detmold  
Germany  
Fon: +49 5231 14-0  
Fax: +49 5231 14-292083  
www.weidmueller.com

**Product image**

Accessories for D-SERIES relays include:

- Relay bases
- LED / Protective modules
- Metal retaining clips

**General ordering data**

Type	SCM 4CO P
Order No.	<a href="#">7760056363</a>
Version	D-SERIES DRM, Relay bases, No. of contacts: 4 CO contact, Continuous current: 6 A, PUSH IN with actuator
GTIN (EAN)	6944 169772276
Qty.	10 pc(s).

**D-SERIES DRM  
SCM 4CO P**

**Weidmüller Interface GmbH & Co. KG**  
 Klingenbergstraße 16  
 D-32758 Detmold  
 Germany  
 Fon: +49 5231 14-0  
 Fax: +49 5231 14-292083  
 www.weidmueller.com

**Technical data****Dimensions and weights**

Width	30.6 mm	Width (inches)	1.205 inch
Height	101.8 mm	Height (inches)	4.008 inch
Depth	42.7 mm	Depth (inches)	1.681 inch
Net weight	71.12 g		

**Temperatures**

Humidity	5...85 %, no condensation	Operating temperature, max.	55 °C
Operating temperature, min.	-40 °C	Storage temperature, max.	85 °C
Storage temperature, min.	-40 °C	Operating temperature	-40 °C...85 °C
Storage temperature	-40 °C...85 °C		

**Environmental Product Compliance**

REACH SVHC	Lead 7439-92-1
------------	----------------

**Rated data UL**

Certificate No. (cURus)	E355547
-------------------------	---------

**Output**

Rated switching voltage	250 V AC	Max. switching voltage, AC	250 V
Continuous current	6 A		

**Contact data**

Contact type	4 CO contact
--------------	--------------

**General data**

Rail	TS 35	Colour	black
------	-------	--------	-------

**Insulation coordination**

Rated voltage	300 V	Surge voltage category	III
Pollution severity	2	Insulating material group	IIIb
Protection degree	IP20	Dielectric strength, Input/Output	4 kV <sub>eff</sub> / 1 min
Impulse withstand voltage at input and output	4.8 kV (1.2/50 µs)	Creepage and clearance distance input – output	≥ 3 mm
Dielectric strength of neighbouring contacts	2.5 kV <sub>eff</sub> / 1 Min.	Impulse withstand voltage at neighbouring contacts	4.8 kV (1.2/50 µs)
Dielectric strength of open contact	2.5 kV <sub>eff</sub> / 1 Min.		

**Further details of approvals / standards**

Certificate No. (cURus)	E355547
-------------------------	---------

**D-SERIES DRM  
SCM 4CO P**

**Weidmüller Interface GmbH & Co. KG**  
Klingenbergstraße 16  
D-32758 Detmold  
Germany  
Fon: +49 5231 14-0  
Fax: +49 5231 14-292083  
www.weidmueller.com

**Technical data**

**Connection data**

Wire connection method	PUSH IN with actuator	Stripping length, rated connection	10 mm
Clamping range, rated connection	1.5 mm <sup>2</sup>	Clamping range, min.	0.14 mm <sup>2</sup>
Clamping range, max.	1.5 mm <sup>2</sup>	Wire connection cross section AWG, min.	AWG 26
Wire connection cross section AWG, max.	AWG 16	Wire cross-section, solid, min.	0.14 mm <sup>2</sup>
Wire cross-section, solid, max.	1.5 mm <sup>2</sup>	Wire connection cross-section, finely stranded, min.	0.14 mm <sup>2</sup>
Wire connection cross section, finely stranded, max.	1.5 mm <sup>2</sup>	Wire connection cross-section, finely stranded with wire-end ferrules DIN 46228/4, min.	0.14 mm <sup>2</sup>
Wire connection cross-section, finely stranded with wire-end ferrules DIN 46228/4, max.	1 mm <sup>2</sup>	Conductor cross-section, flexible, AEH (DIN 46228-1), min.	0.14 mm <sup>2</sup>
Conductor cross-section, flexible, AEH (DIN 46228-1), max.	1.5 mm <sup>2</sup>	Blade size	0.4 x 2.5 mm

**Classifications**

ETIM 6.0	EC001456	eClass 6.2	27-37-16-03
eClass 9.0	27-37-16-03	eClass 9.1	27-37-16-03

**Product information**

Product information Only connection A2 with the cross-connection SCM/SDI P CC (art. no. 7760056366) can be bridged on this socket.

**Approvals**

Approvals



ROHS Conform

**Downloads**

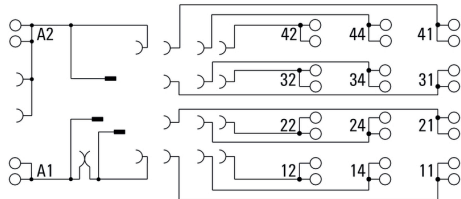
Approval/Certificate/Document of Conformity	<a href="#">DE_PA_5600_160310_001.pdf</a>
Engineering Data	<a href="#">EPLAN</a>
Engineering Data	<a href="#">STEP</a> <a href="#">STEP</a>

**D-SERIES DRM  
SCM 4CO P**

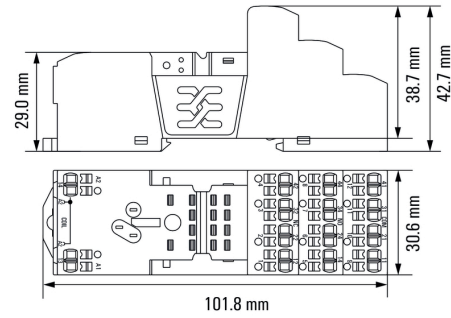
**Weidmüller Interface GmbH & Co. KG**  
 Klingenbergstraße 16  
 D-32758 Detmold  
 Germany  
 Fon: +49 5231 14-0  
 Fax: +49 5231 14-292083  
 www.weidmueller.com

**Drawings**

**Wiring diagram**



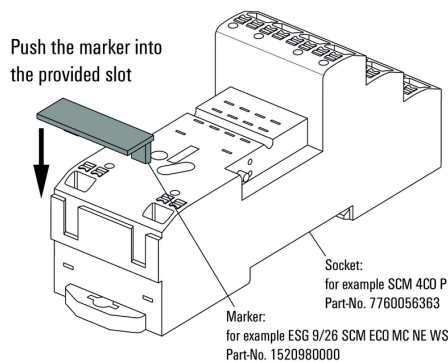
**Dimensional drawing**



**Example of use**

**How to install marker**

on PUSH IN connection sockets (one slot available)

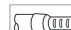
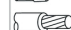
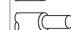


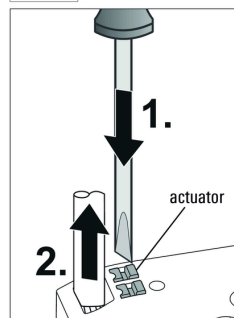
**How to install marker**

on PUSH IN connection sockets (one slot available)

**Miscellaneous**

**Removal of cables**

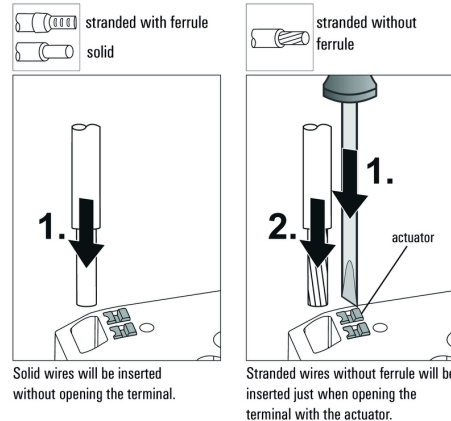
-  stranded with ferrule
-  stranded without ferrule
-  solid



Wires will be disconnected just when opening the terminal with the actuator.

**Miscellaneous**

**Insert flexible and solid cables**



Solid wires will be inserted without opening the terminal.

Stranded wires without ferrule will be inserted just when opening the terminal with the actuator.

**Miscellaneous**

**Recommended screwdriver**

to push the actuator in PUSH IN

