

HS-FR 3.2-6.4/25 MM W**Weidmüller Interface GmbH & Co. KG**

Klingenbergstraße 16

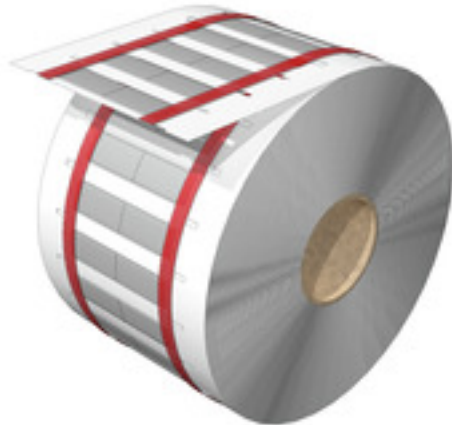
D-32758 Detmold

Germany

Fon: +49 5231 14-0

Fax: +49 5231 14-292083

www.weidmueller.com

**MultiMark**

With MultiMark you have a fast and reliable marking system at your disposal to enable virtually any kind of marking. Connectors, conductors, cables or devices – the MultiMark product family offers a well-structured, practical range of markers which can be used in combination with our advanced M-Print® PRO configuration software for all areas of use.

Your benefits with MultiMark

- Compact, practice-oriented range of products
- Quickly printed and assembled
- Reliable identification of your connections
- Excellent material properties

General ordering data

Type	HS-FR 3.2-6.4/25 MM W
Order No.	2621620000
Version	Conductor and cable markers, 3.2 - 6.4 mm, 24.9 x 10.3 mm, white
GTIN (EAN)	4050118625424
Qty.	2,000 pc(s).
compatible printer	2430920000

HS-FR 3.2-6.4/25 MM W

Weidmüller Interface GmbH & Co. KG

Klingenbergstraße 16

D-32758 Detmold

Germany

Fon: +49 5231 14-0

Fax: +49 5231 14-292083

www.weidmueller.com

Technical data

Dimensions and weights

Width	10.3 mm	Width (inches)	0.406 inch
Height	24.9 mm	Height (inches)	0.98 inch
Depth	0.77 mm	Depth (inches)	0.03 inch
Net weight	0.3 g		

General data

Colour	white	Halogen	No
Material	Polyolefine	Operating temperature range	-55... 125 °C
Size of labelling field	10.3 x 24.9 mm	Width	10.3 mm

Conductor and cable markers

Conductor O.D.	3.2 - 6.4 mm	Conductor O.D., max.	6.4 mm
Conductor O.D., min.	3.2 mm	Conductor cross-section, max.	6 mm ²
Conductor cross-section, min.	1.5 mm ²	Halogen	No
Rate of shrinkage	2:1	Recommended shrinking temperature	90 °C
Wire connection cross section AWG, max.	AWG 10	Wire connection cross section AWG, min.	AWG 16

Classifications

ETIM 5.0	EC001530	ETIM 6.0	EC001530
eClass 6.2	27-40-04-01	eClass 9.0	27-40-04-01
eClass 9.1	27-40-04-01		

Approvals

ROHS	Conform
------	---------

Data sheet

HS-FR 3.2-6.4/25 MM W

Weidmüller Interface GmbH & Co. KG
Klingenbergstraße 16
D-32758 Detmold
Germany
Fon: +49 5231 14-0
Fax: +49 5231 14-292083
www.weidmueller.com

Drawings

