

**D-SERIES DRI
SDI 2CO P**

Weidmüller Interface GmbH & Co. KG
 Klingenbergstraße 16
 D-32758 Detmold
 Germany
 Fon: +49 5231 14-0
 Fax: +49 5231 14-292083
 www.weidmueller.com

Product image


Accessories for D-SERIES relays include:

- Relay bases
- LED / Protective modules
- Metal retaining clips

General ordering data

| | |
|------------|--|
| Type | SDI 2CO P |
| Order No. | 7760056365 |
| Version | D-SERIES DRI, Relay bases, No. of contacts: 2 CO contact, Continuous current: 8 A, PUSH IN with actuator |
| GTIN (EAN) | 6944 169772290 |
| Qty. | 20 pc(s). |

**D-SERIES DRI
SDI 2CO P**

Weidmüller Interface GmbH & Co. KG
Klingenbergstraße 16
D-32758 Detmold
Germany
Fon: +49 5231 14-0
Fax: +49 5231 14-292083
www.weidmueller.com

Technical data
Dimensions and weights

| | | | |
|------------|----------|-----------------|------------|
| Width | 15.9 mm | Width (inches) | 0.626 inch |
| Height | 102.1 mm | Height (inches) | 4.02 inch |
| Depth | 42.7 mm | Depth (inches) | 1.681 inch |
| Net weight | 38.72 g | | |

Temperatures

| | | | |
|-----------------------------|---------------------------|-----------------------------|----------------|
| Humidity | 5...85 %, no condensation | Operating temperature, max. | 55 °C |
| Operating temperature, min. | -40 °C | Storage temperature, max. | 85 °C |
| Storage temperature, min. | -40 °C | Operating temperature | -40 °C...85 °C |
| Storage temperature | -40 °C...85 °C | | |

Environmental Product Compliance

| | |
|------------|----------------|
| REACH SVHC | Lead 7439-92-1 |
|------------|----------------|

Rated data UL

| | |
|-------------------------|---------|
| Certificate No. (cURus) | E312083 |
|-------------------------|---------|

Output

| | | | |
|-------------------------|----------|----------------------------|-------|
| Rated switching voltage | 250 V AC | Max. switching voltage, AC | 250 V |
| Continuous current | 8 A | | |

Contact data

| | |
|--------------|--------------|
| Contact type | 2 CO contact |
|--------------|--------------|

General data

| | | | |
|------|-------|--------|-------|
| Rail | TS 35 | Colour | black |
|------|-------|--------|-------|

Insulation coordination

| | | | |
|--|--------------------|--|--------------------------------|
| Rated voltage | 300 V | Surge voltage category | III |
| Pollution severity | 2 | Insulating material group | IIIb |
| Protection degree | IP20 | Dielectric strength, Input/Output | 5 kV _{eff} / 1 min |
| Creepage and clearance distance input - output | ≥ 3 mm | Dielectric strength of neighbouring contacts | 2.5 kV _{eff} / 1 Min. |
| Impulse withstand voltage at neighbouring contacts | 4.8 kV (1.2/50 µs) | | |

Further details of approvals / standards

| | |
|-------------------------|---------|
| Certificate No. (cURus) | E312083 |
|-------------------------|---------|

D-SERIES DRI SDI 2CO P

Weidmüller Interface GmbH & Co. KG
 Klingenbergstraße 16
 D-32758 Detmold
 Germany
 Fon: +49 5231 14-0
 Fax: +49 5231 14-292083
 www.weidmueller.com

Technical data

Connection data

| | | | |
|---|-----------------------|---|----------------------|
| Wire connection method | PUSH IN with actuator | Stripping length, rated connection | 10 mm |
| Clamping range, rated connection | 1.5 mm ² | Clamping range, min. | 0.14 mm ² |
| Clamping range, max. | 1.5 mm ² | Wire connection cross section AWG, min. | AWG 26 |
| Wire connection cross section AWG, max. | AWG 16 | Wire cross-section, solid, min. | 0.14 mm ² |
| Wire cross-section, solid, max. | 1.5 mm ² | Wire connection cross-section, finely stranded, min. | 0.14 mm ² |
| Wire connection cross section, finely stranded, max. | 1.5 mm ² | Wire connection cross-section, finely stranded with wire-end ferrules DIN 46228/4, min. | 0.14 mm ² |
| Wire connection cross-section, finely stranded with wire-end ferrules DIN 46228/4, max. | 1 mm ² | Conductor cross-section, flexible, AEH (DIN 46228-1), min. | 0.14 mm ² |
| Conductor cross-section, flexible, AEH (DIN 46228-1), max. | 1.5 mm ² | Blade size | 0.4 x 2.5 mm |

Classifications

| | | | |
|------------|-------------|------------|-------------|
| ETIM 6.0 | EC001456 | eClass 9.0 | 27-37-16-03 |
| eClass 9.1 | 27-37-16-03 | | |

Product information

Product information Only connection A2 with the cross-connection SCM/SDI P CC (art. no. 7760056366) can be bridged on this socket.

The protection module (RC filter) RIM 3 110/230VAC LED with order no. 7760056045 is not compatible with this socket.

Approvals

Approvals



ROHS Conform

Downloads

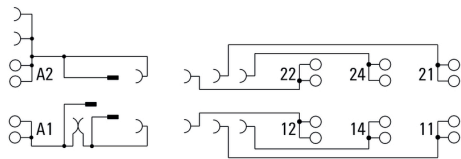
| | |
|---|--|
| Approval/Certificate/Document of Conformity | DE_PA_5600_160310_002.pdf |
| Engineering Data | EPLAN |
| Engineering Data | STEP STEP |

**D-SERIES DRI
SDI 2CO P**

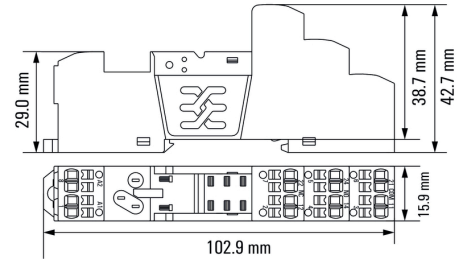
Weidmüller Interface GmbH & Co. KG
 Klingenbergstraße 16
 D-32758 Detmold
 Germany
 Fon: +49 5231 14-0
 Fax: +49 5231 14-292083
 www.weidmueller.com

Drawings

Wiring diagram



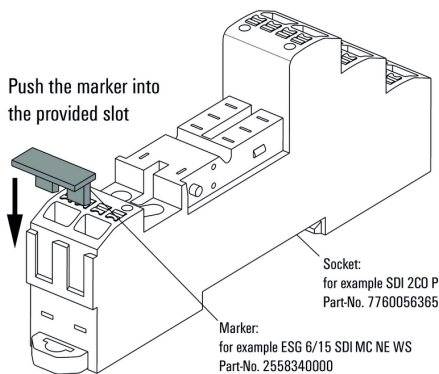
Dimensional drawing



Example of use

How to install marker

on PUSH IN connection sockets (one slot available)



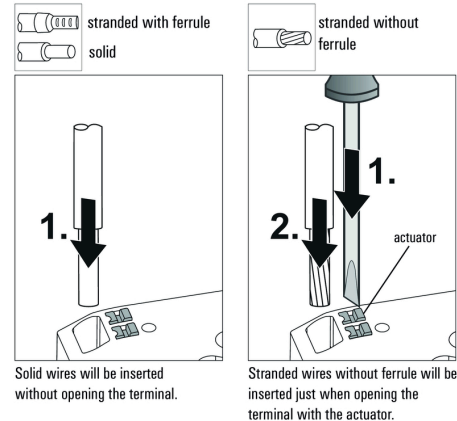
How to install marker

on PUSH IN connection sockets (one slot available)




Miscellaneous

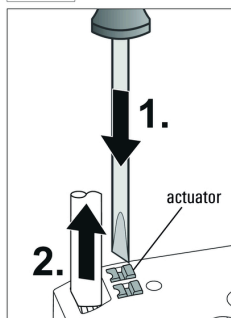
Miscellaneous

Insert flexible and solid cables



Removal of cables

-  stranded with ferrule
-  stranded without ferrule
-  solid



Wires will be disconnected just when opening the terminal with the actuator.

Miscellaneous

Recommended screwdriver

to push the actuator in PUSH IN

