



- LS 20.00 knx: Light/brightness sensor for building automation system KNX
- LS 30.00 knx: Light/brightness and temperature sensor for building automation system KNX
- Compact housing
- Simple mounting
- Also suitable for outdoor use

**Following data and functions will be provided to the KNX bus:**

- Light control
- Temperature control (LS 30.00 knx only)
- Twilight switch with daily program
- Daily time switch

**Connect**

switching controlling counting

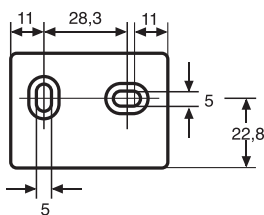
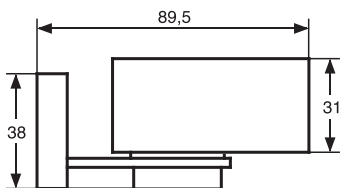
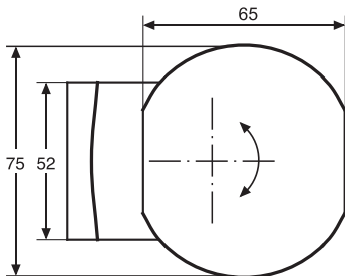
**Brightness sensors LS 20.00 knx**  
**Brightness and temperature sensors LS 30.00 knx**  
 for wall mounting

**Highlights**

- LS 20.00 knx: Light/brightness sensor
- LS 30.00 knx: Light/brightness sensor and temperature sensor

**Technical data**

<b>Power supply</b>	via KNX bus voltage
<b>Bus current</b>	approx. 10 mA
<b>Bus system</b>	KNX
<b>Measuring range light sensor</b>	1 ... 22.000 Lux
<b>Measuring range temperature sensor (LS 30.00 knx only)</b>	-30°...+55°C
<b>Permitted ambient temperature</b>	-30°...+55°C
<b>Housing</b>	self-extinguishing thermoplastic
<b>Mounting</b>	wall mounting (with included bracket)
<b>Type of protection</b>	IP 54 (DIN EN 60529)
<b>Type of connection</b>	KNX bus terminal



Order Number	Version	Sensors
✓ LS 20.00 knx	for wall mounting (with included bracket)	Light/brightness
✓ LS 30.00 knx	for wall mounting (with included bracket)	Light/brightness, temperature

▼ Housing colour