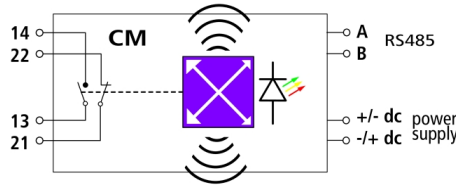


DRC MCM XT (910 695)

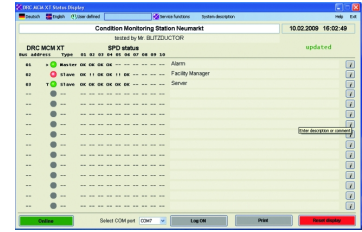
- Condition monitoring of LifeCheck-equipped SPDs
- Permanent monitoring of up to 10 SPDs (40 signal lines)
- Minimum wiring effort
- Remote signalling via remote signalling contact or optional RS485 interface



Figure without obligation



Basic circuit diagram DRC MCM XT



DRC MCM XT status display software

DIN rail mounted device with integrated LifeCheck sensor for condition monitoring of max. ten LifeCheck-equipped BLITZDUCTOR XT / XTU arresters. Visual operating state indication via three-coloured LED in conjunction with remote signalling contact (break or make contact). An RS 485 interface allows to connect up to 15 DRC MCM XT.

The free "Status Display and Service Console" software can be optionally used via an RS485 interface converter. With the software a remote condition monitoring of all arresters is possible by PC.

Download: www.dehn-international.com (Service section)

| Type | DRC MCM XT |
|--|---|
| Part No. | 910 695 |
| For testing | up to 10 BLITZDUCTOR XT / XTU ML arresters |
| For testing | up to 10 BLITZDUCTOR XT / XTU ML EX arresters; for use in non-hazardous atmospheres only! Observe thread measure! |
| Operating elements | multiway button, DIP switch |
| Indicator | three-coloured LED (green, orange, red) |
| Input voltage range (d.c.) (U_{IN}) | 18-48 V |
| Max. rated current consumption (I_{IN}) | 100 mA |
| RFID transmission frequency | 125 kHz |
| Message: Replacing of SPD recommended | LED, remote signalling contact (break and make contact) |
| Test cycle | continuous |
| Operating temperature range for monitoring 10 BXT / BXTU arresters | -20 °C ... +60 °C |
| Operating temperature range for monitoring 8 BXT / BXTU arresters | -40 °C ... +80 °C |
| Degree of protection | IP 20 |
| For mounting on | 35 mm DIN rails acc. to EN 60715 |
| Connection | screw |
| Cross-sectional area, solid / flexible | 0.08-2.5 mm ² |
| Tightening torque (terminal) | 0.4 Nm |
| Enclosure material | polyamide PA 6.6 |
| Colour | grey |
| Test standards | EN 61010-1, 61000-6-2/4, ETSI EN 300 330-1 V1.7.1 |
| Type of remote signalling contact | make (no) and break contact (nc) |
| Technical data of remote signalling contact | contact resistance < 25 ohms; leakage current < 1 µA |
| Switching capacity (d.c.) | 350 V / 0.12 A |
| Switching capacity (a.c.) | 250 V / 0.07 A |
| Delivery includes | base part, monitoring module, quick guide and labelling system |
| Weight | 180 g |
| Customs tariff number (Comb. Nomenclature EU) | 85389091 |
| GTIN | 4013364118959 |
| PU | 1 pc(s) |

We reserve the right to introduce changes in performance, configuration and technology, dimensions, weights and materials in the course of technical progress. The figures are shown without obligation.