

## STAK 2X16 (900 589)

- Allows to connect conductors with cross-sections that are smaller than the specified minimum terminal cross-section of the surge protective device

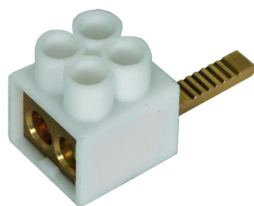
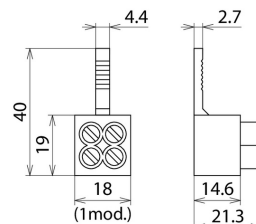


Figure without obligation



Pin-shaped terminal for EMC-optimised feed-through wiring of lightning current and surge arresters according to IEC 60364-5-53.

Type	STAK 2X16
Part No.	900 589
Lightning impulse current (10/350 $\mu$ s)	25 kA
Cross-sectional area (min.)	2x 1.5 mm <sup>2</sup>
Cross-sectional area (max.)	2x max. 16 mm <sup>2</sup>
Type of connection	front (double terminal)
Weight	20 g
Customs tariff number (Comb. Nomenclature EU)	85369010
GTIN	4013364109339
PU	1 pc(s)

We reserve the right to introduce changes in performance, configuration and technology, dimensions, weights and materials in the course of technical progress. The figures are shown without obligation.