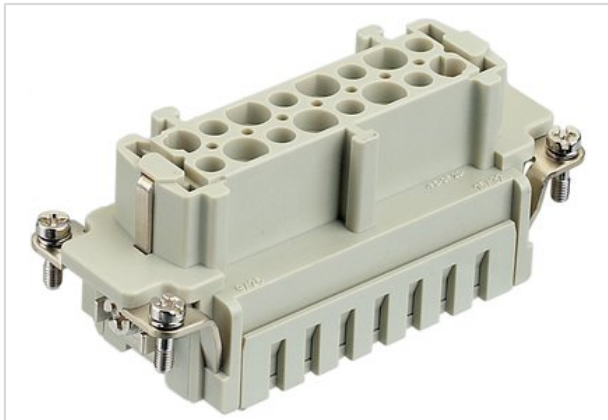


Han 6HvES-F



Part number	09 34 006 2716
Specification	Han 6HvES-F
HARTING eCatalogue	https://b2b.harting.com/09340062716

Identification

Category	Inserts
Series	Han [®] Hv ES

Version

Termination method	Cage-clamp termination
Gender	Female
Size	16 B
Number of contacts	6
Additional contacts	+ 2 additional relay contacts
PE contact	Yes
Details	Not mating compatible to Han Hv E [®] screw/crimp termination

Technical characteristics

Conductor cross-section	0.14 ... 2.5 mm ²
Conductor cross-section	AWG 26 ... AWG 14
Electrical data acc. to IEC 61984	16 A 830 V 8 kV 3
Rated current	16 A
Rated voltage	830 V
Rated impulse voltage	8 kV
Pollution degree	3
Rated voltage acc. to UL	600 V
Rated voltage acc. to CSA	600 V
Insulation resistance	≥10 ¹⁰ Ω
Contact resistance	≤3 mΩ
Limiting temperature	-40 ... +125 °C
Stripping length	7 ... 9 mm



Technical characteristics

Mating cycles ≥ 500

Material properties

Material (insert)	Polycarbonate
Colour (insert)	RAL 7032 (pebble grey)
Material (contacts)	Copper alloy
Surface (contacts)	Silver plated
Material flammability class acc. to UL 94	V-0
RoHS	compliant with exemption
RoHS exemptions	6c: Copper alloy containing up to 4 % lead by weight
ELV status	compliant with exemption
China RoHS	50
REACH Annex XVII substances	No
REACH ANNEX XIV substances	No
REACH SVHC substances	Yes
REACH SVHC substances	Lead

Specifications and approvals

Specifications	EN 60664-1 IEC 61984
UL / CSA	UL 1977 ECBT2.E235076

Commercial data

Packaging size	1
Net weight	76.26 g
Country of origin	Germany
Customs tariff number	85366990