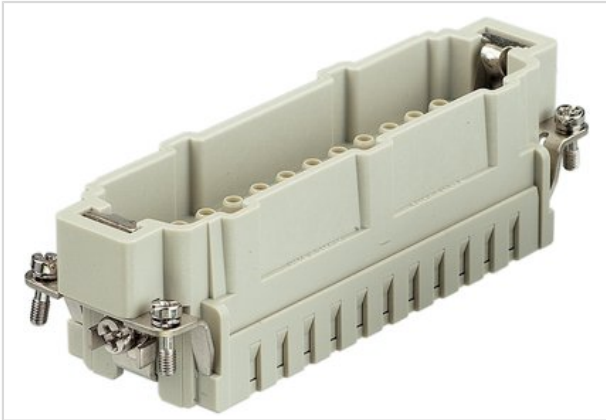


Han 10HvE-M-c



Part number	09 34 010 2602
Specification	Han 10HvE-M-c
HARTING eCatalogue	https://b2b.harting.com/09340102602

Identification

Category	Inserts
Series	Han Hv E®

Version

Termination method	Crimp termination
Gender	Male
Size	24 B
Number of contacts	10
Additional contacts	+ 2 additional relay contacts
PE contact	Yes
Details	Please order crimp contacts separately.

Technical characteristics

Conductor cross-section	0.5 ... 4 mm ²
Conductor cross-section	AWG 20 ... AWG 12
Electrical data acc. to IEC 61984	16 A 830 V 8 kV 3
Rated current	16 A
Rated voltage	830 V
Rated impulse voltage	8 kV
Pollution degree	3
Rated voltage acc. to UL	600 V
Rated voltage acc. to CSA	600 V
Insulation resistance	≥10 ¹⁰ Ω
Limiting temperature	-40 ... +125 °C
Mating cycles	≥500

Material properties

Material (insert)	Polycarbonate
-------------------	---------------



Pushing Performance

Material properties

Colour (insert)	RAL 7032 (pebble grey)
Material flammability class acc. to UL 94	V-0
RoHS	compliant
ELV status	compliant
China RoHS	e
REACH Annex XVII substances	No
REACH ANNEX XIV substances	No
REACH SVHC substances	No

Specifications and approvals

Specifications	EN 60664-1 IEC 61984
UL / CSA	UL 1977 ECBT2.E235076

Commercial data

Packaging size	1
Net weight	70.52 g
Country of origin	Germany
Customs tariff number	85389099