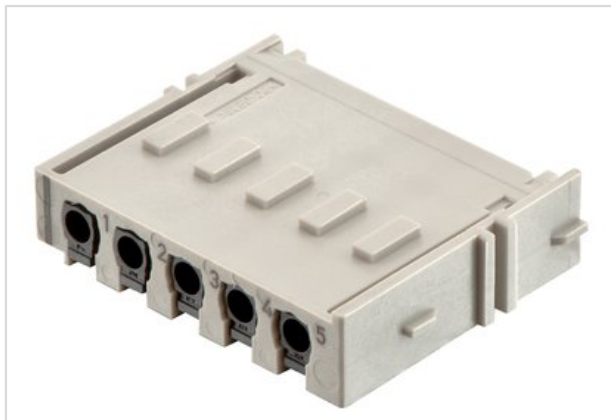


Han Yellock Module QL 10A, 1,5qmm



Part number	11 05 105 2634
Specification	Han Yellock Module QL 10A, 1,5qmm
HARTING eCatalogue	https://b2b.harting.com/11051052634

Identification

Category	Inserts
Series	Han-Yellock®
Element	Module

Version

Termination method	Han-Quick Lock® termination
Gender	Male
Number of contacts	5
Details	Black slide

Technical characteristics

Conductor cross-section	0.25 ... 1.5 mm²
Electrical data acc. to IEC 61984	10 A 500 V 6 kV 3
Rated current	10 A
Rated voltage	500 V
Rated impulse voltage	6 kV
Pollution degree	3
Insulation resistance	$\geq 10^{10} \Omega$
Contact resistance	$\leq 2 \text{ m}\Omega$
Limiting temperature	-40 ... +125 °C
Stripping length	10 mm
Mating cycles	≥ 500

Material properties

Material (insert)	Polycarbonate
Colour (insert)	RAL 7032 (pebble grey)
Material (contacts)	Copper alloy
Surface (contacts)	Silver plated



Pushing Performance

Material properties

Material flammability class acc. to UL 94	V-0
RoHS	compliant
ELV status	compliant
China RoHS	e
REACH Annex XVII substances	No
REACH ANNEX XIV substances	No
REACH SVHC substances	No

Specifications and approvals

Specifications	EN 60664-1
	IEC 61984
Approvals	DNV GL

Commercial data

Packaging size	2
Net weight	12.8 g
Country of origin	Germany
Customs tariff number	85389099