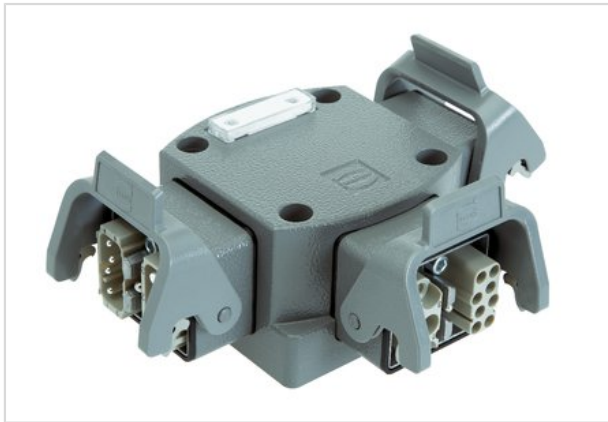


Han Power T Modular Twin



Part number	09 12 008 4760
Specification	Han Power T Modular Twin
HARTING eCatalogue	https://b2b.harting.com/09120084760

Identification

Category	Energy distributor
Series of hoods/housings	Han-Power® T
Element	Energy distributor
Specification	With 3x Han-Modular® Twin Bulkhead mounted housings

Version

Number of contacts	3
Additional contacts	+ 4 additional signal contacts

Technical characteristics

Electrical data acc. to IEC 61984	40 A 400/690 V 6 kV 3
Rated current	40 A
Rated voltage conductor-earth	400 V
Rated voltage conductor-conductor	690 V
Rated impulse voltage	6 kV
Pollution degree	3
Electrical data, signal	16 A 400 V 6 kV 3
Rated current (signal)	16 A
Rated voltage (signal)	400 V
Rated impulse voltage (signal)	6 kV
Pollution degree (signal)	3
Rated voltage acc. to UL	600 V
Insulation resistance	$\geq 10^{10} \Omega$
Mating cycles	≥ 500
Degree of protection acc. to IEC 60529	IP65

Material properties

Material (contacts)	Copper alloy
---------------------	--------------



Pushing Performance

Material properties

Material (hood/housing)	Zinc die-cast
Surface (hood/housing)	Powder-coated
Colour (hood/housing)	RAL 7037 (dust grey)
Material (seal)	NBR
Material (locking)	Polycarbonate Stainless steel
Material flammability class acc. to UL 94	V-0
RoHS	compliant with exemption
RoHS exemptions	6c: Copper alloy containing up to 4 % lead by weight
ELV status	compliant with exemption
China RoHS	50
REACH Annex XVII substances	No
REACH ANNEX XIV substances	No
REACH SVHC substances	Yes
REACH SVHC substances	Lead

Specifications and approvals

Specifications	EN 60664-1 IEC 61984
CE	Yes

Commercial data

Packaging size	1
Net weight	857.36 g
Country of origin	Germany
Customs tariff number	85366990