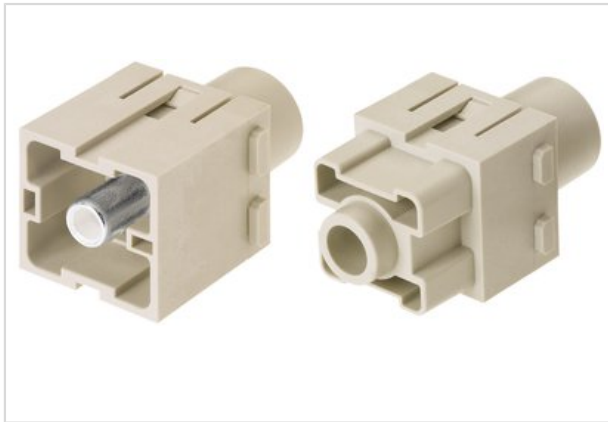


## Han 200A axial module, female 40-70 mm<sup>2</sup>



Part number	09 14 001 2762
Specification	Han 200A axial module, female 40-70 mm <sup>2</sup>
HARTING eCatalogue	<a href="https://b2b.harting.com/09140012762">https://b2b.harting.com/09140012762</a>

### Identification

Category	Modules
Series	Han-Modular®
Type of module	Han® 200 A module

### Version

Termination method	Axial screw termination
Gender	Female
Number of contacts	1

### Technical characteristics

Conductor cross-section	40 ... 70 mm <sup>2</sup>
Electrical data acc. to IEC 61984	200 A 1,000 V 8 kV 3
Rated current	200 A
Rated voltage	1,000 V
Rated impulse voltage	8 kV
Pollution degree	3
Rated voltage acc. to UL	600 V
Insulation resistance	≥10 <sup>10</sup> Ω
Contact resistance	≤0.2 mΩ
Limiting temperature	-40 ... +125 °C
Stripping length	16 mm
Tightening torque	9 ... 10 Nm
Mating cycles	≥500

### Material properties

Material (insert)	Polycarbonate
Colour (insert)	RAL 7032 (pebble grey)
Material (contacts)	Copper alloy



Pushing Performance

## Material properties

Surface (contacts)	Silver plated
Material flammability class acc. to UL 94	V-0
RoHS	compliant with exemption
RoHS exemptions	6a: Lead as an alloying element in steel for machining purposes and in galvanised steel containing up to 0,35 % lead by weight 6c: Copper alloy containing up to 4 % lead by weight
ELV status	compliant with exemption
China RoHS	50
REACH Annex XVII substances	No
REACH ANNEX XIV substances	No
REACH SVHC substances	Yes
REACH SVHC substances	Lead

## Specifications and approvals

Specifications	EN 60664-1 IEC 61984
Approvals	DNV GL
UL / CSA	UL 1977 ECBT2.E235076 UL 2237 PVVA2.E318390 CSA-C22.2 No. 182.3 PVVA8.E318390

## Commercial data

Packaging size	1
Net weight	61.1 g
Country of origin	Germany
Customs tariff number	85389099