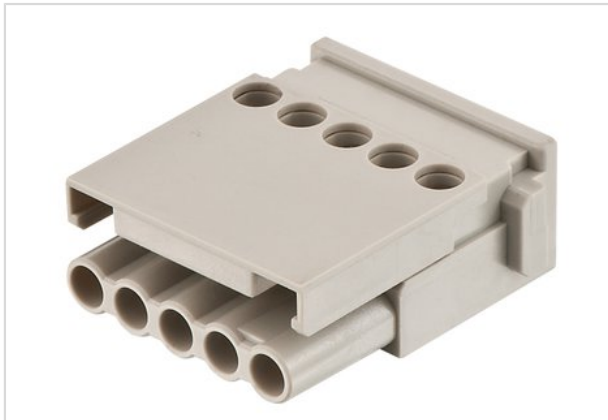


## Han E Screw module-F



|                    |   |
|--------------------|---|
| Part number        | 09 14 005 2701  |
| Specification      | Han E Screw module-F  |
| HARTING eCatalogue | <a href="https://b2b.harting.com/09140052701">https://b2b.harting.com/09140052701</a> |

### Identification

|                |               |
|----------------|---------------|
| Category       | Modules       |
| Series         | Han-Modular®  |
| Type of module | Han E® module |

### Version

|                    |                   |
|--------------------|-------------------|
| Termination method | Screw termination |
| Gender             | Female            |
| Number of contacts | 5                 |

### Technical characteristics

|                                   |                             |
|-----------------------------------|-----------------------------|
| Conductor cross-section           | 0.5 ... 2.5 mm <sup>2</sup> |
| Electrical data acc. to IEC 61984 | 16 A 230/400 V 4 kV 3       |
| Rated current                     | 16 A                        |
| Rated voltage conductor-earth     | 230 V                       |
| Rated voltage conductor-conductor | 400 V                       |
| Rated impulse voltage             | 4 kV                        |
| Pollution degree                  | 3                           |
| Insulation resistance             | ≥10 <sup>10</sup> Ω         |
| Contact resistance                | ≤1 mΩ                       |
| Limiting temperature              | -40 ... +125 °C             |
| Stripping length                  | 7.5 mm                      |
| Mating cycles                     | ≥500                        |

### Material properties

|                     |                        |
|---------------------|------------------------|
| Material (insert)   | Polycarbonate          |
| Colour (insert)     | RAL 7032 (pebble grey) |
| Material (contacts) | Copper alloy           |
| Surface (contacts)  | Silver plated          |



Pushing Performance

## Material properties

|   |  |
|---|--|
| Material flammability class acc. to UL 94 | V-0  |
| RoHS                                      | compliant with exemption                             |
| RoHS exemptions                           | 6c: Copper alloy containing up to 4 % lead by weight |
| ELV status                                | compliant with exemption                             |
| China RoHS                                | 50   |
| REACH Annex XVII substances               | No   |
| REACH ANNEX XIV substances                | No   |
| REACH SVHC substances                     | Yes  |
| REACH SVHC substances                     | Lead   |

## Specifications and approvals

|                |   |
|----------------|---|
| Specifications | EN 60664-1<br>IEC 61984   |
| Approvals      | DNV GL  |
| UL / CSA       | UL 1977 ECBT2.E235076<br>UL 2237 PVVA2.E318390<br>CSA-C22.2 No. 182.3 PVVA8.E318390 |

## Commercial data

|                       |          |
|-----------------------|----------|
| Packaging size        | 2        |
| Net weight            | 21.46 g  |
| Country of origin     | Germany  |
| Customs tariff number | 85366990 |