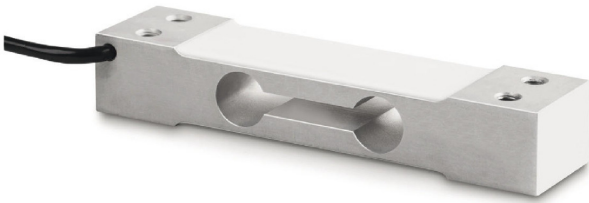


KERN CP40-3P1

Single-point load cells made of anodised aluminium



Measuring system

Combined Error:	0,023 %
Load cell connection:	4-Leiter
Nominal sensitivity:	2
OIML class:	C3
Resolution Load cell â Verifiable:	3000 e
Weighing capacity [Max]:	40 kg
Y value:	10000

Environmental conditions

Maximum operating temperature:	65 °C
Maximum operating temperature:	40 °C
Minimum ambient temperature:	-35 °C
Minimum operating temperature:	-10 °C

Category

Brand:	Sauter
--------	--------

Packaging & shipping

Delivery:	24 h
Dimensions packaging (WxDxH):	165 x 100 x 45 mm
Gross weight:	229 g
Net weight:	187 g
Shipping method:	Parcel service

Construction

Cable length:	40 cm
Dimensions (WxDxH):	130 x 30 x 22 mm
Dimensions of weighing plate (WxDxH):	250 x 350 x 0 mm