



**Sauter GmbH**

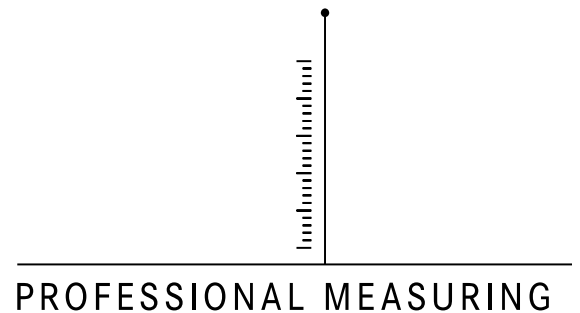
Ziegelei 1  
D-72336 Balingen  
E-Mail: [info@kern-sohn.com](mailto:info@kern-sohn.com)

Tel.: +49-[0]7433- 9933-0  
Fax: +49-[0]7433-9933-149  
Internet: [www.sauter.eu](http://www.sauter.eu)

# Instruction Manual / Data sheet

## CT P1 / CT P2

V. 1.0  
12/2018  
GB



**CT P1 / CT P2 -BA-e-1810**



# SAUTER CT P1 / CT P2

V. 1.0 12/2018

## Instruction Manual / Data sheet

---

---

Summarize:

<b>1</b>	<b>Short description .....</b>	<b>3</b>
<b>2</b>	<b>Available models.....</b>	<b>3</b>
<b>2.1</b>	<b>Models CT P1 .....</b>	<b>3</b>
<b>2.2</b>	<b>Models CT P2 .....</b>	<b>3</b>
<b>3</b>	<b>Introduction .....</b>	<b>3</b>
<b>4</b>	<b>Warning notes .....</b>	<b>3</b>
<b>5</b>	<b>Warranty .....</b>	<b>4</b>
<b>6</b>	<b>Detailed specifications .....</b>	<b>4</b>
<b>7</b>	<b>Wiring.....</b>	<b>5</b>
<b>7.1</b>	<b>4-wire diagram .....</b>	<b>5</b>
<b>7.2</b>	<b>6-wire diagram (option on request) .....</b>	<b>5</b>
<b>8</b>	<b>Dimensions in mm .....</b>	<b>5</b>
<b>9</b>	<b>Certificate of Compliance.....</b>	<b>6</b>

## 1 Short description

- Stainless steel IP67 (acc. to EN 60529) shear beam load cell
- Suitable platform, hopper, bed and other weighing
- adhesive sealed
- Accuracy OIML R60 C3
- OIML certificated
- RoHS conform
- Option on request: EX, Accuracy C4 / C5, 6 Conductor cable

## 2 Available models

### 2.1 Models CT P1

Capacity	Model
500kg	CT 500-3P1
1000kg	CT 1000-3P1
1500kg	CT 1500-3P1
2500kg	CT 2500-3P1
3000kg	CT 3000-3P1
5000kg	CT 5000-3P1
10000kg	CT 10000-3P1

### 2.2 Models CT P2

with adjusted characteristic value (when ordering more than one cell, this saves time by reducing the effort required for corner adjustment)

Capacity	Model
500kg	CT 500-3P2
1000kg	CT 1000-3P2
3000kg	CT 3000-3P2
5000kg	CT 5000-3P2
10000kg	CT 10000-3P2

## 3 Introduction

Please pay attention to the notes of the operating manual: read these operating manual carefully before commissioning, even if you already have experience with SAUTER measuring cells.

After receiving the measuring cell, it should be checked in advance whether no transport damage has occurred, whether the outer packaging or other parts or even the article itself has been damaged. If any damage is evident, please inform SAUTER GmbH immediately.

## 4 Warning notes

Observe the national accident prevention regulations.

Not correct executed use of the measuring cell can lead to serious injuries, death, material damage and personal injuries. Use only by trained and experienced people. Never load more than the max. capacity to a measuring cell. Overloaded measuring cells no longer have the required accuracy. Overloaded or deformed measuring cells are no longer allowed to use and must be changed quickly.

Never step under suspended loads.  
 Always fasten overload- or break security to your construction.  
 Pay attention to the allowed static and dynamic loads of the used equipment.  
 Let the measuring cells calibrate at regular intervals.  
 Only load the measuring cell in its specified load direction. Avoid lateral forces.  
 Control the measuring cells to deformations and cracks.  
 Measuring cells with 4-Conductor cable will change their characteristic value when shortened or extended the cable length.

## 5 Warranty

The warranty expires at:

- Disregard of the specifications of the operating manual
- Modification or opening the measuring cell
- Overload
- Mechanical damages
- Damage caused by liquids or media
- Natural loss
- Not correct installation

## 6 Detailed specifications

Output sensitivity ( FS )	mV/V	3.0 ± 0.003		
Maximum capacity ( E <sub>max</sub> )	kg	500, 1000, 1500, 2500, 3000, 5000, 10000		
Max.number of load cell	n <sub>LC</sub>	3000		
Ratio of min. LC verification interval	$Y = E_{\max} / V_{\min}$	10000		
Combined Error	%FS	≤± 0.023		
Minimum dead load	Of E <sub>max</sub>	0%		
Safe overload	of E <sub>max</sub>	150 %		
Ultimate overload	of E <sub>max</sub>	300 %		
Zero balance	of FS	< ± 1.0 %		
Excitation, recommended voltage	V	5 ~ 12		
Excitation maximum	V	18		
Input resistance	Ω	350 ± 3.5		
Output resistance	Ω	350 ± 3.5		
Insulation resistance	MΩ	≥5000 ( at 50VDC )		
Compensated temperature	°C	-10 ~+40		
Operating temperature	°C	-35 ~ +65		
Storage temperature	°C	-40 ~ +80		
Recommended torque on fixation bolts	Nm	M12: 75	M18:500	M24:750

## 7 Wiring

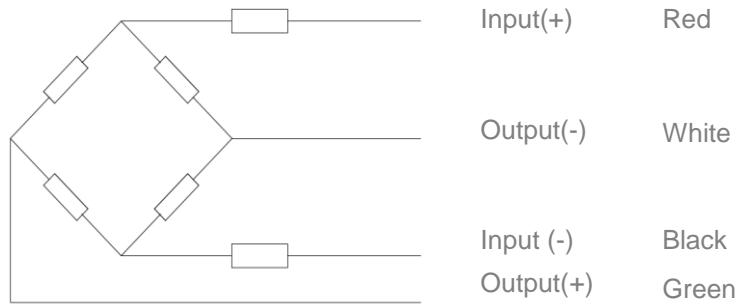
Shielded, 4 cable. Shield not connected to element.

Cable diameter:  $\varnothing 5\text{mm}$ .

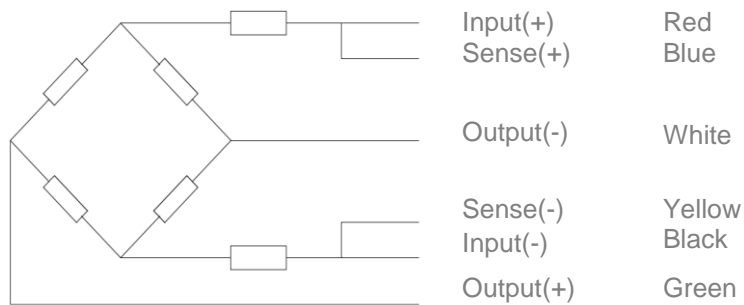
Standard cable length for 500kg – 1000kg: 4m

Standard cable length for 1500kg – 10000kg: 6m

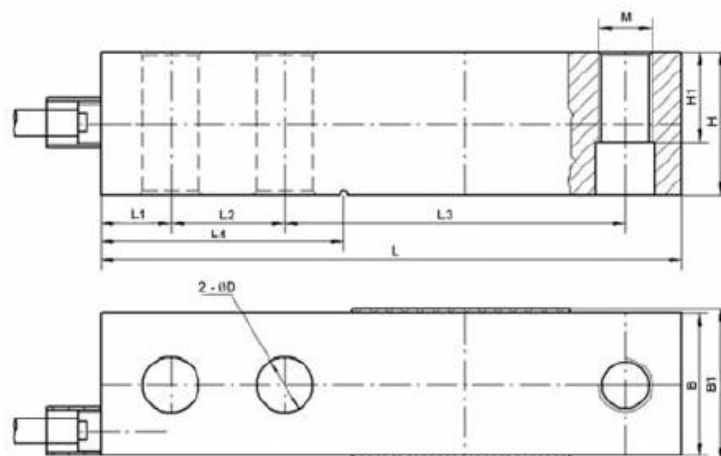
### 7.1 4-wire diagram



### 7.2 6-wire diagram (option on request)



## 8 Dimensions in mm



Dimension Capacity	L	L1	L2	L3	L4	B	B1	H	H1	H2	H3	H4	$\varnothing D$	M
--------------------	---	----	----	----	----	---	----	---	----	----	----	----	-----------------	---

500kg – 1500kg	130	15.8	25.4	76.2	54.2	31.8	34	31.8	15.8	14.5	15.8	4.8	13.5	M 12 x 1.75
2500kg – 5000kg	171.5	19.1	38.1	95.3	77.2	38.1	40	38.1	18.8	17.5	18.8	4.8	19.8	M 18 x 1.5
10000kg	222.3	25.4	50.8	120.7	101.6	50.8	52.4	50.8	25.4	-	-	-	26	M 24 x 2

## 9 Certificate of Compliance

The Certificate of Compliance can be downloaded from the website [www.sauter.eu](http://www.sauter.eu)