

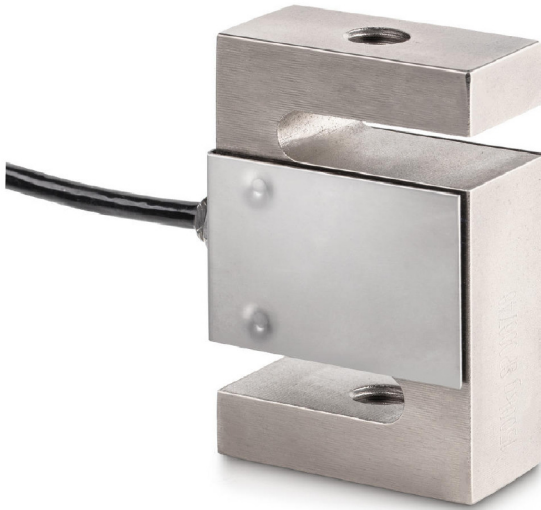
# KERN CS25-3P1

4 wire 4-wire measuring cells for force and mass measurement

**KERN**<sup>®</sup>

## Piktogramme

STANDARD



### Measuring system

Combined Error:	0,020 %
Load cell connection:	4-Leiter
Nominal sensitivity:	2
Resolution Load cell à Verifiable:	3000 e
Weighing capacity [Max]:	25 kg
Y value:	10000

### Environmental conditions

Maximum operating temperature:	65 °C
Maximum operating temperature:	40 °C
Minimum ambient temperature:	-35 °C
Minimum operating temperature:	-10 °C

### Category

Brand:	Sauter
--------	--------

### Packaging & shipping

Delivery:	24 h
Dimensions packaging (WxDxH):	185 x 155 x 60 mm
Gross weight:	474 g
Net weight:	375 g
Shipping method:	Parcel service

### Construction

Cable length:	3 m
Dimensions (WxDxH):	50,8 x 76,2 x 14,5 mm