

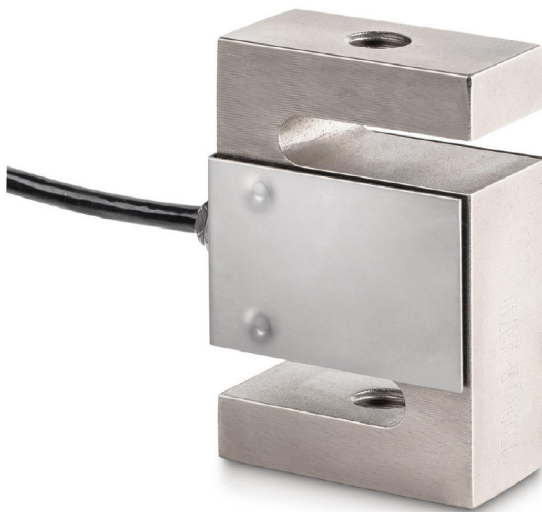
# KERN CS2500-3P1

4 wire  measuring cells for force and mass measurement



## Piktogramme

STANDARD



### Measuring system

Combined Error:	0,020 %
Load cell connection:	4-Leiter
Nominal sensitivity:	2
OIML class:	C3
Resolution Load cell  Verifiable:	3000 e
Weighing capacity [Max]:	2,500 t
Y value:	10000

### Environmental conditions

Maximum operating temperature:	65 C
Maximum operating temperature:	40 C
Minimum ambient temperature:	-35 C
Minimum operating temperature:	-10 C

### Category

Brand:	Sauter
--------	--------

### Packaging & shipping

Delivery:	24 h
Dimensions packaging (WxDxH):	205 x 170 x 60 mm
Gross weight:	1,399 kg
Net weight:	1,292 kg
Shipping method:	Parcel service

### Construction

Cable length:	6 m
Dimensions (WxDxH):	76,2 x 101,6 x 27,2 mm