

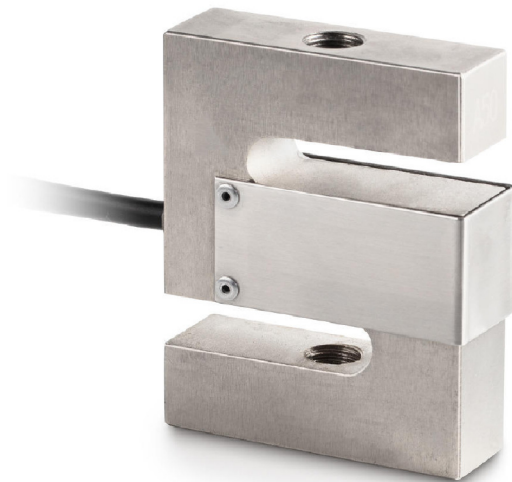
KERN CS3000-3Q1

6 wire 6-wire measuring cells for force and mass measurement

KERN[®]

Piktogramme

STANDARD



Measuring system

| | |
|------------------------------------|----------|
| Combined Error: | 0,017 % |
| Load cell connection: | 6-Leiter |
| Nominal sensitivity: | 2 |
| Resolution Load cell â Verifiable: | 3000 e |
| Weighing capacity [Max]: | 3 t |
| Y value: | 10000 |

Environmental conditions

| | |
|--------------------------------|--------|
| Maximum operating temperature: | 40 °C |
| Minimum ambient temperature: | -10 °C |

Category

| | |
|--------|--------|
| Brand: | Sauter |
|--------|--------|

Packaging & shipping

| | |
|-------------------------------|--------------------|
| Delivery: | 24 h |
| Dimensions packaging (WxDxH): | 220 x 135 x 100 mm |
| Gross weight: | 3,471 kg |
| Net weight: | 3,300 kg |
| Shipping method: | Parcel service |

Construction

| | |
|---------------------|-------------------|
| Cable length: | 5 m |
| Dimensions (WxDxH): | 120 x 100 x 45 mm |