

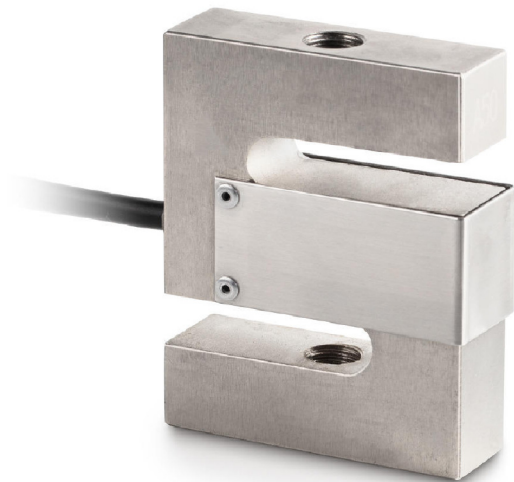
KERN CS200-3Q1

6 wire 6-wire measuring cells for force and mass measurement

KERN[®]

Piktogramme

STANDARD



Measuring system

Combined Error:	0,017 %
Load cell connection:	6-Leiter
Nominal sensitivity:	2
Resolution Load cell 6-Verifiable:	3000 e
Weighing capacity [Max]:	200 kg
Y value:	10000

Environmental conditions

Maximum operating temperature:	40 °C
Minimum ambient temperature:	-10 °C

Category

Brand:	Sauter
--------	--------

Packaging & shipping

Delivery:	24 h
Dimensions packaging (WxDxH):	250 x 155 x 60 mm
Gross weight:	899 g
Net weight:	780 g
Shipping method:	Parcel service

Construction

Cable length:	5 m
Dimensions (WxDxH):	80 x 62,1 x 19 mm