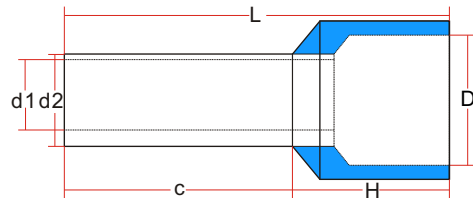


# Data Sheet

## Insulated Cable Ferrules Set (DIN 46228)



Insulator material: PVC  
Terminal material: Tinned Copper  
Working Temperature: 75°C max.  
Rating voltage: 600 V/AC max.



Type	Dimension(mm)						Wire range	Color	Contents
	H	c	L	ød1	ød2	øD			
T1904C124	6.0	8.0	14.0	1.0	1.3	2.6	0.5 mm <sup>2</sup>	White	100pcs
T1904C052	6.0	8.0	14.0	1.2	1.5	2.8	0.75 mm <sup>2</sup>	Grey	100pcs
T1904C053	6.0	8.0	14.0	1.4	1.7	3.0	1.0 mm <sup>2</sup>	Red	100pcs
T1904C054	6.0	8.0	14.0	1.7	2.0	3.5	1.5 mm <sup>2</sup>	Black	100pcs
T1904C055	6.0	8.0	14.0	2.2	2.6	4.2	2.5 mm <sup>2</sup>	Blue	100pcs
T1904C056	9.0	10.0	19.0	2.8	3.2	4.8	4.0 mm <sup>2</sup>	Grey	50pcs
T1904C057	8.0	12.0	20.0	3.5	3.9	6.3	6.0 mm <sup>2</sup>	Yellow	25pcs
T1904C058	10.0	12.0	22.0	4.5	4.9	7.6	10.0 mm <sup>2</sup>	Red	25pcs